



**Gwendolen Avenue, SW15**

**£425,000**

**Dexters**



## Gwendolen Avenue, SW15

A bright and spacious triple aspect one bedroom flat taking up the whole top floor of this beautiful Edwardian Building. Situated on Gwendolen Avenue, one of Putney's most stunning streets, this unique flat comprises a large west facing lounge with high ceilings and dining area, a separate kitchen with study area perfect for home working, a spacious East facing double bedroom with built in wardrobes, plentiful storage and a large communal garden perfect for enjoying sunny days at home.

Gwendolen Avenue is a peaceful, tree lined street of detached Edwardian Homes. No 16 is one of only two houses converted into flats and is steps away from everything you could need, from unique independent restaurants, cafes & delis to supermarkets, gyms & yoga studios. Being a short walk from both Putney mainline & East Putney Tube, this flat is perfect for commuting to Central London and being close to Putney Bridge, Fulham & the riverside walk, this charming flat offers an idyllic Putney lifestyle.

### Features

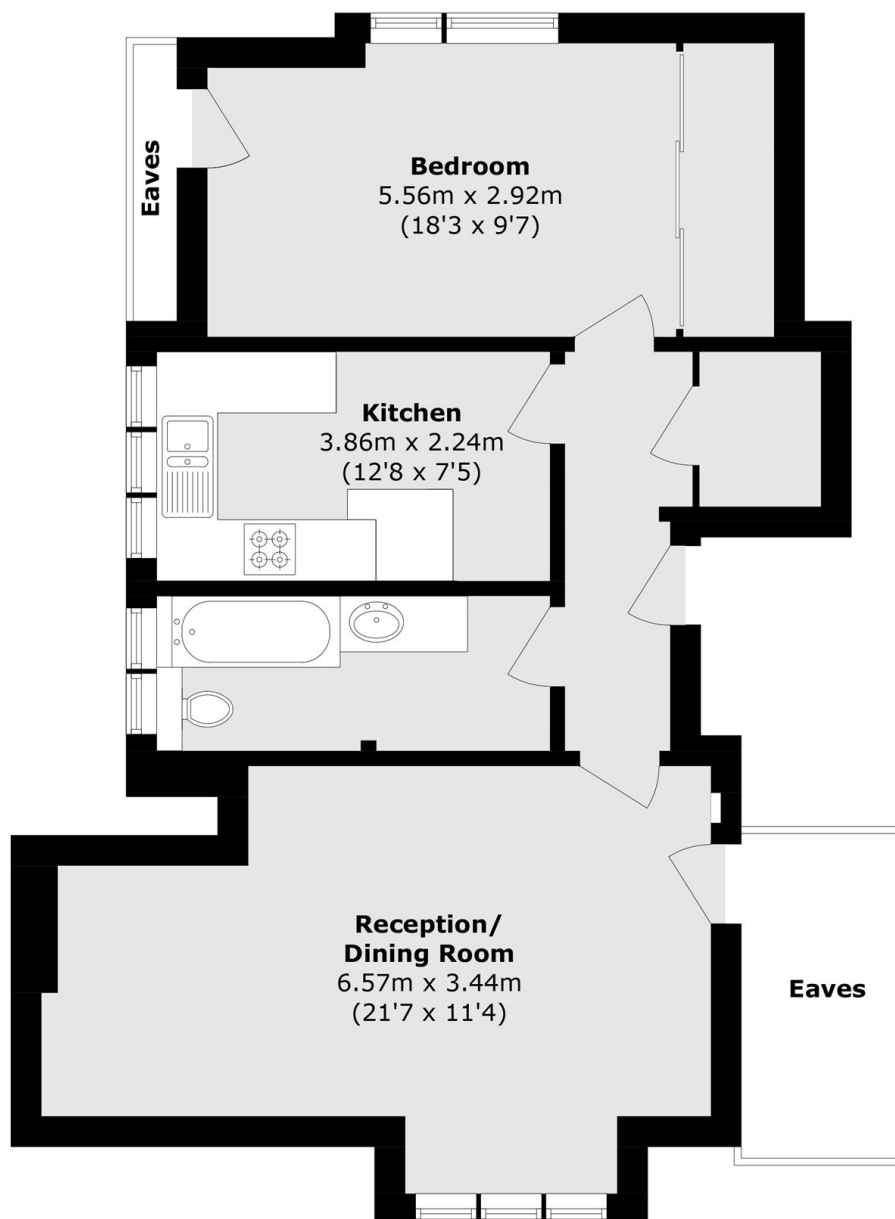
- One Bedroom
- 660 Sq. Ft
- Shared Private Off Street Parking
- Chain Free
- Share Of Freehold







# Gwendolen Avenue, London, SW15



Total area (approx.): 61.3 sq. m (659.8 sq. ft)  
(Excluding Eaves)