



**5 ELM ROAD
CHESSINGTON
KT9 1AF
OFFERS IN EXCESS OF
£475,000**

SEMI DETACHED HOUSE

THREE BEDROOMS

12' X 11'11 LIVING ROOM

17'10 X 11'1 KITCHEN DINING ROOM

DOUBLE GLAZED WINDOWS

GAS CENTRAL HEATING

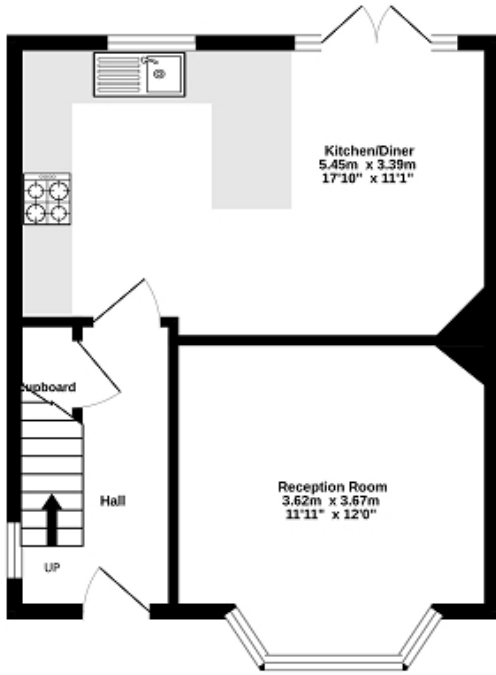
29' X 25' REAR GARDEN

OFF STREET PARKING

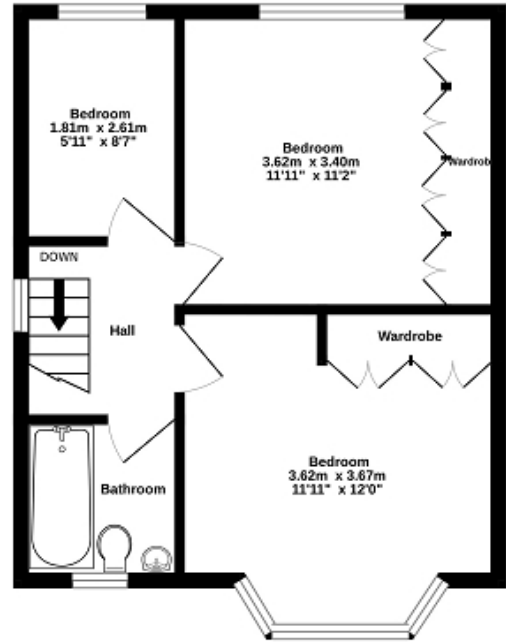
AN IDEAL FIRST TIME BUY OR FAMILY HOME

NO FORWARD CHAIN

Ground Floor
38.5 sq.m. (414 sq.ft.) approx.



1st Floor
38.5 sq.m. (414 sq.ft.) approx.



TOTAL FLOOR AREA : 77.0 sq.m. (829 sq.ft.) approx.

Whilst every attempt has been made to ensure the accuracy of the floorplan contained here, measurements of doors, windows, rooms and any other items are approximate and no responsibility is taken for any error, omission or mis-statement. This plan is for illustrative purposes only and should be used as such by any prospective purchaser. The services, systems and appliances shown have not been tested and no guarantee as to their operability or efficiency can be given.
Made with Metropix ©2026

