



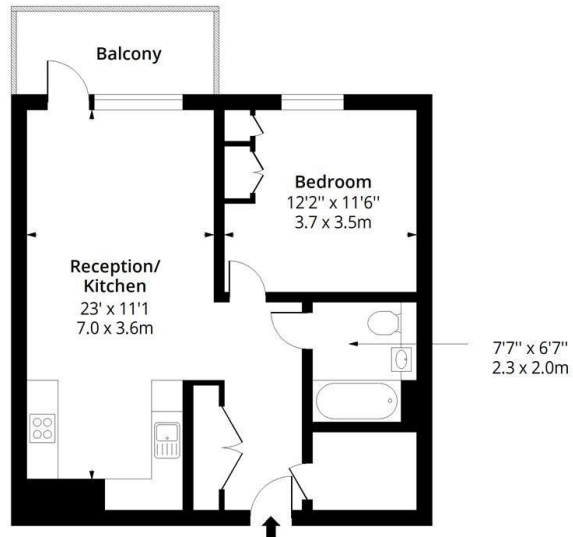
## 606, Burrell House Langham Grove, Thamesmead, SE28 0FX

£1,650 Per month

- 24/7 Concierge service
- Spacious double bedroom with built-in storage
- Excellent transport links via Plumstead & Woolwich stations
- Bright open-plan living, kitchen and dining area
- Furnished
- Access to residents gym
- Brand new one-bedroom apartment
- Landscaped shared gardens

## Burrell House SE28

Approx. Gross Internal Area 612 Sq Ft - 56.85 Sq M  
 Approx. Gross Balcony Area 62 Sq Ft - 5.76 Sq M



### Sixth Floor

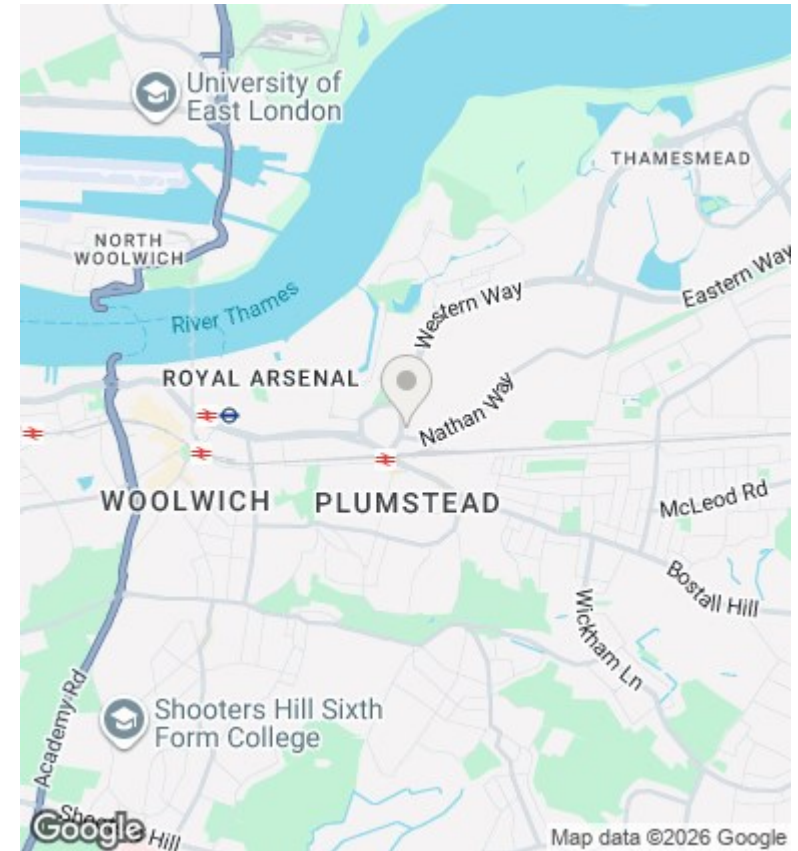
Floor Area 612 Sq Ft - 56.85 Sq M



Measured according to RICS IPMS2. Floor plan is for illustrative purposes only and is not to scale. Every attempt has been made to ensure the accuracy of the floor plan shown, however all measurements, fixtures, fittings and data shown are an approximate interpretation for illustrative purposes only. 1 sq m = 10.76 sq feet.

lpaplus.com

Date: 11/2/2026



## Directions

## Viewings

Viewings by arrangement only. Call 0208 075 4927 to make an appointment.

## Council Tax Band

New Build

## EPC Rating:

B

Energy Efficiency Rating		Current	Potential
<i>Very energy efficient - lower running costs</i>			
(92 plus) <b>A</b>			
(81-91) <b>B</b>		85	85
(69-80) <b>C</b>			
(55-68) <b>D</b>			
(39-54) <b>E</b>			
(21-38) <b>F</b>			
(1-20) <b>G</b>			
<i>Not energy efficient - higher running costs</i>			
<b>England &amp; Wales</b>		EU Directive 2002/91/EC	