

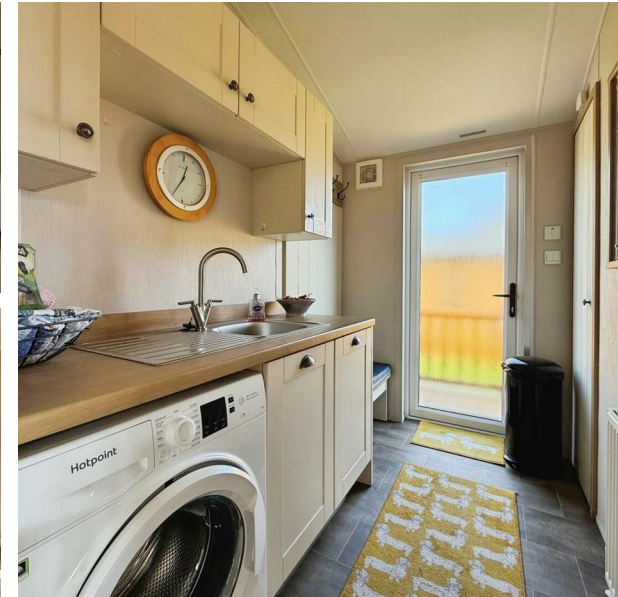
17 North, Roebeck Country Park Gatehouse Road, Ryde, PO33 4BP

£65,000

EPC Rating: Council Tax Band:

ELLIOTT  
LINCOLN  
ESTATE AGENTS & ASSOCIATES

Reassuringly familiar, refreshingly new



A stylish and beautifully positioned two-bedroom holiday home, enjoying a stunning countryside outlook from one of the higher points of the park, with wraparound decking, parking and bright, spacious accommodation throughout. Perfect for those seeking a relaxing Island retreat with 12-month holiday use in a peaceful yet well-connected setting.

**ELLIOTT  
LINCOLN**  
ESTATE AGENTS & ASSOCIATES

*Reassuringly familiar, refreshingly new*

Call or WhatsApp: 01983 642622  
office@elliottlincoln.co.uk  
www.elliottlincoln.co.uk

Energy Efficiency Rating		
	Current	Potential
Very energy efficient - lower running costs		
(92 plus) <b>A</b>		
(81-91) <b>B</b>		
(69-80) <b>C</b>		
(55-68) <b>D</b>		
(39-54) <b>E</b>		
(21-38) <b>F</b>		
(1-20) <b>G</b>		
Not energy efficient - higher running costs		
<b>England &amp; Wales</b>	EU Directive 2002/91/EC	