

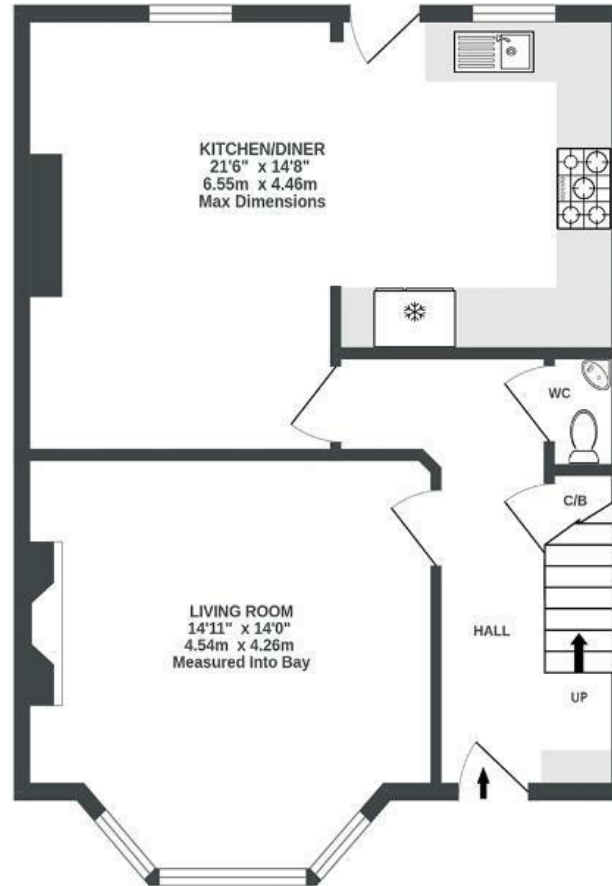
# Wick Crescent

## BRISLINGTON

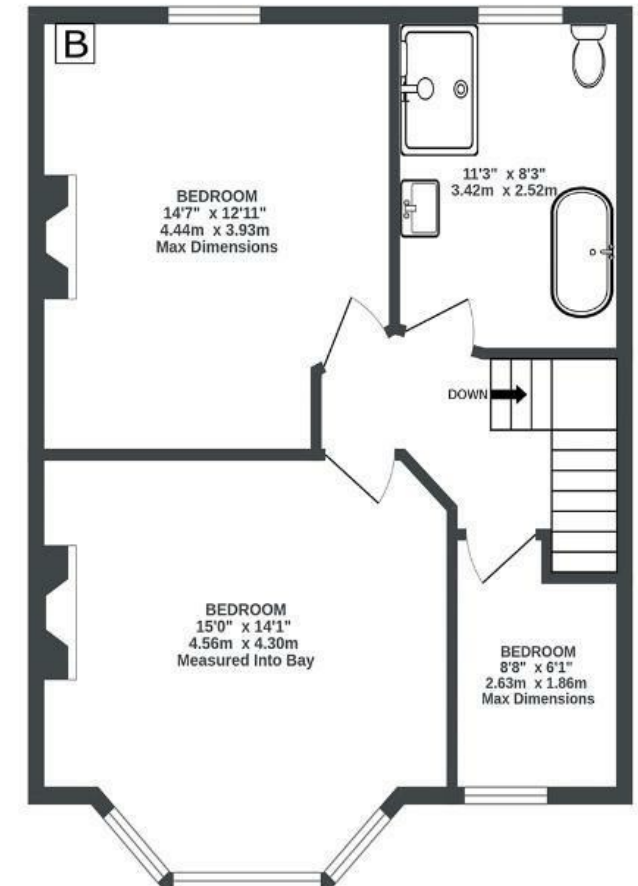
APPROXIMATE FLOOR AREA  
115 SQM / 1238 SQFT



GROUND FLOOR  
621 sq.ft. (57.7 sq.m.) approx.



1ST FLOOR  
617 sq.ft. (57.3 sq.m.) approx.



Boardwalk

# Wick Crescent , BRISTOL



£535,000



3 Bedrooms



BS4 4HG



1 Bathrooms

*"I've loved living in my home for the last 10 years, starting from renovating the house to it being a home to raise my family in. On a sunny day the light streams through into the kitchen and I love sitting out on the decking taking in the view. It's been great to be so close to the shops, deli and cafes on Sandy Park and the library across the road has been great with young children. The road is quiet and friendly away from the bustle of the busier local streets."*

