



OAKDEN STREET, SE11

£1,600,000

Freehold
Private walled garden
1,800+ sq ft of living space
Excellent transport links
Sought after residential street
Lots of natural light

@marshandparsons
marshandparsons.co.uk

MARSH &
PARSONS

ABOUT THE PROPERTY

Nestled on the highly sought after Oakden Street in the heart of Kennington, this attractive Victorian mid-terraced home offers an exceptional blend of period elegance and contemporary comfort. Arranged over four spacious floors and extending to over 1,800 sq ft, the property suits modern family living while carefully preserving its original character and architectural charm. The accommodation includes four generous double bedrooms, alongside a superb balance of formal and open plan living spaces. An elegant through reception room sits at upper ground level, while the enlarged kitchen and dining area are below, creating bright and versatile living areas filled with natural light.





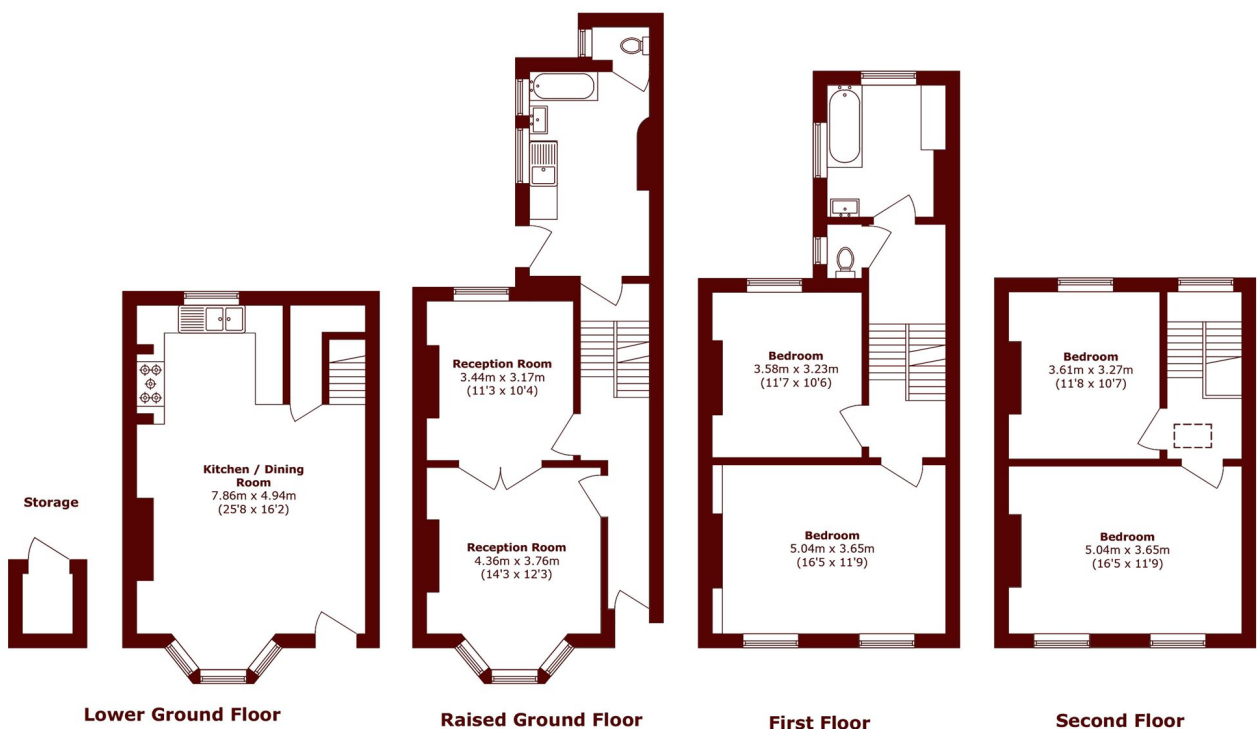


FURTHER DETAILS

The house has benefited from thoughtful improvements, including refurbished and replacement sash windows and significant double glazing upgrades, enhancing energy efficiency while preserving its Victorian charm. There remains scope for further enhancement. To the rear, a beautifully landscaped walled garden with York stone paving and mature planting offers a peaceful setting for entertaining, outdoor dining, and relaxed family living.



STEP INSIDE OAKDEN STREET



Total area (approx.): 171.4 sq. m (1844.9 sq. ft)
External Storage area (approx.): 1.4 sq. m (15.1 sq. ft)

Kennington
020 7587 1533

Energy Rating: E We aim to make our particulars both accurate and reliable. However, they are not guaranteed; nor do they form part of an offer or contract. If you require clarification on any points then please contact us, especially if you're traveling some distance to view. Please note that appliances and heating systems have not been tested and therefore no warranties can be given as to their good working order

**MARSH &
PARSONS**