

GATLIFF ROAD,
SW1W

£1,100,000

Leasehold



2



2



1



C

PROPERTY FEATURES

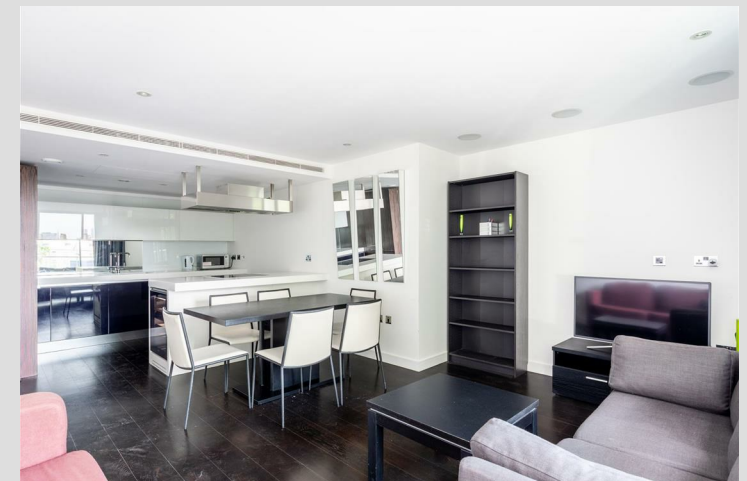
- Chelsea/Westminster Riverside
- Porter Service
- No Chain
- Battersea Park & Power Station
- Over 800sq feet & Private Location
- Parking

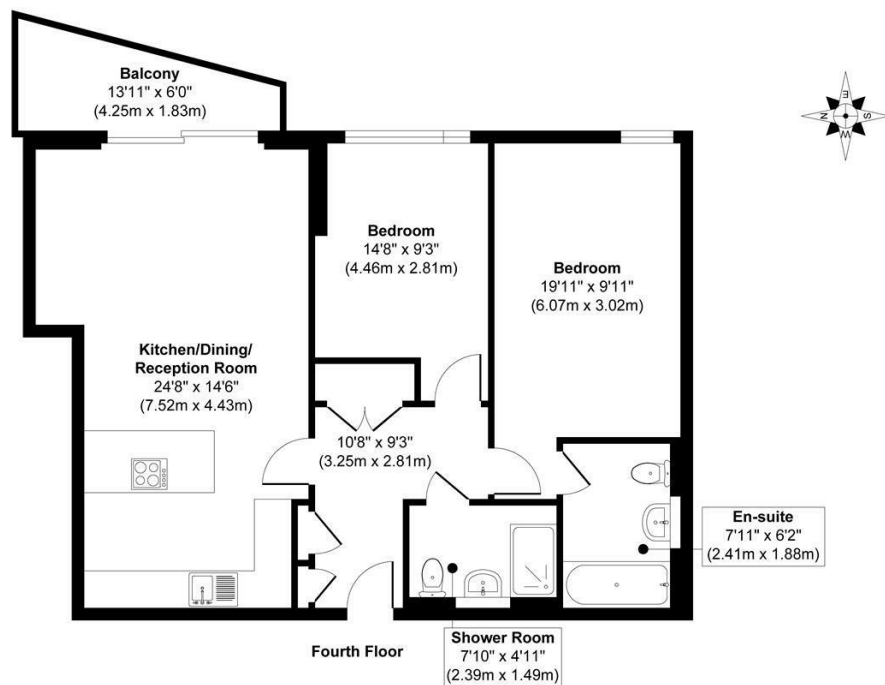


PROPERTY FEATURES

Overlooking the Grosvenor Canal, this delightful two-bedroom apartment offers modern living and convenience. Spanning an impressive 807 square feet, the property boasts a spacious open plan reception room that invites natural light, creating a warm and welcoming atmosphere.

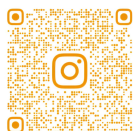
ALEXANDER STEER
Estate Agents





Approx. Gross Internal Floor Area 807 sq. ft / 75.04 sq. m

Illustration for identification purposes only, measurements are approximate, not to scale.
Produced by Elements Property



©ALEXANDERSTEERPROPERTY

**ALEXANDER
STEER**

0203 822 0111

hello@alexandersteer.co.uk

158a Shepherds Bush Road, Hammersmith, London,
W6 7PB



All sizes are approximate. The Agent has not tested any apparatus, equipment, fixtures and fittings, or services and so cannot verify that they are in working order or fit for the purpose. A buyer is advised to obtain verification from their Solicitors or Surveyor. Photographs are for illustration purposes only and may depict items, which are not for sale or included in the sale price. References to tenure of a property are based upon Information supplied by the vendor. The agent has not had sight of the title documents, a buyer is advised to obtain verification from their solicitor.

Money Laundering Regulations 2003: Intending purchasers will be asked to produce identification, documentation at a later stage and we would ask for your co-operation in order that there will be no delay in agreeing the sale. These particulars are intended to give a fair description of the property only and are in no way guaranteed, nor do of any contract. They are issued on the express condition that all negotiations are conducted through Alexander Steer Estate Agents. All subject to contract and to being unsold.