



Chestnut View, 7 Brows Lane, Liverpool, L37 3HY

£190,000

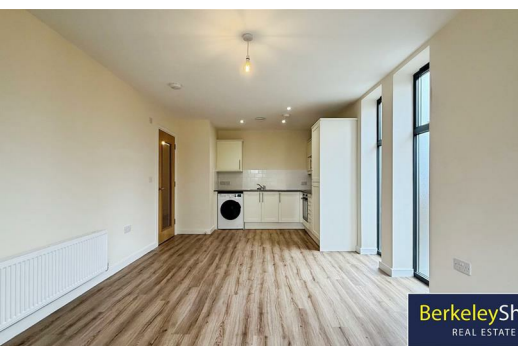
Well-Presented One Bedroom Ground Floor Apartment in the Heart of Formby

Located within the ever-popular Chestnut View development on Brows Lane, this attractive ground floor one-bedroom apartment offers comfortable, modern living in a highly sought-after setting. Presented in turnkey condition and benefiting from no onward chain, it provides an ideal opportunity for a straightforward and hassle-free purchase.

The apartment is accessed via a welcoming entrance hall, complete with a useful storage cupboard. The heart of the home is the impressive open-plan kitchen, dining, and living area—thoughtfully designed to maximise space and functionality, creating a bright and sociable environment ideal for both everyday living and entertaining. The contemporary fitted kitchen includes a range of integrated appliances, such as an electric hob, oven, and fridge freezer.

The well-proportioned bedroom is a calm and comfortable space, while a modern three-piece bathroom completes the internal accommodation.

Externally, the property benefits from resident parking, well-maintained communal gardens, and gas central heating, ensuring both comfort and convenience.



Externally

The development benefits from a secure entry system, resident parking, and well-maintained communal gardens, providing both convenience and a pleasant outdoor environment.

Communal hallway

Hallway

Entrance door, flooring, access to Meter Cupboard, Walk In Storage Cupboard, Radiator improve this for a room description for rightmove

Open Plan Kitchen/Lounge

Impressive open plan kitchen diner/living area ideal for both relaxing and entertaining, featuring double glazed windows that flood the room with natural light. The space benefits from fitted flooring and a radiator, and comprises a range of modern base and wall units with integrated appliances including a fridge/freezer, washer dryer, electric cooker and hob with extractor hood. There is also an inset sink with mixer tap and a gas combi boiler, completing this well-equipped and inviting area.

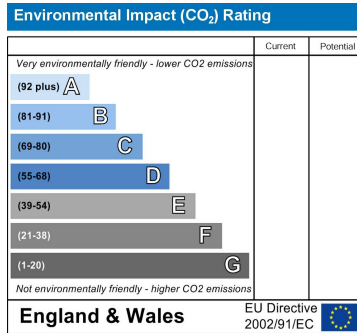
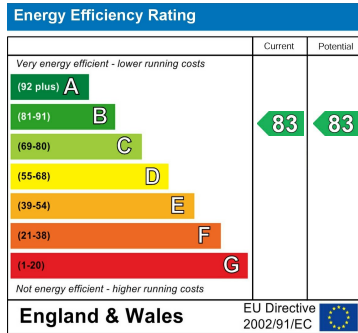
Bedroom 1

Generous double bedroom flooded with natural light via a double glazed window, creating a bright and inviting space. Finished with a radiator and neutral carpet, offering a comfortable and versatile setting.

Bathroom

Modern and stylish four-piece bathroom featuring a double glazed window, fitted flooring, and part tiled walls in all wet areas. The suite comprises a panelled bath, low level W.C., wash basin, alongside a separate walk-in shower with a sleek glazed enclosure, creating a bright and contemporary space.

GROUND FLOOR



Berkeley Shaw Estate Agents Limited.
Company No. 0784754

Berkeley Shaw Real Estate Limited.
Company No. 05206927

