



**WETHERELL**  
MAYFAIR'S FINEST PROPERTIES



## DERING STREET, W1S

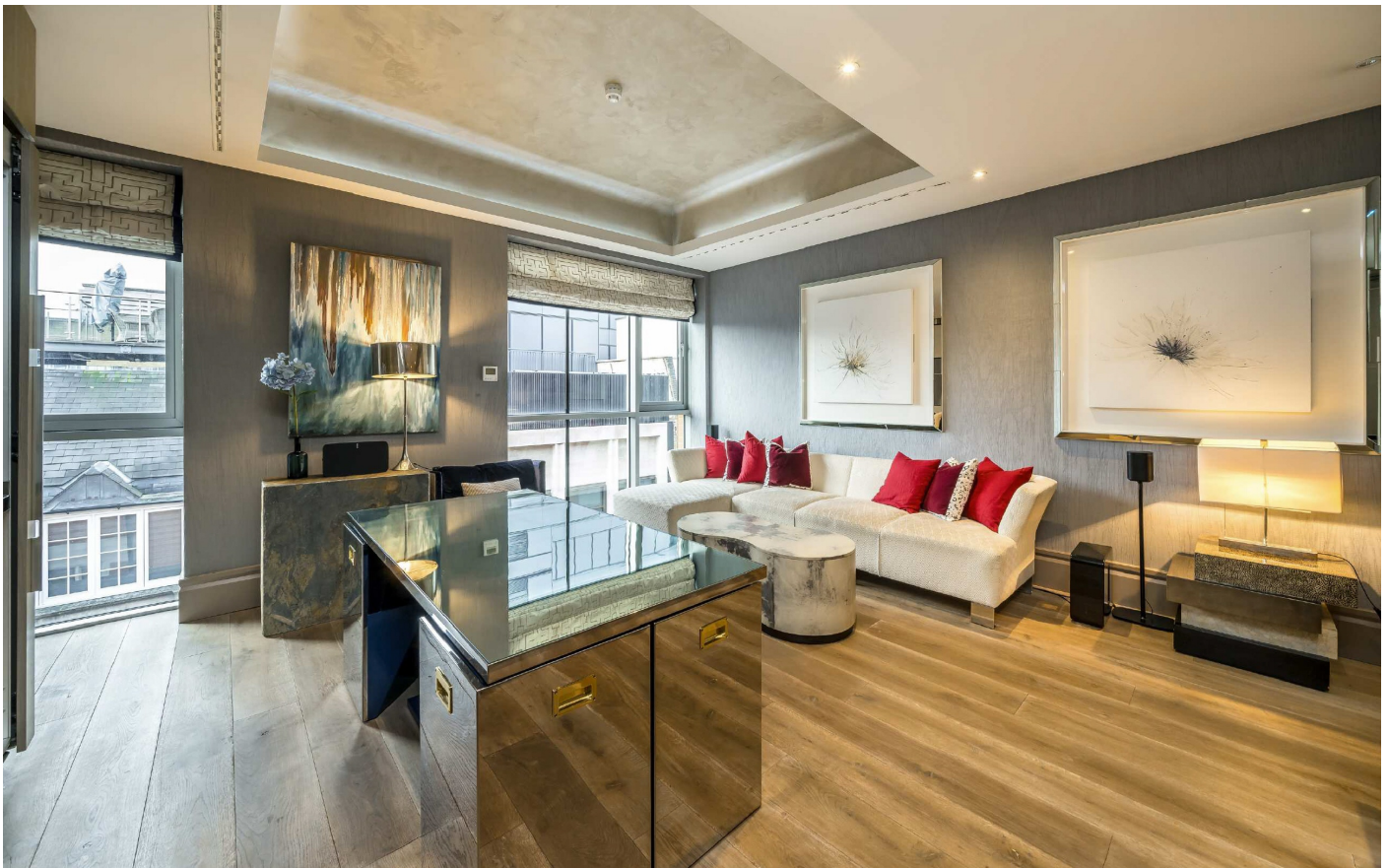
£1,000,000

A large (776sqft) studio apartment, within a modern portered building, with a lift and air conditioning, located less than a minutes walk from Bond Street Station.

A very well-proportioned apartment located on the third floor of this incredibly well-located building in Mayfair. The apartment is the same size as most generous one-bedroom apartments and benefits from a clearly segregated bedroom area to the living space and plenty of built in storage. The bathroom has a separate shower cubicle and bath and a double sink. This modern building further benefits from a concierge on the front desk and modern amenities including a lift and air conditioning.

Located in the heart of London, only moments away from Oxford Street and Regents Street and with some of the best transport links in London ( 0.2 miles) to Oxford Circus the apartment makes the perfect buy to let, pied a terre or anyone looking for a property located in the very heart of Mayfair/ London.

VERGE APARTMENTS IS EXTREMELY WELL LOCATED FOR BOND STREET STATION ON THE NEW ELIZABETH LINE WITH DIRECT TRAINS TO HEATHROW (C. 30 MINS).

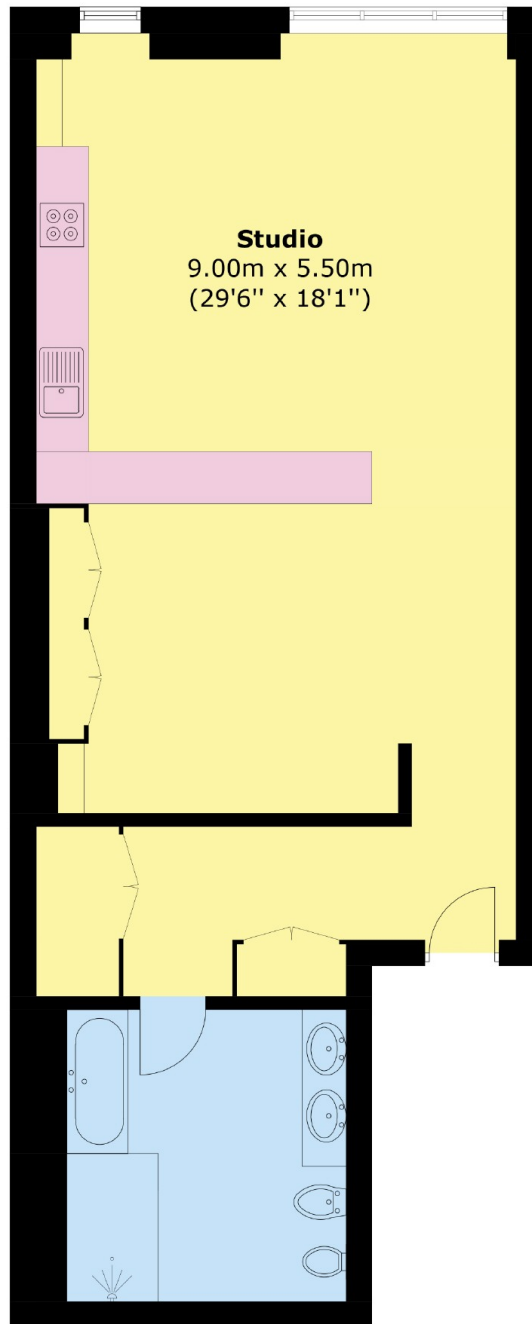


## FEATURES

- Large Studio c. 776 SqFt • Bond Street Station- 270 ft • Oxford Circus Station- 0.2 miles • Heathrow (c. 30 mins) • Porter • Lift • Air Conditioning •



# DERING STREET, LONDON, W1S



Area (approx.): 72.1 sq. m (776.0 sq. ft)