



172 Park Road, Bedworth
Bedworth

£130,000

172 Park Road

Bedworth, Bedworth

Duplex Apartment| Two Spacious Bedroom| No Onward Chain| Double Glazed Windows| Gas Central Heating| Off Road Parking| Close By To Transport Links & Bedworth Town| COUNCIL TAX BAND A & EPC RATING D

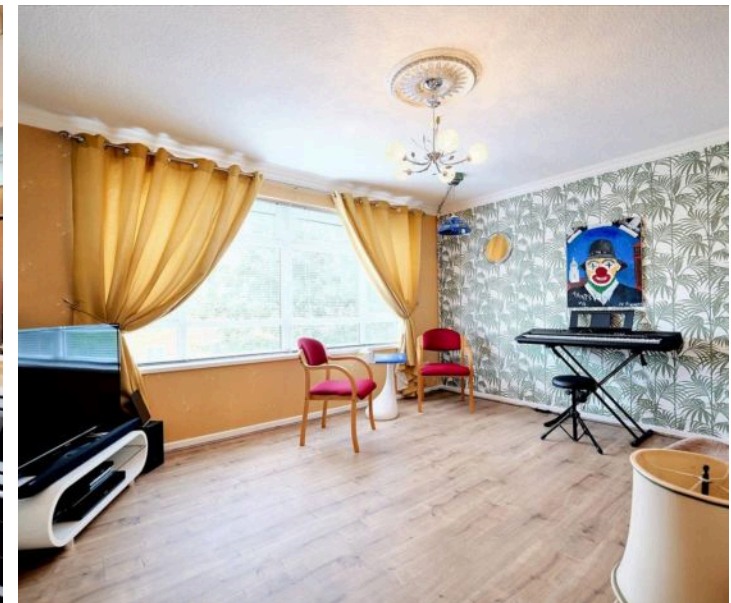
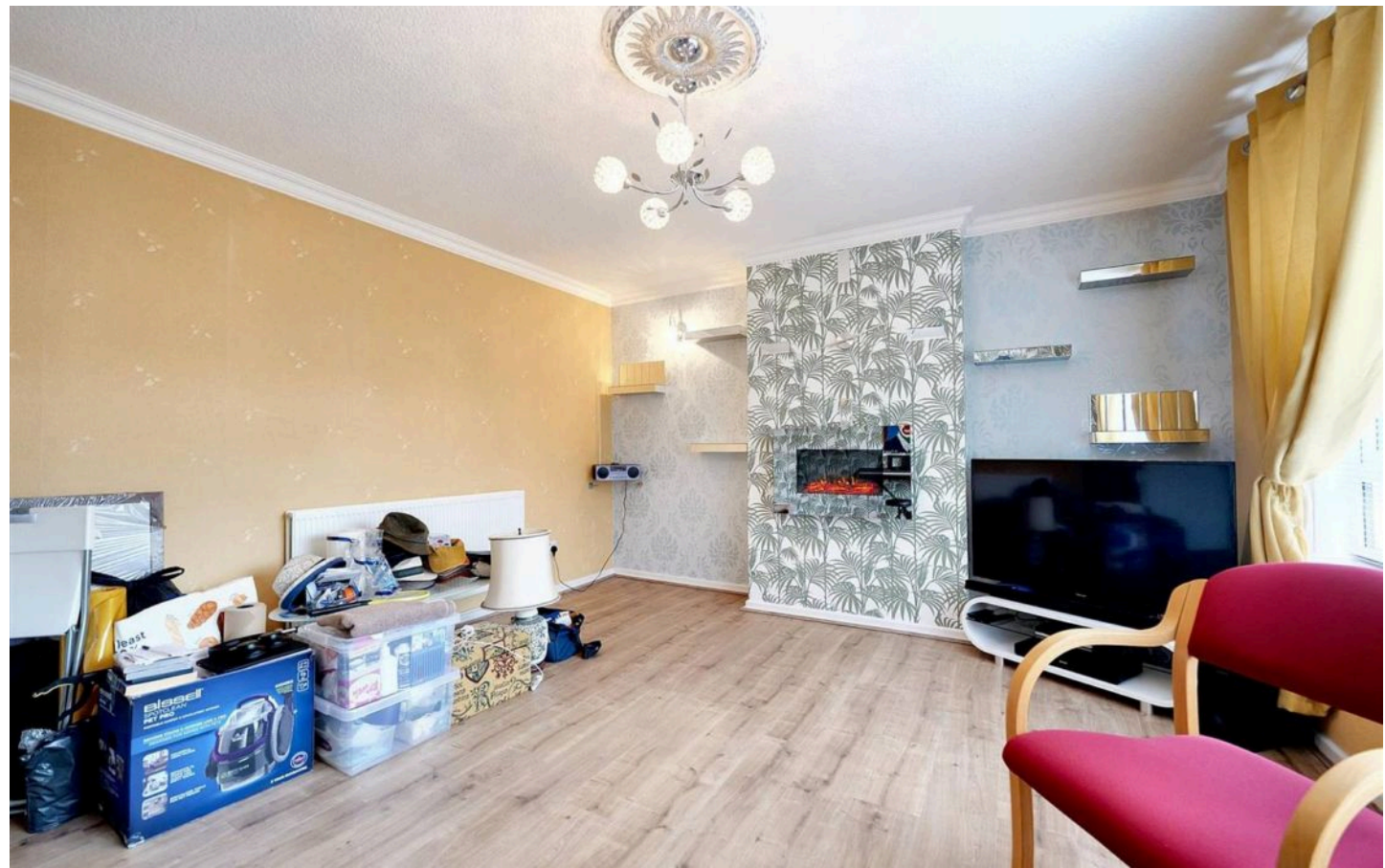
Council Tax band: A

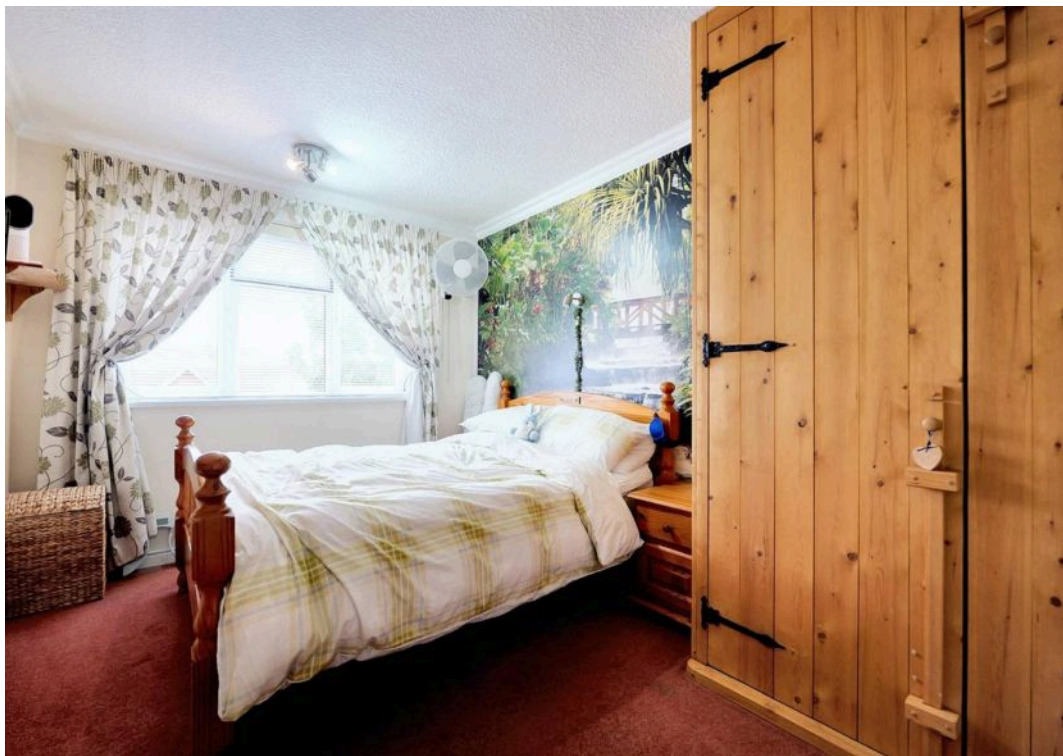
Tenure: Leasehold

EPC Energy Efficiency Rating: D

EPC Environmental Impact Rating: D

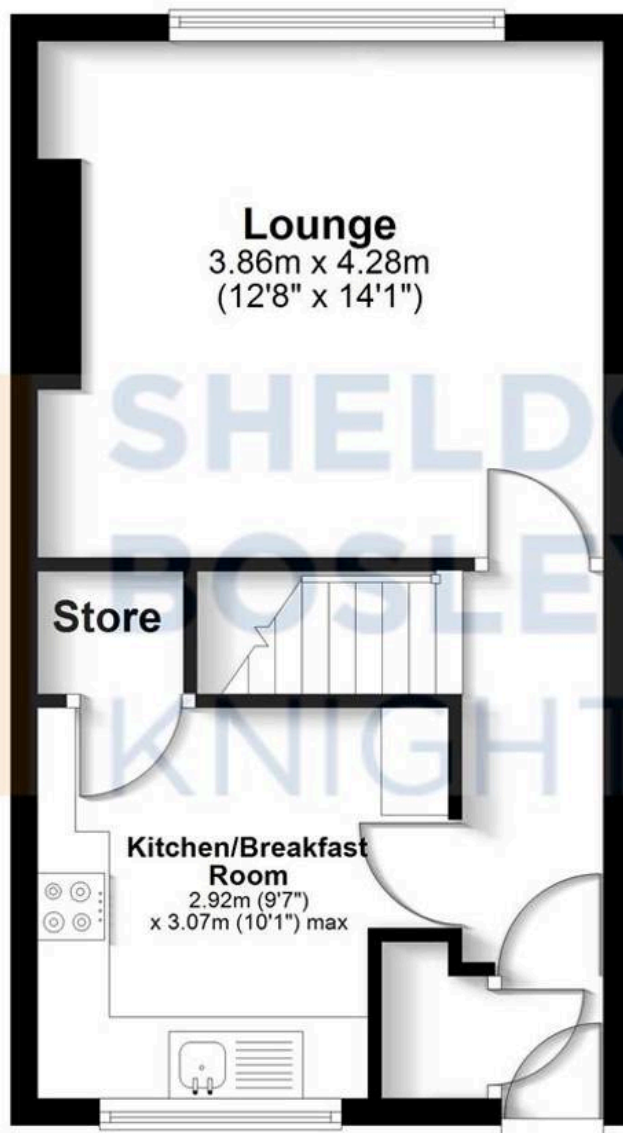
- Duplex Apartment
- Two Spacious Bedrooms
- No Onward Chain
- Double Glazed Windows
- Gas Central Heating
- Off Road Parking
- Close By To Transport Links & Bedworth Town
- COUNCIL TAX BAND A & EPC RATING D





First Floor

Approx. 33.6 sq. metres (361.7 sq. feet)



Second Floor

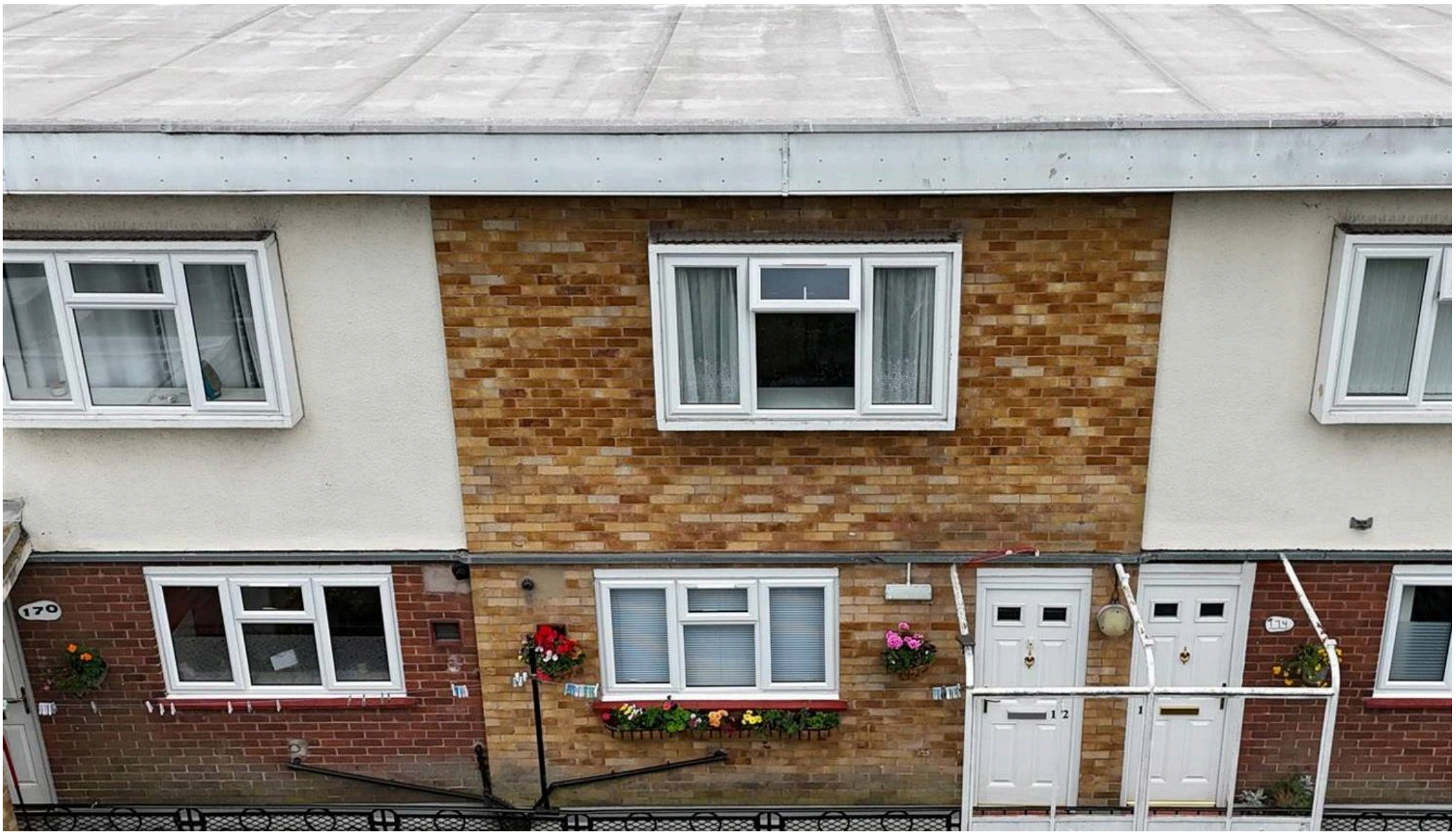
Approx. 33.3 sq. metres (358.4 sq. feet)



Total area: approx. 66.9 sq. metres (720.2 sq. feet)

All efforts have been made to ensure the measurements are accurate on this floor plan, however these are for guidance purposes only.

Plan produced using PlanUp.



Sheldon Bosley Knight Nuneaton

39 Newdegate Street - CV11 4ER

02476374949 • nuneaton@sheldonbosleyknight.co.uk • www.sheldonbosleyknight.co.uk/