



33 BELMONT AVENUE

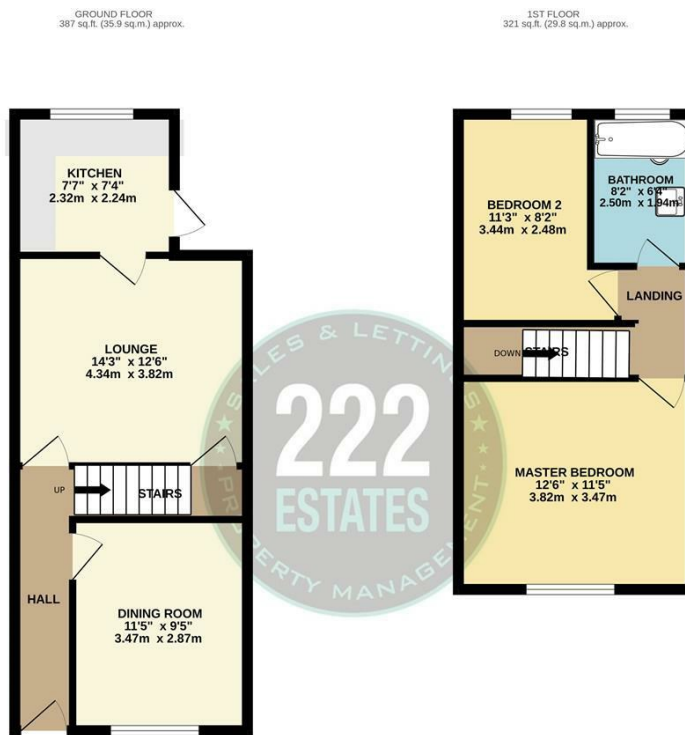
WARRINGTON, WA4 1LY

£155,000
FREEHOLD

Nestled in the tranquil Latchford Village, this charming modernised terrace house on Belmont Avenue offers a delightful blend of comfort and convenience. With two well-proportioned bedrooms, this property is ideal for small families, couples, or individuals seeking a peaceful retreat.

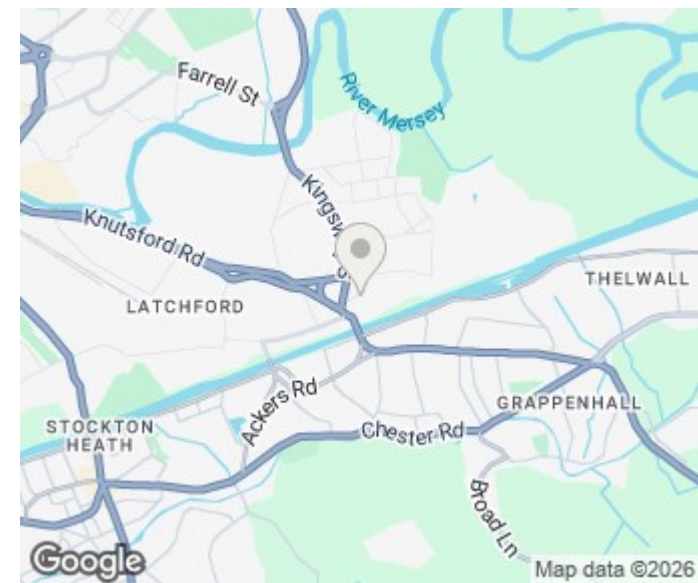
Upon entering, you are greeted by two separate reception rooms, providing ample space for relaxation and entertaining. The modern kitchen is thoughtfully designed, featuring contemporary fittings that make cooking a pleasure. The layout of the home promotes a warm and inviting atmosphere, perfect for both everyday living and hosting guests.





2 BEDROOM MID TERRACE
TOTAL FLOOR AREA: 708 sq.ft. (65.7 sq.m.) approx.

Whilst every attempt has been made to ensure the accuracy of the floorplan contained herein, measurements of doors, windows, rooms and any other items are approximate and no responsibility is taken for any error, omission or misstatement. This plan is for illustrative purposes only and should be used as such by any prospective purchaser. The services, systems and appliances shown have not been tested and no guarantee as to their operability or efficiency can be given.
Made with Metagix (2020)



Energy Efficiency Rating		
	Current	Potential
Very energy efficient - lower running costs		
(92 plus) A		
(81-91) B		
(69-80) C		
(55-68) D		
(39-54) E		
(21-38) F		
(1-20) G		
Not energy efficient - higher running costs		
England & Wales	EU Directive 2002/91/EC	

Agents Note: Whilst every care has been taken to prepare these particulars, they are for guidance purposes only. All measurements are approximate and are for general guidance purposes only and whilst every care has been taken to ensure their accuracy, they should not be relied upon and potential buyers/tenants are advised to recheck the measurements

222 Estates Lettings and Sales
222 Orford Lane Orford
Warrington
Cheshire
WA2 7BB

01925 499599
info@222estates.co.uk
www.222estates.co.uk

