



27 Everard Close, Worsley

Offers Over £330,000

Miller Metcalfe
Every step of the way

27 Everard Close

Worsley, Manchester

*** Internal Viewing a Must - Stunning Semi-Detached Home With Exceptionally Well Proportioned and Highly Versatile Living Space, Private Landscaped Gardens, Garage and Ample Driveway Parking And Situated within a Much Sought After and Convenient Residential Location ***

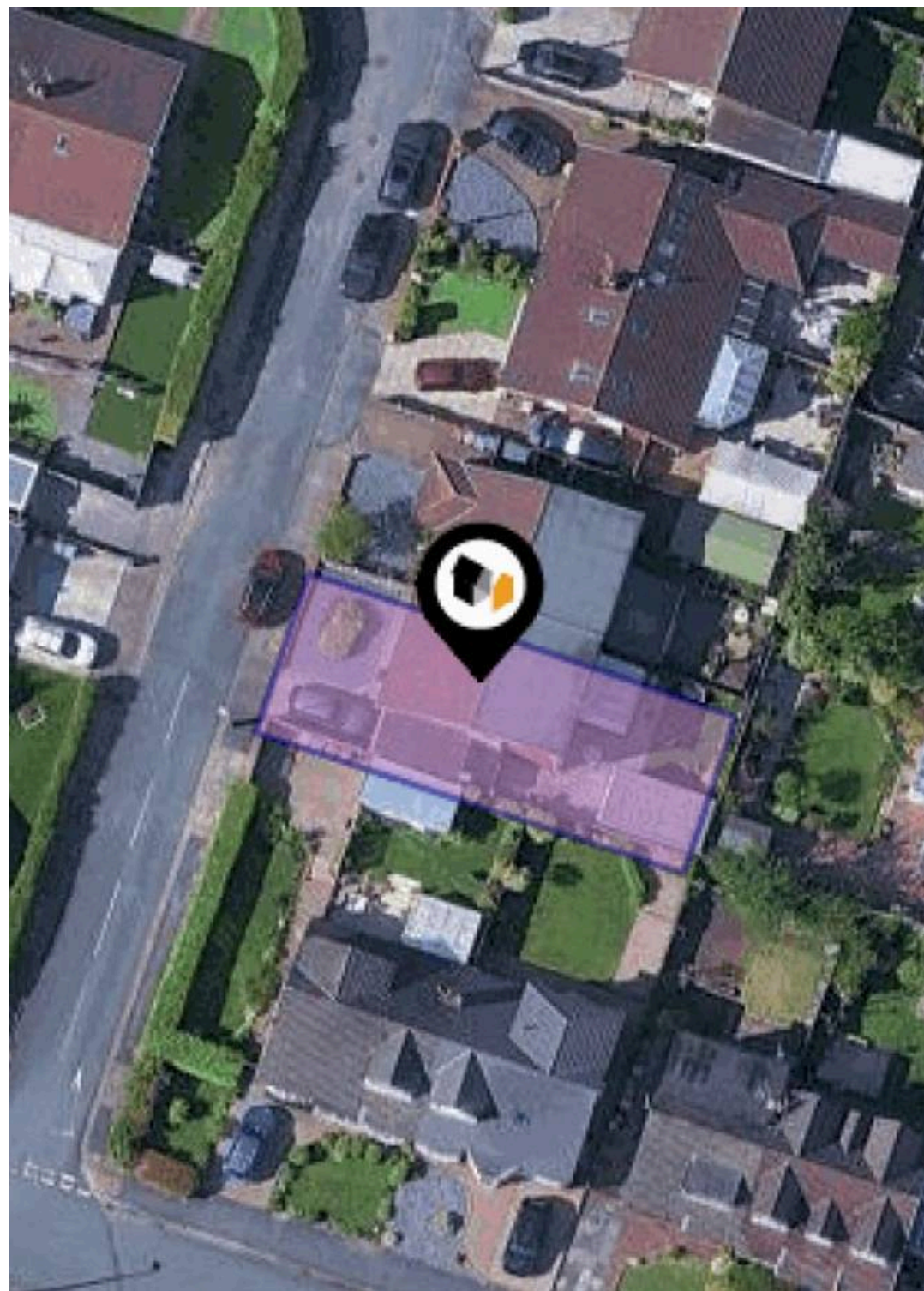
Situated in a popular and highly convenient setting within the much sought after area of Worsley, this wonderful semi-detached home has exceptionally well proportioned living space on both the ground and first floors that is ideally suited to modern lifestyles and must be seen in person to be fully appreciated.

The accommodation comprises a splendid inviting entrance hallway, superb lounge with feature fireplace, addition dining room, conservatory, a kitchen that comprises a wonderful sitting/dining area alongside a modern fitted kitchen with integrated appliances, generous utility room and a cloakroom/wc to the ground floor. On the first floor a wonderful landing with a galleried view over the entrance hall, two good sized double fitted bedrooms, a splendid three piece bathroom/wc and extensive eaves storage can be found which completes the internal living space.

Outside the property is garden fronted with a driveway offering ample parking. The rear garden is private and not overlooked, offering excellent space for relaxing, children's play and al-fresco entertaining. A detached garage provides yet more secure parking along with significant external storage space.

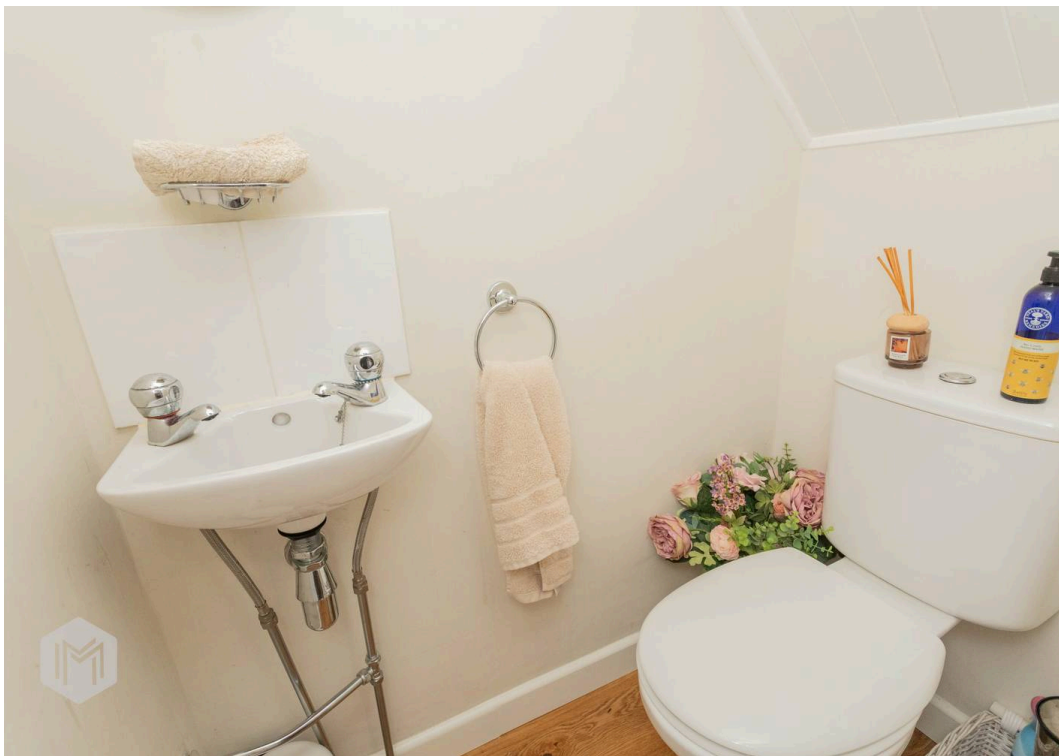
The location is within easy access to the many shops and amenities Worsley and the surrounding areas have to offer and is well placed for well renowned public and private schooling. It is also ideal for access to major transport links including the nearby guided bus route making it ideal for those looking to commute into Manchester city centre, Salford Quays and across the North West.

Rarely do homes of this type remain on the market for long and as such, an early internal viewing is strongly advised to avoid disappointment.













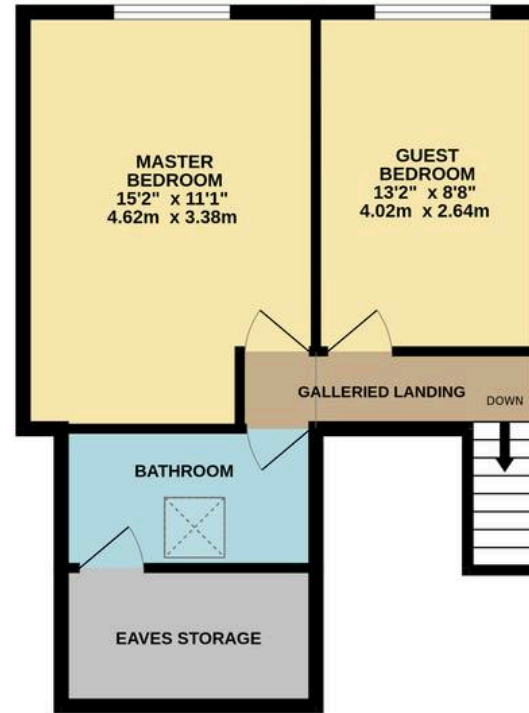




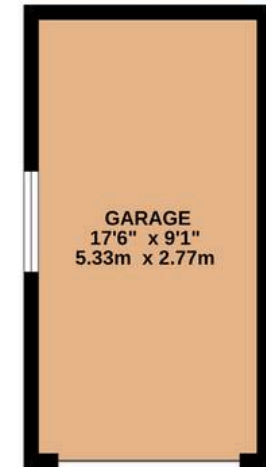
GROUND FLOOR
687 sq.ft. (63.8 sq.m.) approx.



1ST FLOOR
447 sq.ft. (41.5 sq.m.) approx.



GARAGE
159 sq.ft. (14.7 sq.m.) approx.



TOTAL FLOOR AREA : 1292 sq.ft. (120.1 sq.m.) approx.

Whilst every attempt has been made to ensure the accuracy of the floorplan contained here, measurements of doors, windows, rooms and any other items are approximate and no responsibility is taken for any error, omission or mis-statement. This plan is for illustrative purposes only and should be used as such by any prospective purchaser. The services, systems and appliances shown have not been tested and no guarantee as to their operability or efficiency can be given.
Made with Metropix ©2026



Miller Metcalfe Worsley

78 Manchester Road, Worsley - M28 3LN

01617949798 • worsley@millermetcalfe.co.uk • millermetcalfe.co.uk/

Miller Metcalfe
Every step of the way