



*Jordan fishwick*

35 Longford Place, M14 5QF  
Guide Price £1,907 Per Calendar Month



## Longford Place Victoria Park M14 5QF

£1,907 Per Calendar Month



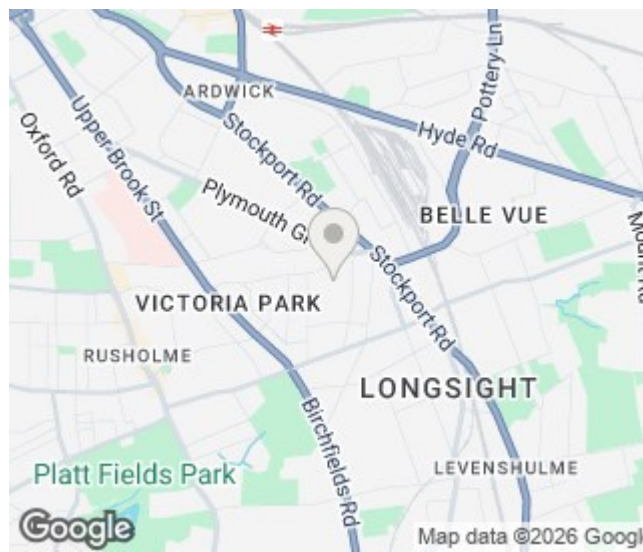
### The Property

\*\*\* AVAILABLE 1st JULY 2026 \*\*\* HALF RENT FOR JULY \*\*\* £110.00 PPPW \*\*\* BILLS PACKAGE AVAILABLE \*\*\* STUDENT PROPERTY \*\*\* An extremely spacious four double bedroom terraced house situated in Victoria Park, just off Daisy Bank Road. The accommodation available is ideal for students and comprises; entrance hall, spacious lounge, second sitting room, dining room, kitchen, four large double bedrooms and a modern bathroom. Fully Furnished.

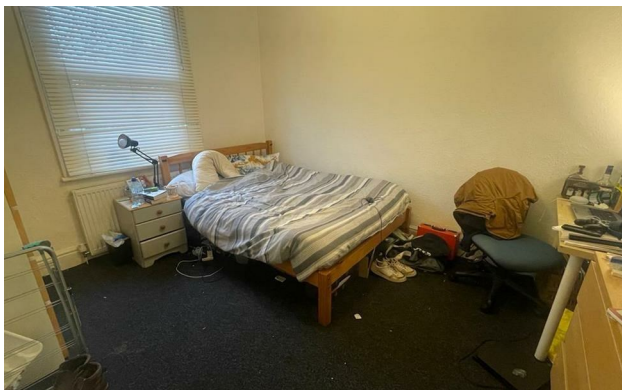
View our Virtual Tour here - <https://youtu.be/xNZVwpyl5gg>

EPC Rating E / Council Tax Band C

- Available July 2026
- £110.00 PPPW
- Four Double Bedrooms
- Students Only
- Fully Furnished
- Close to Universities
- Great Location
- Bills Package Available
- Council Tax Band C
- EPC Rating E



Energy Efficiency Rating		
	Current	Potential
Very energy efficient - lower running costs		
(92 plus) <b>A</b>		
(81-91) <b>B</b>		
(69-80) <b>C</b>		<b>70</b>
(55-68) <b>D</b>		
(39-54) <b>E</b>	<b>47</b>	
(21-38) <b>F</b>		
(1-20) <b>G</b>		
Not energy efficient - higher running costs		
<b>England &amp; Wales</b>	EU Directive 2002/91/EC	





These particulars are believed to be accurate but they are not guaranteed and do not form a contract. Neither Jordan Fishwick nor the vendor or lessor accept any responsibility in respect of these particulars, which are not intended to be statements or representations of fact and any intending purchaser or lessee must satisfy himself by inspection or otherwise as to the correctness of each of the statements contained in these particulars. Any floorplans on this brochure are for illustrative purposes only and are not necessarily to scale.

Offices at: Chorlton, Didsbury, Disley, Hale, Glossop, Macclesfield, Manchester Deansgate, Manchester Whitworth Street, New Mills, Sale, Wilmslow and Withington