
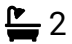



PHIL ABRAHART

POWERED BY
exp UK

Maydowns Road, Chestfield, Whitstable, CT5 3LL

£450,000

 2  2  2



PRICE RANGE £450,000 to £500,000. 2 Bedroom Extended Detached bungalow all on one level 1905 sq ft sits in a prime spot in a renowned desirable location in Chestfield, with paid for Solar Panels helping towards those electricity costs, offering the perfect blend of seaside serenity and convenient living with close ties to vibrant Whitstable. Just 1.8 km from Herne Bay Beach and 3 km from Whitstable Beach.

The generous lounge features a cosy wood burner as well as a separate sitting room. Note: The property has clutter (to be cleared) and needs your personal touch some investment is required, which is reflected in the price. Current photos are paired with three AI visuals showing potential. The rear garden is great for entertaining or growing produce. Parking accommodates multiple cars plus a motorhome.

Local amenities include Chestfield Medical Centre, Over 60's activities, pubs, cafes, and easy transport links to London and Canterbury. PA1009

 07778 703 438
 phil.abrahart@exp.uk.com
 philabrahart.exp.uk.com



Phil Abrahart is an approved agent of eXp World UK Limited, trading as eXp UK, registered at 5 Churchill Place, 10th Floor, London, United Kingdom, E14 5HU. Company number 12016573. VAT no 327 4120 29. If you have instructed another agent to sell your house and instruct eXp World Ltd to sell your property at the same time, then you could be liable to pay both agents. It is recommended that you check the contract you have with your current agent.

PHIL ABRAHART



- Lovely size extended detached bungalow 1905 Plenty of parking for both cars and a square foot of space motorhome
- Ai used to show some of the room and have been staged using Ai
- Paid for Solar panels ideal in the Southerly facing rear garden with lots of space for entertaining and for growing your own food.
- Lovely size Lounge(over 30 foot in length) plus a separate sitting room PRICE RANGE £450,000 to £500,000
- Desirable area and place to come and retire to Take a relaxing stroll or cycle down to the seafront
- The property Does require some updating Quote pa1009 when calling in

Maydowns road, Chestfield, Whistable CT5 3LL
Approximate Gross Internal Floor Area = 178.9 sq m / 1905 sq ft

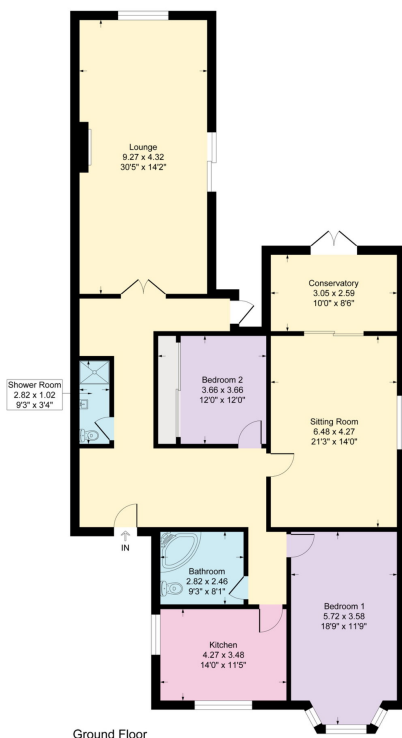


Illustration for identification purposes only, measurements are approximate, not to scale.

07778 703 438

phil.abrahart@exp.uk.com

philabrahart.exp.uk.com



Phil Abrahart is an approved agent of eXp World UK Limited, trading as eXp UK, registered at 5 Churchill Place, 10th Floor, London, United Kingdom, E14 5HU. Company number 12016573. VAT no.327 4120 29. If you have instructed another agent to sell your house and instruct eXp World Ltd to sell your property at the same time, then you could be liable to pay both agents. It is recommended that you check the contract you have with your current agent.