

Heathcote Road, TW1

£419,950

A refurbished two double bedroom apartment in this centrally located gated development with a share of freehold tenure and allocated off-street parking. The entire property has been renovated from top to bottom.

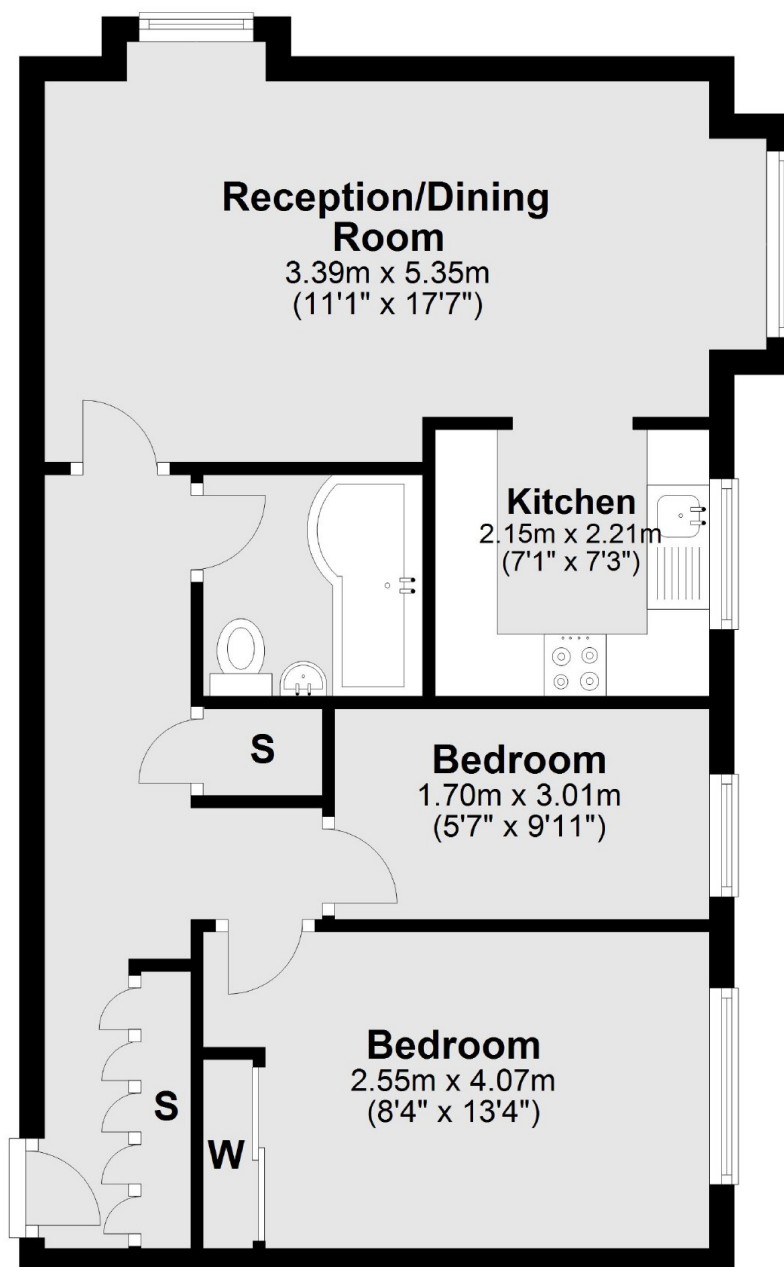
Only moments from the River Thames and its short stroll into Richmond. St Margarets village high street with its train station, shops and cafes is only 0.5 miles away. Old Deer Park, Moor Mead Park and Marble Hill Park are close by.

Features

- Two Double Bedrooms
- Refurbished
- Share Of Freehold
- Allocated Parking
- Gated Development
- Close To The River

Heathcote Road, St Margarets, TW1

Ground Floor



Total area: approx. 51.4 sq. metres (553.2 sq. feet)