



5 Poplar Road, Coventry

Offers Over **£175,000**

**SHELDON
BOSLEY
KNIGHT**

LAND AND
PROPERTY
PROFESSIONALS

5 Poplar Road

Coventry, Coventry

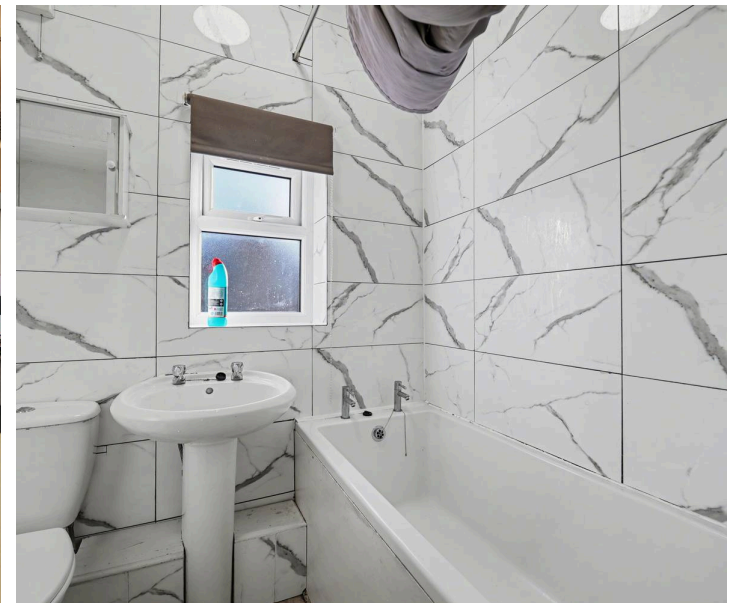
Victorian End Terrace - Three Bedrooms - Prime
Earlsdon Location - Finham Park and Earlsdon
Primary Catchment
Council Tax band: B

Tenure: Freehold

EPC Energy Efficiency Rating: E

EPC Environmental Impact Rating: E

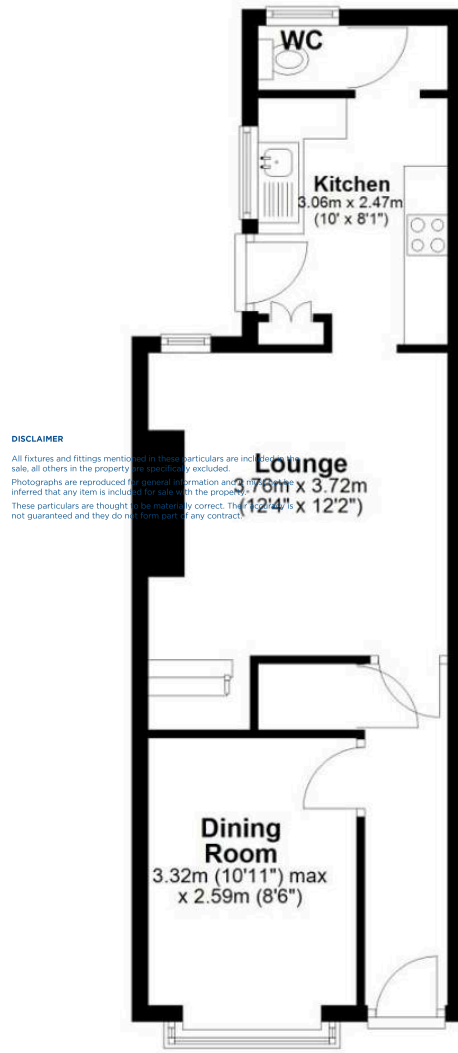
- Victorian End Terrace
- Three Bedrooms
- Ground Floor WC and Upstairs Bathroom
- Prime Earlsdon Location
- Finham Park and Earlsdon Primary Catchment
- No Onward Chain





Ground Floor

Approx. 40.3 sq. metres (433.8 sq. feet)



First Floor

Approx. 39.8 sq. metres (428.0 sq. feet)



Total area: approx. 80.1 sq. metres (861.8 sq. feet)

Sheldon Bosley Knight Coventry

Sheldon Bosley Knight, 29 Warwick Row, Coventry - CV1 1DY

02476258421 · coventrysales@sheldonbosleyknight.co.uk · www.sheldonbosleyknight.co.uk/

DISCLAIMER

All fixtures and fittings mentioned in these particulars are included in the sale, all others in the property are specifically excluded.

Photographs are reproduced for general information and it must not be inferred that any item is included for sale with the property.

These particulars are thought to be materially correct. Their accuracy is not guaranteed and they do not form part of any contract.