



HEWETT STREET, EC2A

£3,000 pcm

Come and visit us at The Stage - this stunning unfurnished one bed is available on the 7th of July. With world class amenities included you will be living in Shoreditch's newest luxury development - organise your flat and development tour today!

- Large 1 Bedroom 1 Bathroom
- UNFURNISHED
- Luxury development
- World class amenities
- Over 600 Sq. ft
- Liverpool Street



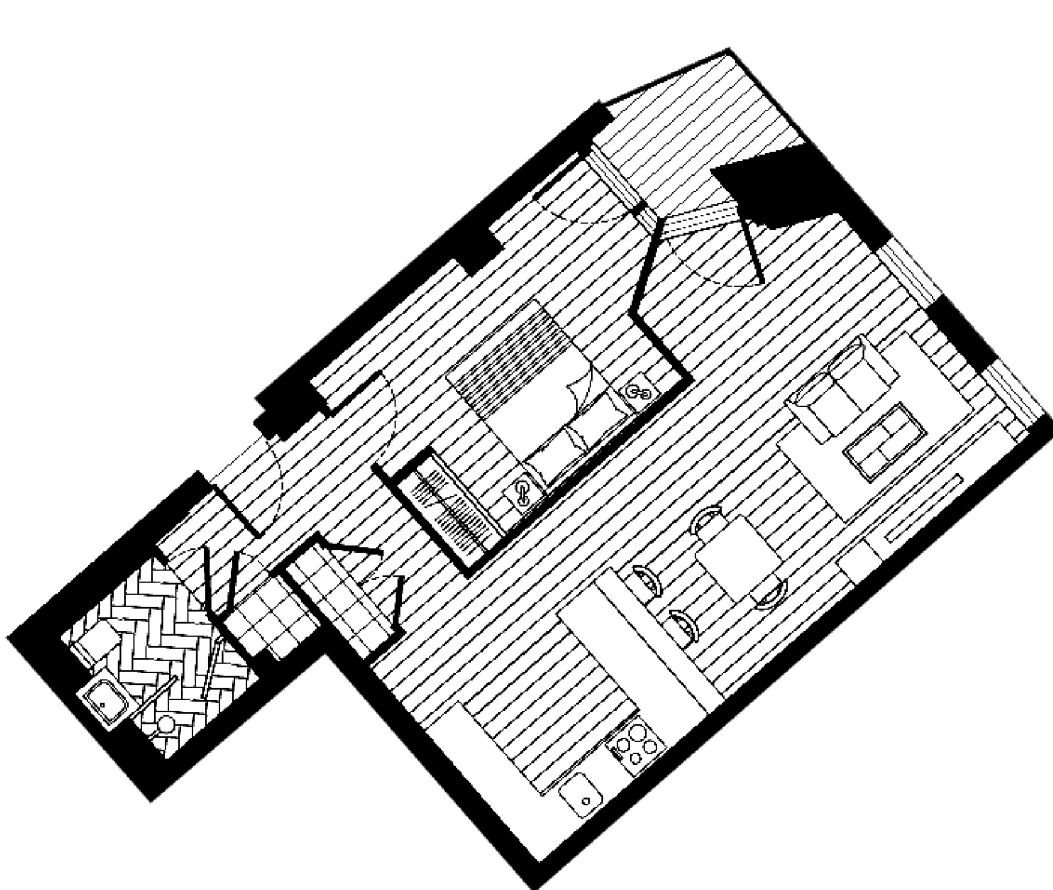
ABOUT THE HOME

Transportation connections around The Stage are exceptional, with easy access to all of London's principal destinations, including those for domestic and international air travel. From Liverpool Street, just a 5-minute walk away, there are 7 tube, rail, and overground services available, making it easy to get around the city and beyond. The development is also located near all of London's principal universities and amid the third largest tech cluster in the world, adjacent to the new Amazon HQ.





1 bedroom apartment



Approximate gross internal area: 618 sq ft / 57sqm

Whilst every attempt has been made to ensure the accuracy of the floorplan contained here, measurements of doors, windows, rooms and any other items are approximate. No responsibility is taken for any error, omission, or mis-statement. This plan is for illustrative purposes only and should be used as such by any prospective purchaser. The services, systems and appliances shown have not been tested and no guarantee as to their operability or efficiency can be given.
© Copyright LiFE Residential 2021.

LiFE RESIDENTIAL

71 Drayton Park, London, N5

1BF

Sales: 020 3838 8666

Lettings: 020 7359 4488

Energy Rating: B. We aim to make our particulars both accurate and reliable. However they are not guaranteed; nor do they form part of an offer or contract. If you require clarification on any points then please contact us, especially if you're traveling some distance to view. Please note that appliances and heating systems have not been tested and therefore no warranties can be given as to their good working order.