

MANOR

2 PARK END COTTAGES PARK END
BLADON | OX20 1AQ



A three-bedroom home situated within the West Oxfordshire village of Bladon. This well proportioned home offers generous living space across three floors, plus parking and a garage.

Part of a stone-built development from the early 2000s, Park End Cottages demonstrates exceptional build quality throughout.

The ground floor features an entrance hall with cloakroom, a living room, and an open-plan kitchen/dining area with patio doors to the rear garden.

Upstairs are three generous bedrooms and two bathrooms, with the principal bedroom benefiting from en suite facilities.

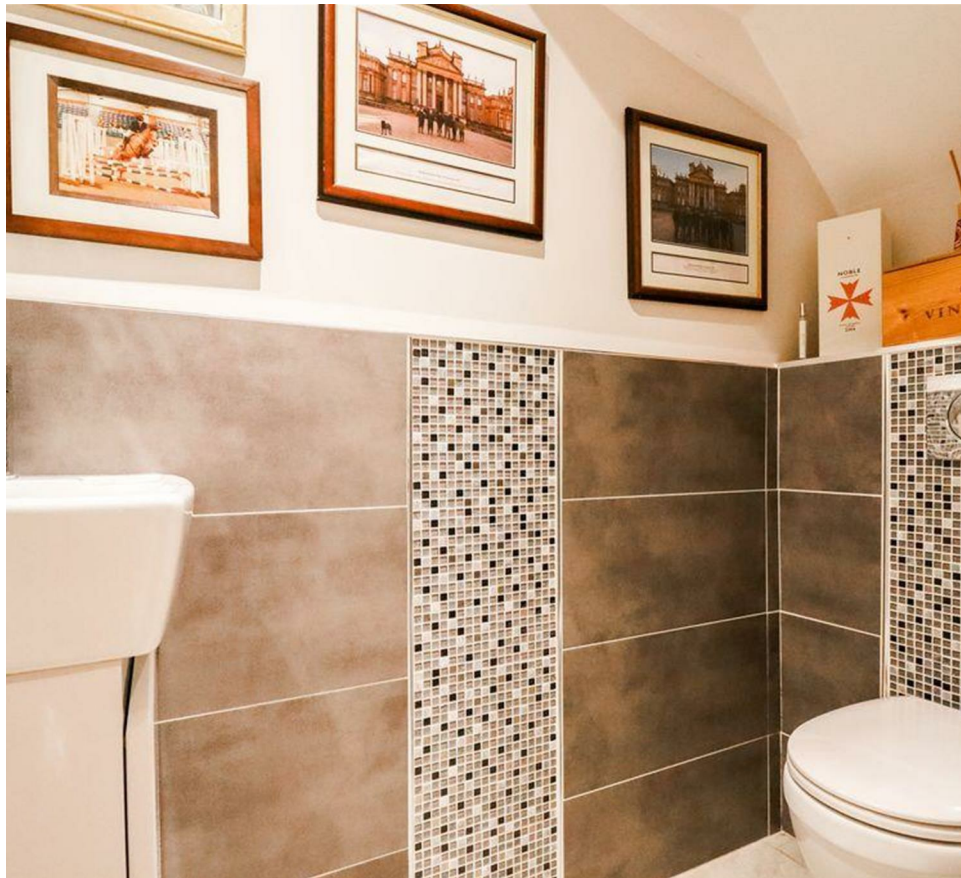
Outside is a landscaped rear garden with a patio area ideal for entertaining, complemented by a garage and allocated parking.

Bladon is a highly desirable West Oxfordshire village with a thriving community, primary school,



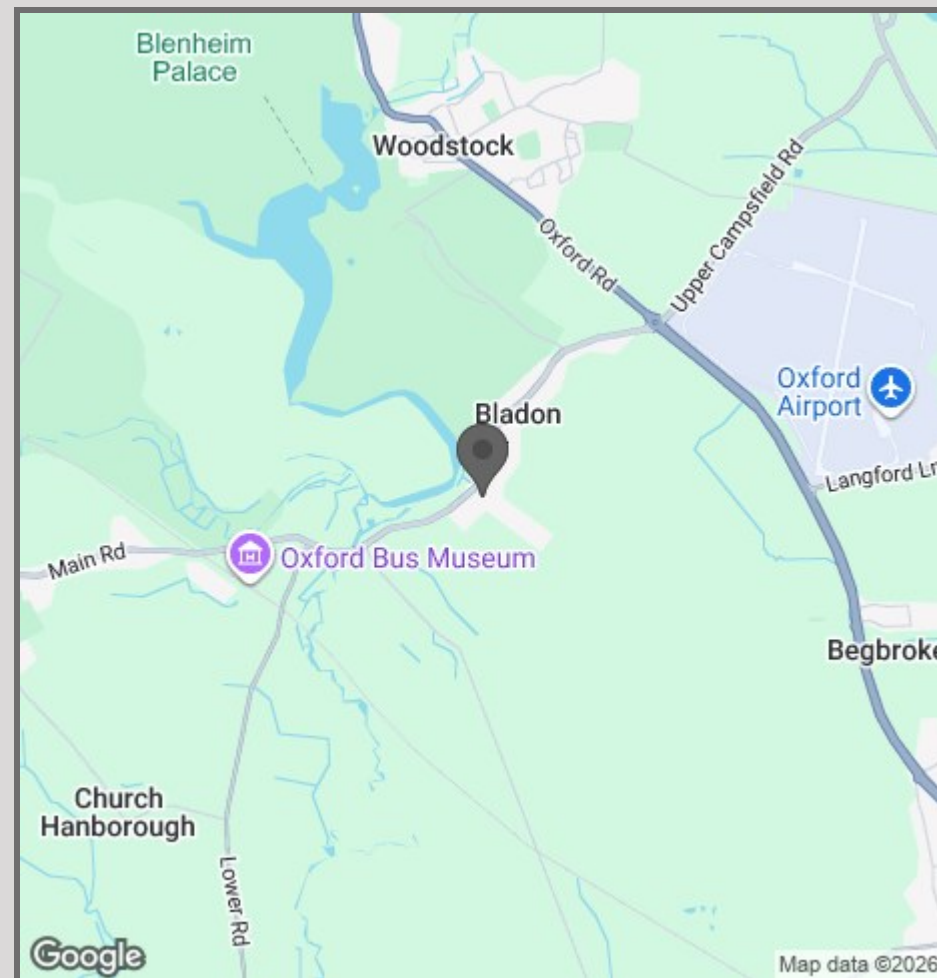


- Modern Development
- Stone Built Homes
- Parking & Garage
- Transport Links
- Potential To Extend STPC
- Schools Nearby
- Village Pub





and the community-owned White House pub. Excellent transport links include regular bus services to Long Hanborough, Witney, and Oxford, plus easy access to Oxford Parkway and Hanborough train stations. Blenheim Palace Estate is nearby with numerous local entry points.



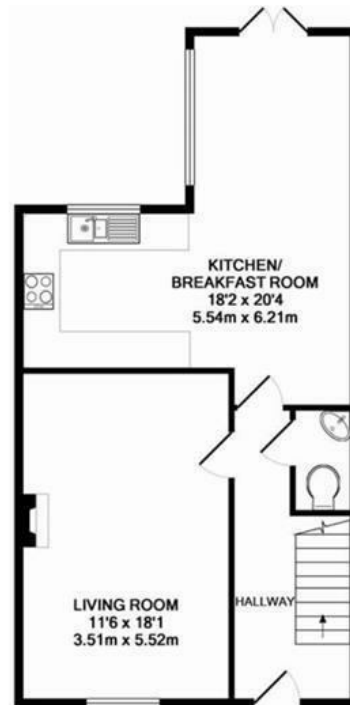
42 High Street
Woodstock
OX20 1TG

01865 955500

hello@manoroxford.com

www.manoroxford.com

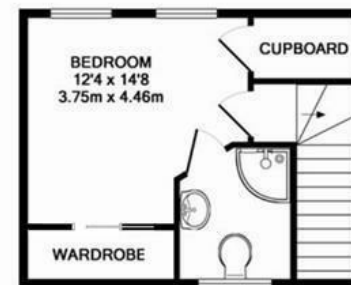
MANOR



GROUND FLOOR
APPROX. FLOOR
AREA 574 SQ.FT.
(53.3 SQ.M.)



1ST FLOOR
APPROX. FLOOR
AREA 486 SQ.FT.
(45.1 SQ.M.)



2ND FLOOR
APPROX. FLOOR
AREA 265 SQ.FT.
(24.7 SQ.M.)

TOTAL APPROX. FLOOR AREA 1325 SQ.FT. (123.1 SQ.M.)

KeyAGENT LTD Floor Plans are produced and provided for illustration purposes only. While every attempt has been made to ensure the plan is accurate and presents the property in the best way, measurements of floors, windows and rooms are approximate and no responsibility is taken for any error, omission or mis-statement. To find out more about KeyAGENT please visit www.keyagent.co.uk (Tel: 0845 475 4765)
Made with Metropix 02011

MANOR