



## Keylands House

Union Lane, Isleworth, TW7

£385,000

A beautiful two double bedroom ground floor modern apartment with private terrace nicely set within a popular development in an excellent location, just moments from Syon Lane Station, the River Thames, and a vibrant selection of local shops, restaurants, and cafes.

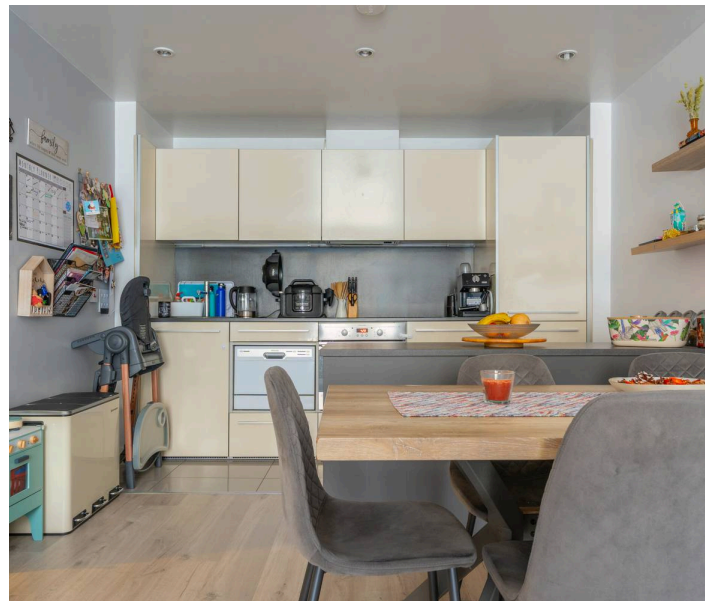
Council Tax band: D

Tenure: Leasehold

EPC Energy Efficiency Rating: C

EPC Environmental Impact Rating: C

- Spacious Two Double Bedroom Modern Apartment
- Large Private Terrace
- Allocated Parking Space
- Great Location - Close to Syon Lane Station, The River Thames and Local Shops, Restaurants and Cafes
- Heating and Hot Water included in Service Charge
- Modern Four Piece Family Bathroom
- Fitted Kitchen with Breakfast Bar
- Excellent Condition Throughout

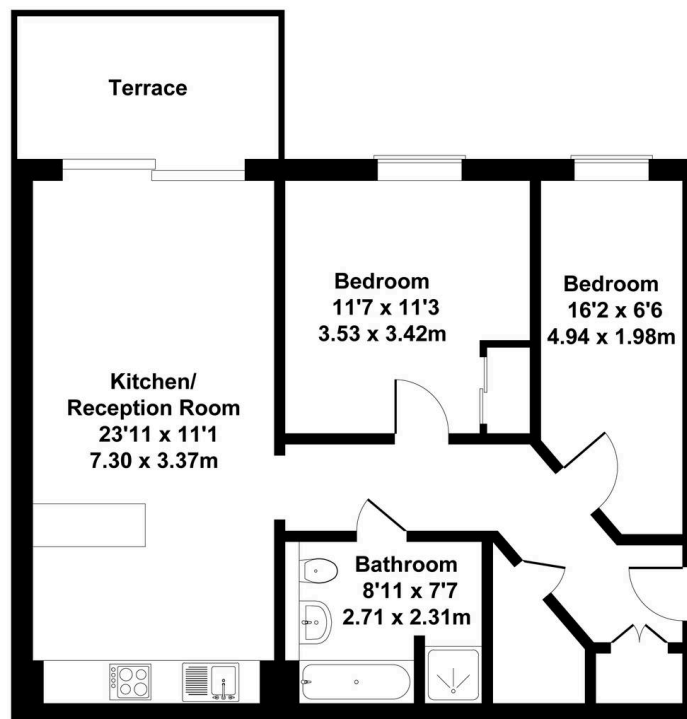


SCAN HERE  
FOR  
PROPERTY  
DETAILS



## Keylands House, TW7 6GL

Approximate Gross Internal Area  
Main House 710 sq ft - 66 sq m  
(Excluding Terrace)



This floorplan is for guidance only and does not form part of an offer or contract.  
Buyers or tenants should verify all details through inspection, searches, and surveys.  
Measurements are approximate and should not be relied upon for valuation or transactions.  
Produced by Plan Portal.  
[www.evovelondon.co.uk](http://www.evovelondon.co.uk)