



Lansdowne Way, SW8

£3,000 Per calendar month

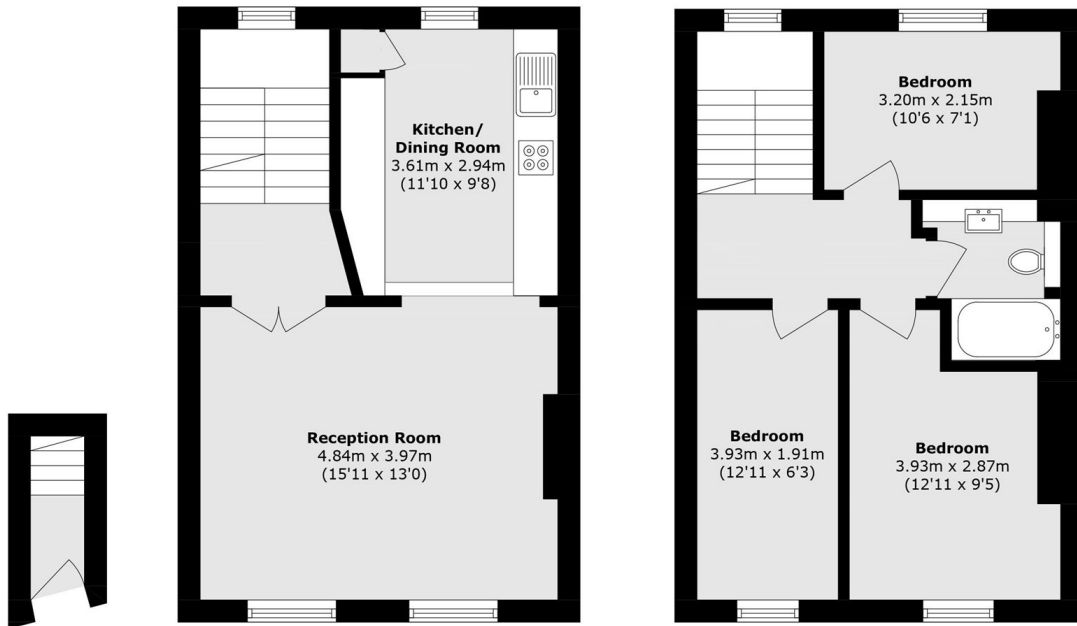
Set on the top floor and split over two levels, this three bedroom flat offers an open plan reception room and a spacious kitchen with a breakfast bar and wooden flooring. There is also three good sized double bedrooms and a bathroom.

Lansdowne Way is situated near Stockwell underground station, providing great access to both Victoria and Northern lines as well as the amenities provided on neighbouring Clapham High Street.

Features

- Three Double Bedrooms
- Top Floor Flat
- Split-Level
- Open Plan Reception
- Spacious Kitchen
- Close To Amenities

Lansdowne Way, London, SW8



Ground Floor

First Floor

Second Floor

Total area (approx.): 76.8 sq. m (826.6 sq. ft)