



Essex Close, Coventry, CV5 7HZ

**SHELDON
BOSLEY
KNIGHT**

LAND AND
PROPERTY
PROFESSIONALS

Property Description

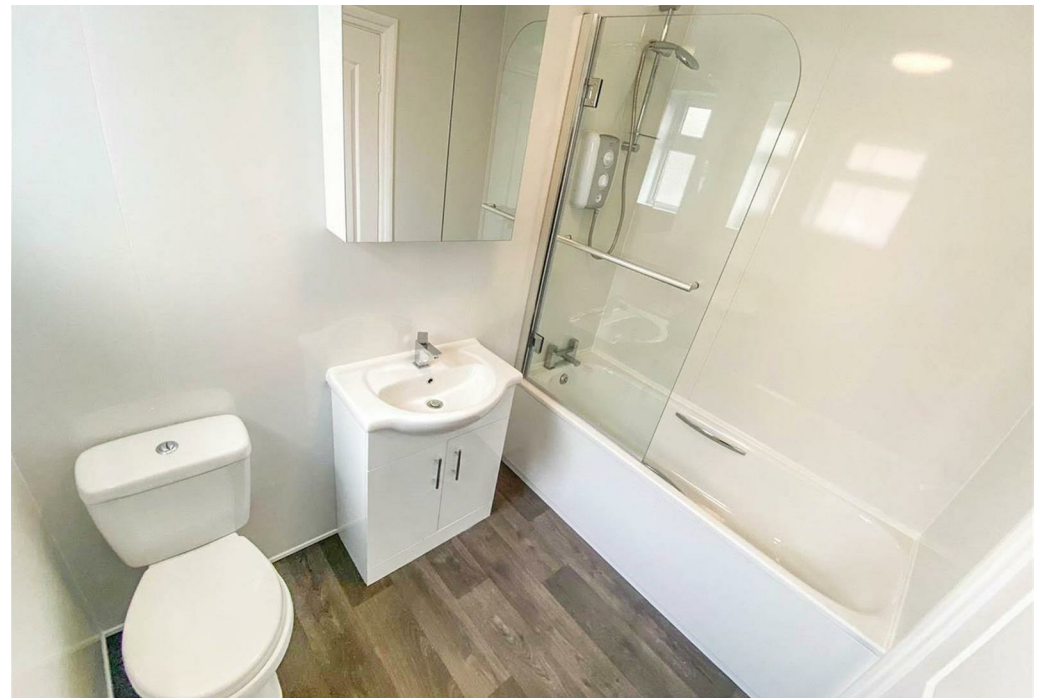
*** AVAILABLE NOW *** This well-presented two-bedroom first-floor apartment is located in the popular residential area of Mount Nod, Coventry, offering convenient access to local amenities, schools, and transport links.

The property comprises an entrance hallway, a family bathroom with a brand new bath, WC and sink, a spacious living room with access to a private balcony, and a newly fitted modern kitchen with space for a fridge freezer and washing machine. There are two double bedrooms, both benefiting from fitted wardrobes.

Further benefits include off-road parking and gas central heating.

Offered UNFURNISHED. Council Tax Band B. Energy Rating D.





Key Features

- Available Now
- Mount Nod, Coventry
- 2 Double Bedrooms
- Apartment
- Unfurnished
- Off Road Parking
- Garage
- Council Tax Band B
- Energy Rating D

£850 PCM