



**Guide Price**  
**£335,000**

**Freehold**

3x  1x  1x 

**Sheridan Close,  
Walderslade, Chatham,  
Kent, ME5**

**OVER 60?**

Secure this property  
for up to **59% less!**

*Wards*  
Helping you move forwards



## Main features

- Charming semi detached house set in a quiet area
- Driveway parking which is a nice to have
- Open plan living/dining area
- Close to local shops and schools
- Short drive to M2/M20 motorway connections

## Accommodation

### GROUND FLOOR

Entrance Porch

Hallway

Lounge/Diner : 12'5 (3.79m) x 11'5 (3.48m)  
narrowing to 8'5 (2.57m)

Kitchen : 8'7 x 8'5 (2.62m x 2.57m)

### FIRST FLOOR

Landing

Bedroom 1 : 13'5 x 11'5 (4.09m x 3.48m)

Bedroom 2 : 11'5 x 10'2 (3.48m x 3.10m)

Bedroom 3 : 8'6 x 7'0 (2.59m x 2.14m)

Bathroom : 8'5 x 5'4 (2.57m x 1.63m)

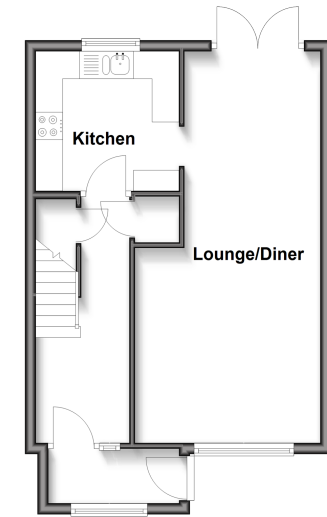
### OUTSIDE

Driveway

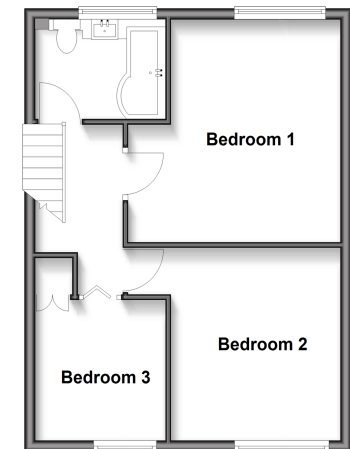
Front Garden

Rear Garden

**Ground Floor**  
Approx. 40.6 sq. metres (436.7 sq. feet)



**First Floor**  
Approx. 43.8 sq. metres (471.6 sq. feet)



**Call Walderslade - 01634 865661 ■ [wardsofkent.co.uk](http://wardsofkent.co.uk)**

- Legal advice should be taken to verify fixtures/fittings, planning, alterations and/or lease details
- Appliances & services are untested, dimensions are approximate and floor plans are not to scale
- Through a Homewise Home For Life Plan people aged 60+ can secure this property for up to 59% less, by purchasing a Lifetime Lease



12138242/20251211/ML/AH