



Thurlstone, Sheffield, S36 9RA

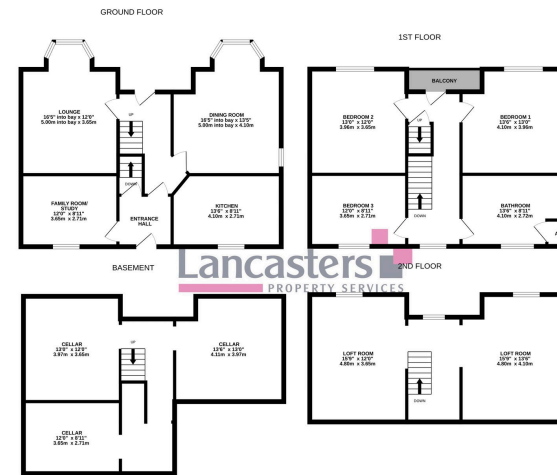
£375,000

3 1 3



- Stunning Character Home
- 3 Double Bedrooms & Attic
- 3 Reception Rooms & Breakfast Kitchen
- Little Known Tucked Away Position
- No Upwards Chain
- Large Cellar / Basement - Potential to Convert
- Sought After Village Location
- Open Countryside
- Local Services & Amenities
- Off Road Parking





Whilst every attempt has been made to ensure the accuracy of the floorplan contained here, measurements of doors, windows, rooms and any other items are approximate and no responsibility is taken for any error, omission or mis-statement. This plan is for illustrative purposes only and should be used as such by any prospective purchaser. The services, systems and appliances shown have not been tested and no guarantee as to their operability or efficiency can be given.
Made with Metropix ©2025

Occupying a little known, tucked away position, a delightful Victorian home offering spacious accommodation, offered to the market with NO UPWARDS CHAIN, positioned on the outskirts of the village, open countryside on the doorstep and an abundance of local facilities close by.

Score	Energy rating	Current	Potential
92+	A		
81-91	B		81 B
69-80	C		
55-68	D	60 D	
39-54	E		
21-38	F		
1-20	G		



Lancasters Property Services
Property Professionals For Over 230 Years
 Independent Estate Agents, Surveyors & Property Management
Email: mail@lancasters-property.co.uk
 In association with Lancasters Property Management Ltd.

Lancaster House, 20 Market St.
Penistone S36 6BZ
Tel: (01226) 763307