



St. Donatts Road, SE14

£1,250,000

Spanning three floors and offering over 1,600 sq ft of accommodation, this mid-terrace Victorian townhouse provides an excellent opportunity to create a bespoke family home.

St Donatt's Road is a quiet residential street that benefits from close proximity to both New Cross and Brockley for a wealth of shops, bars and restaurants. For excellent transport links, both New Cross and Brockley Station (fare zone 2) are easily accessible. Parking on-street is currently also unrestricted.

Features

- Victorian Townhouse
- Spanning Over Three Floors
- Four Double Bedrooms
- Original Features
- Private Front and Rear Garden
- No Onward Chain



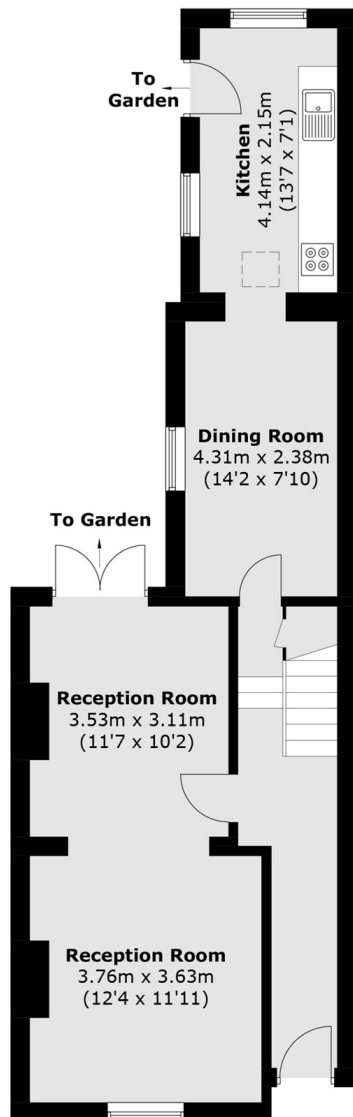
St. Donatts Road, SE14

The ground floor boasts generous and flexible living space, including an elegant front reception with original wooden shutters flowing through to a rear dining room featuring an original fireplace and French doors opening directly onto the garden. An additional reception room, provides further versatility, giving three reception rooms in total. A separate kitchen also offers direct access to the garden, ideal for entertaining and family living.

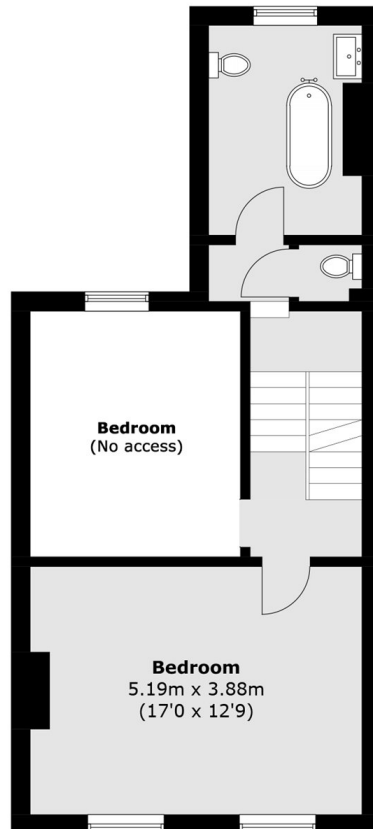
The first floor comprises two well-proportioned double bedrooms, a family bathroom and a separate WC. The second floor provides two further double bedrooms, completing this spacious and characterful home.



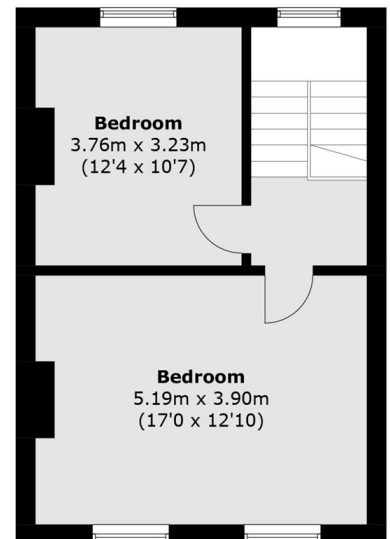
St. Donatts Road, London, SE14



Ground Floor



First Floor



Second Floor

Total area (approx.): 149.7 sq. m (1,611.4 sq. ft)