

11 DE PORT HEIGHTS
Corhampton, SO32 3DA
Asking Price £585,000

WELLER
PATRICK



PROPERTY FEATURES

A superb, three-bedroom detached house situated in the sought after Meon Valley village of Corhampton

Attractively presented accommodation • Sitting Room • Kitchen/Breakfast Room • Cloakroom

Three Bedrooms • Walk in Wardrobe & En-Suite to Bedroom 1 • Family Bathroom with Shower

Attractive Rear Garden • Driveway & Parking • Viewing Recommended



DESCRIPTION

Situated in the sought after Meon Valley village of Corhampton and within the South Downs National Park is this superb, detached property offering attractive and comfortable accommodation.

The property enjoys a pleasant location within this highly desirable, rural yet highly accessible small close of detached properties constructed approximately seven and half years ago.

Features include underfloor heating, attractive wood flooring to several areas of the ground floor, double glazing, solar panels plus a Tesla battery, attractive bathrooms, kitchen with integrated Bosch appliances, sitting room with a log burner. There is oak flooring to the hall and the sitting room which includes a brick fireplace and wood burning stove.

The superb kitchen/dining room with bifold doors opens onto the patio and garden. The well-equipped kitchen includes a range of units with quartz worksurfaces and integrated Bosch appliances including a fridge/freezer, microwave oven, induction hob, oven, extractor fan, dishwasher and washer dryer.

On the first floor, the master bedroom features a walk-in wardrobe and an ensuite with a full width shower. The second bedroom includes a built-in wardrobe. The main bathroom includes both a bath and a shower.

The property enjoys a pleasant approach over a feature brick paved driveway. A side access with tap and power point leads to the rear garden. The rear garden being attractively presented and including a paved patio area and garden shed. Air source heat pump and Tesla Battery.

A particular feature within the Meon Valley is the countryside and scenery. There are many walks to be discovered and enjoyed including the Meon Valley trail along the old railway track, Old Winchester Hill and Beacon Hill. Nearby are two riverside pubs, walks and a village shop with post office.

The delightful country town of Bishops Waltham is within a short drive and offers a range of shops, and services from its traditional high street including coffee shops and eateries. The major centres of Winchester, Southampton, Petersfield and Portsmouth are easily accessible as are main line rail services.

DIRECTIONS

From Bishops Waltham take the B3035 to Corhampton and Meonstoke. At the roundabout in Corhampton turn left onto the A32. Continue past the village store then turn right into DePort Heights. No 11 can be found after a short distance on the left.

Particulars prepared 23rd December 2025

LOCAL AUTHORITY AND SERVICES

Winchester City Council - Council tax band E

Services: Mains electricity and water. Private drainage. Air source heat pump, underfloor heating. Solar panels linked to a Tesla Battery.

VIEWINGS

By appointment through Weller Patrick.
Tel: 01489 893555

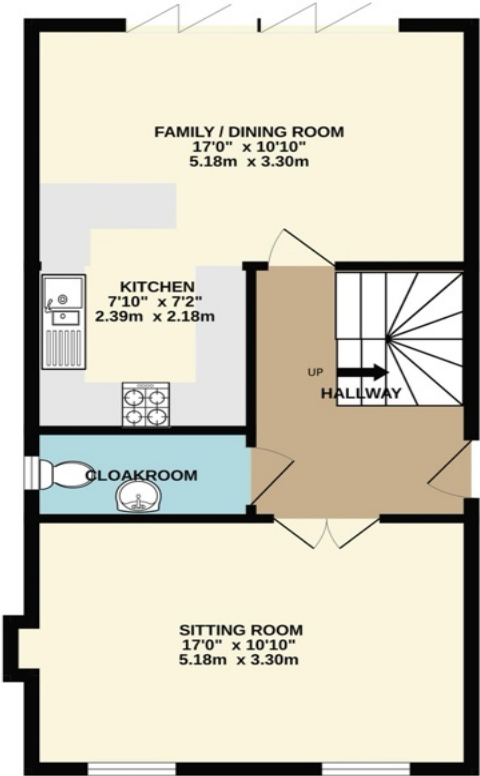




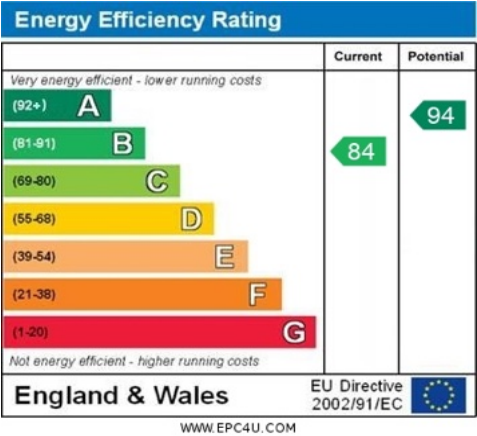
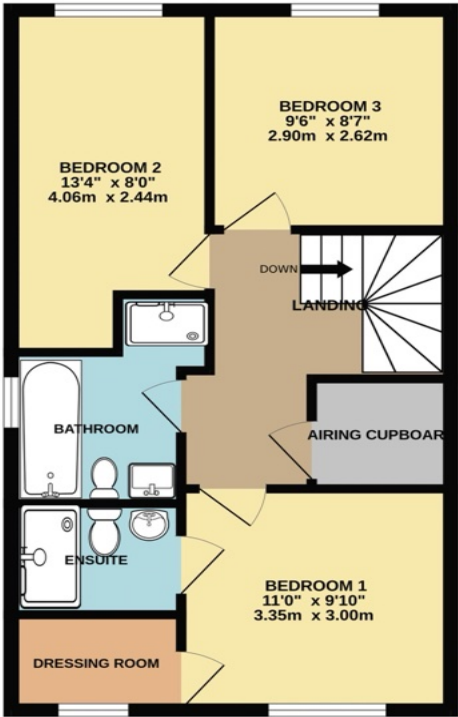
11 De Port Heights
Corhampton
SO32 3DA



GROUND FLOOR



1ST FLOOR



Whilst every attempt has been made to ensure the accuracy of the floorplan contained here, measurements of doors, windows, rooms and any other items are approximate and no responsibility is taken for any error, omission or mis-statement. This plan is for illustrative purposes only and should be used as such by any prospective purchaser. The services, systems and appliances shown have not been tested and no guarantee as to their operability or efficiency can be given.
Made with Metropix 5/2025