



Guide Price
£260,000

Leasehold

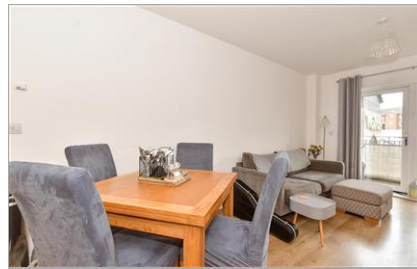
2x  2x  1x 

**Cornflower Court,
Sovereign Way,
Tonbridge, Kent, TN9**

OVER 60?

Secure this property
for up to **59% less!**

Wards
Helping you move forwards



Main features

- **Modern open plan living/kitchen/diner with fitted white goods**
- **Large spacious bedrooms, one of which has an ensuite**
- **Private balcony and allocated parking**
- **Walking distance to the High Street and station**
- **Perfect for first time buyers and investors**

Accommodation

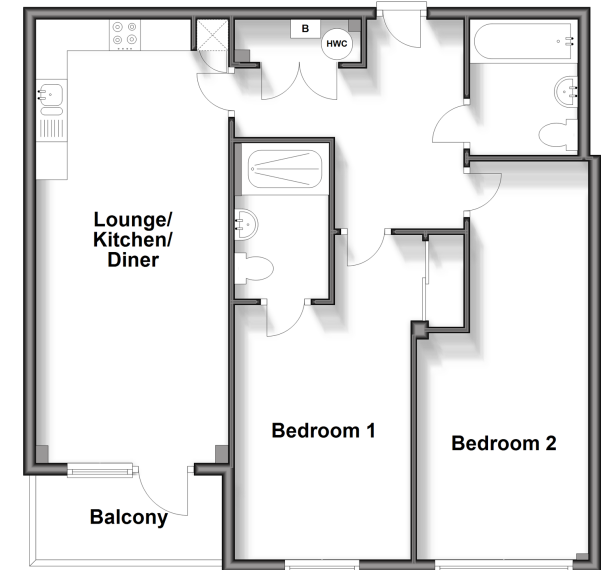
FIRST FLOOR

Hallway
 Lounge/Kitchen/Diner: 23'10 x 10'0 (7.27m x 3.05m)
 Balcony
 Bedroom 1: 17'0 x 9'0 (5.19m x 2.75m)
 En Suite Shower Room
 Bedroom 2: 20'10 x 8'11 (6.35m x 2.72m)
 Bathroom

OUTSIDE

Allocated Parking

First Floor
 Approx. 71.0 sq. metres (764.0 sq. feet)



Call Tonbridge - 01732 770755 ■ wardsofkent.co.uk

■ Legal advice should be taken to verify fixtures/fittings, planning, alterations and/or lease details
 ■ Through a Homewise Home For Life Plan people aged 60+ can secure this property for up to 59% less, by purchasing a Lifetime Lease.

■ Appliances & services are untested, dimensions are approximate and floor plans are not to scale