



ROSS BURBIDGE

exp

@ ross.burbidge@exp.uk.com

rossburbidge.exp.uk.com

07792 512 628

# Hildyard Close, Hardwicke, Gloucester, GL2

£450,000

🛏️ 4 🚿 1 🚗 2



Please Quote: RB1393-Ross Burbidge. This stunning four-bedroom bungalow has been completely transformed to an exceptional standard, offering a true turnkey home where every detail has been carefully considered. Stylish, contemporary and beautifully finished throughout, this is a property ready to move straight into and enjoy from day one.

The layout is both practical and versatile, with three well-proportioned bedrooms located on the ground floor. The standout principle bedroom offers a unique touch, featuring a cleverly designed hidden walk-in wardrobe, adding both character and functionality. The bathroom is equally impressive, finished in a distinctive, niche style that perfectly complements the overall design of the home.

To the rear, the property truly comes into its own with a breath-taking open-plan kitchen/diner. This space has been designed with modern living in mind, complete with high-quality integrated appliances and ample room for both dining and relaxed seating areas, making it ideal for entertaining or everyday family life.

Upstairs, an additional fourth bedroom provides further flexibility, whether for guests, a home office or additional living space.

The property is offered fully furnished, with the furniture included as part of the sale, enhancing the turnkey appeal and allowing the next owner to simply unpack and settle in.

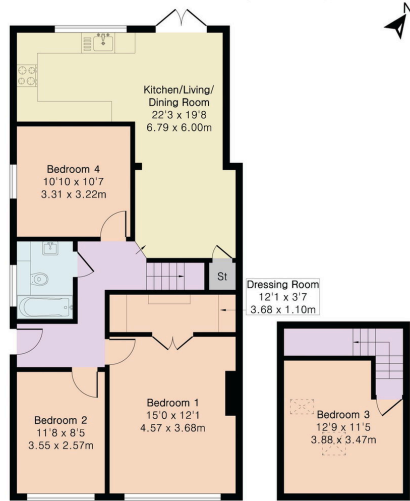
This is a rare opportunity to acquire a beautifully curated home where style, comfort and practicality combine effortlessly.



Approximate Gross Internal Area 1086 sq ft - 101 sq m

Ground Floor Area 906 sq ft - 84 sq m

First Floor Area 180 sq ft - 17 sq m



- Amazing Four Bedroom Semi-Detached Home
- Furniture All Included
- Wonderful Finish Throughout
- Principle Bedroom With Walk In Wardrobe
- Off Road Parking
- Please Quote: RB1393-Ross Burbidge
- Stunning Kitchen
- No Onward Chain
- Upstairs Double Bedroom
- Landscaped Rear Gardens

