



 **3**
Bedrooms

 **1**
Bathroom



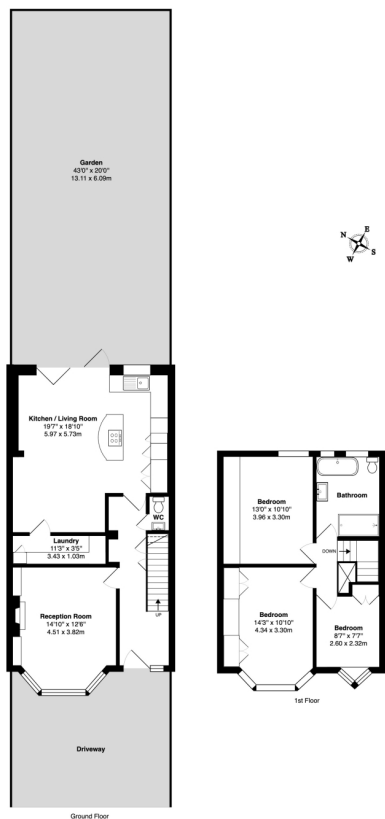
This charming end terrace property in Mill Hill offers three bedrooms, one bathroom, and two reception rooms. The home features a modern kitchen-diner, off-road parking, and a well-maintained garden. With full double glazing and gas central heating, this property provides comfort and convenience in a desirable location.

Situated in the sought-after area of Mill Hill, this three-bedroom end terrace property offers a comfortable and practical living space. The home includes a modern kitchen-diner, perfect for family meals and entertaining. The kitchen is equipped with contemporary appliances and ample storage, providing a functional space for cooking and dining. The property boasts two reception rooms, offering flexibility for living and entertaining. The main reception room is bright and spacious, with large windows allowing natural light to flood in. The second reception room can be used as a family room or home office, catering to various lifestyle needs.

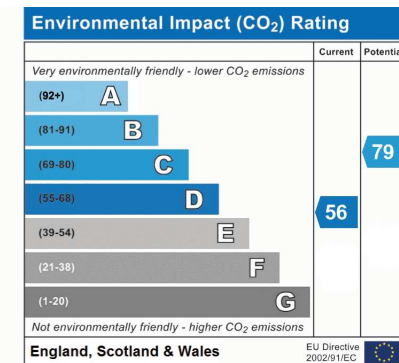
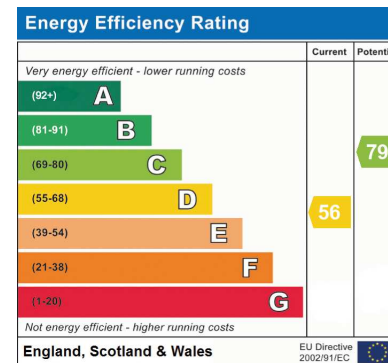
The property features a well-maintained garden, providing a private outdoor space for relaxation and recreation. The garden is accessible from the kitchen-diner, making it ideal for outdoor dining and entertaining. Off-road parking is available, ensuring convenience for residents and visitors.

Additional features include full double glazing and gas central heating, enhancing the property's energy efficiency and comfort. The home is located in a convenient area, with easy access to local amenities, schools, and transport links. Mill Hill offers a range of shops, cafes, and parks, providing a vibrant community atmosphere.

The Energy Performance Certificate (EPC) rating for this property is D, with a potential to improve to C, indicating moderate energy efficiency. This property is an excellent opportunity for those seeking a family home in a desirable location, combining comfort, convenience, and potential for future enhancement.



Birkbeck Road NW7
Total Gross Area: 1188 sq. ft. ... 110.3 m² (excluding garden, driveway)
Floor plans are for identification and guidance purposes only, not to scale
Compare EPC code of requesting practice



Address: 52 BIRKBECK ROAD NW7 4AT

