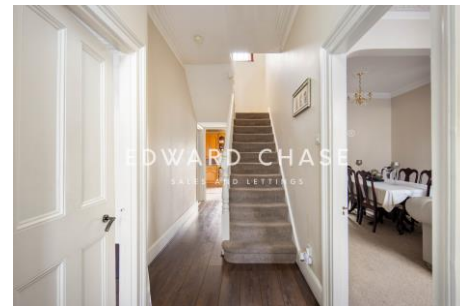




Kingswood Road Ilford, IG3 8UE

Guide Price: £850,000 - £875,000 Edward Chase proudly presents this substantial Victorian four-bedroom semi-detached corner house situated on the ever-popular Kingswood Road, IG3 for sale. Offering approximately 1,777 sq ft of internal accommodation, this bright and airy family home combines generous proportions, high ceilings and modern presentation throughout, making it ideal for buyers seeking a spacious property ready for immediate occupation. Beautifully maintained and presented to a clean modern standard, the property offers flexible living accommodation comprising two generous reception rooms, a large open kitchen/reception area, two bathrooms, four bedrooms, additional loft room and bricked rear shed. Positioned on a prominent corner plot, the property benefits from excellent natural light throughout alongside significant future development potential. Subject to the necessary planning permissions, there is clear scope for a



- Victorian 4/5 bedroom semi-detached corner house with 2 garages
- Two spacious reception rooms plus open-plan kitchen/living area
- Two bathrooms including a ground floor bathroom
- Approximately 1,777 sq ft of internal living space
- Four well-proportioned bedrooms on the first floor plus loft room
- Basement/cellar providing useful storage space

Guide Price £850,000

