



Avenue Road, TW12

£425,000

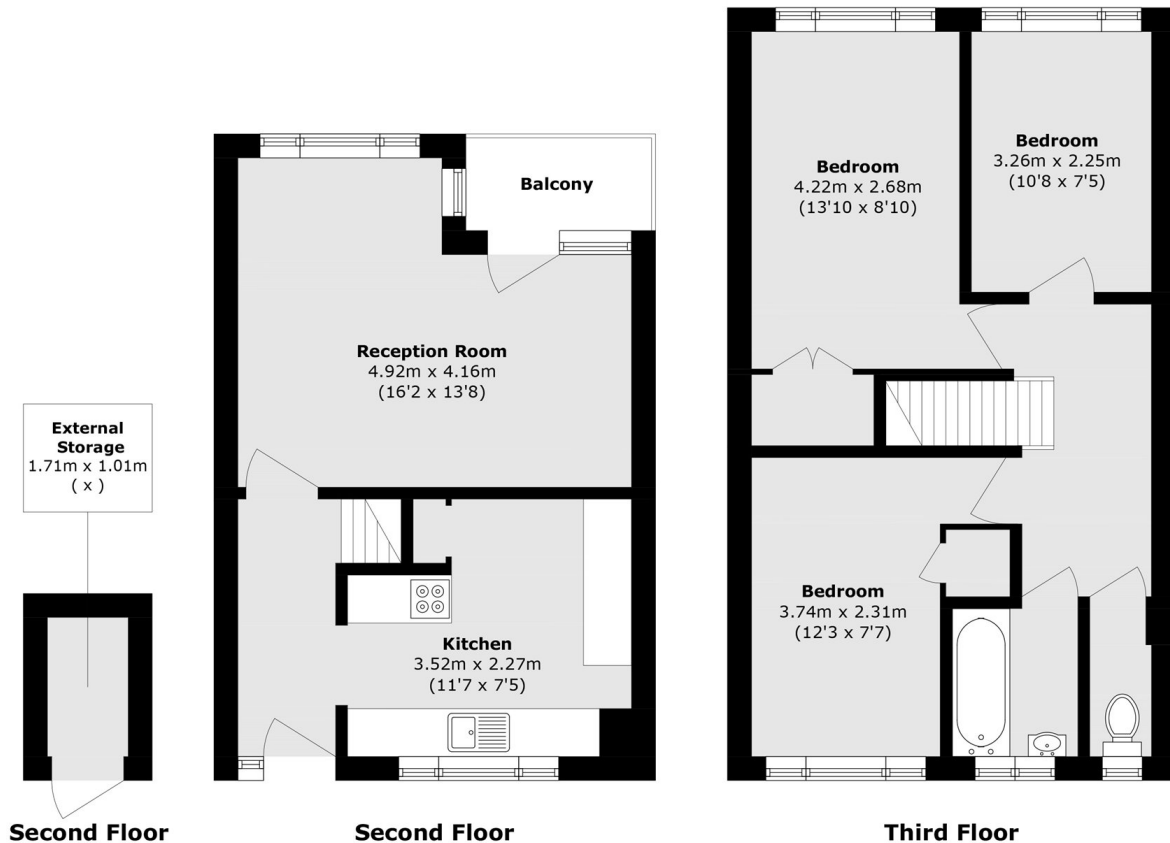
Spacious three bedroom, split level maisonette in a central location, coming with no onward chain. Featuring a private balcony and strong rental yield potential, this is an ideal home or investment purchase.

Avenue Road is a very popular road within the Hampton village and is great if you require a short walk to the station and love having both shops and restaurants on your doorstep. Excellent schools, Bushy Park and the River Thames are also close by.

Features

- Three Bedrooms
- Split Level Maisonette
- No Onward Chain
- Great Rental Yield
- Central Location
- Balcony

Avenue Road, Hampton, TW12



Total area (approx.): 79.3 sq. m (853.6 sq. ft)
Balcony area (approx.): 2.6 sq. m (28.0 sq. ft)
External Storage area (approx.): 1.8 sq. m (19.4 sq. ft)