



Kingsmead Avenue

Worcester Park

£850,000



Kingsmead Avenue

Worcester Park

- Three double bedroom detached bungalow
- 2298 sqft
- Highly sought-after location
- Catchment area for outstanding schools
- Spacious ensuite loft-room with study/walk-in wardrobe
- Bright and spacious throughout
- Perfect to put your own stamp on
- Detached garage and ample off-street parking
- Potential to extend (STPP)

Presenting this impressive three double bedroom detached bungalow, offering approximately 2,298 square feet of well-proportioned accommodation in a highly sought-after location, within the catchment area for outstanding schools. This bright and spacious property is perfect for those seeking a home to put their own stamp on, with the added benefit of potential to extend (subject to planning permission). Upon entering, you are greeted by a welcoming hallway that leads to generously sized living spaces, all thoughtfully arranged to maximise natural light and a sense of openness. The heart of the home is a substantial living room which leads onto the conservatory, ideal for both relaxing and entertaining, complemented by a kitchen that provides ample storage and workspace. The secluded westerly landscaped garden provides a beautiful retreat to unwind after a long day.



The ground floor features three sizeable double bedrooms, each offering flexible use as guest rooms or family accommodation, as well as a family bathroom. Upstairs, the expansive loft-room serves as a superb principal suite, complete with a spacious ensuite bathroom and a versatile study or walk-in wardrobe, catering to a variety of lifestyle needs.

Throughout the property, large windows create a bright and inviting atmosphere, while the layout offers excellent potential for reconfiguration or further enhancement. Additional features include a detached garage, providing secure storage or workshop space, and ample off-street parking for multiple vehicles.

This property represents a rare opportunity to acquire a substantial bungalow in a prime residential area, blending generous living space with outstanding local amenities and transport links. Whether you are upsizing, downsizing, or searching for a family home in a prestigious location, this versatile bungalow is sure to impress and offers a blank canvas for you to create your perfect home. Early viewing is highly recommended to fully appreciate the scope, space, and potential that this exceptional property has to offer.

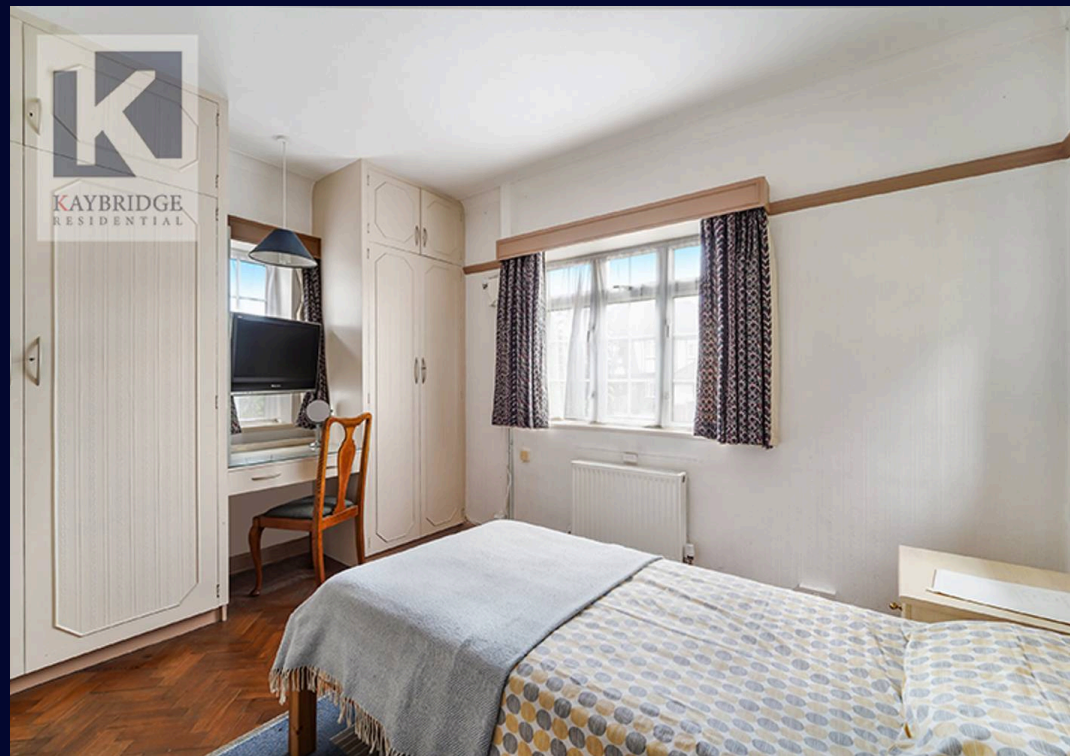
Council Tax band: F

Tenure: Freehold

EPC Energy Efficiency Rating: C

EPC Environmental Impact Rating: D





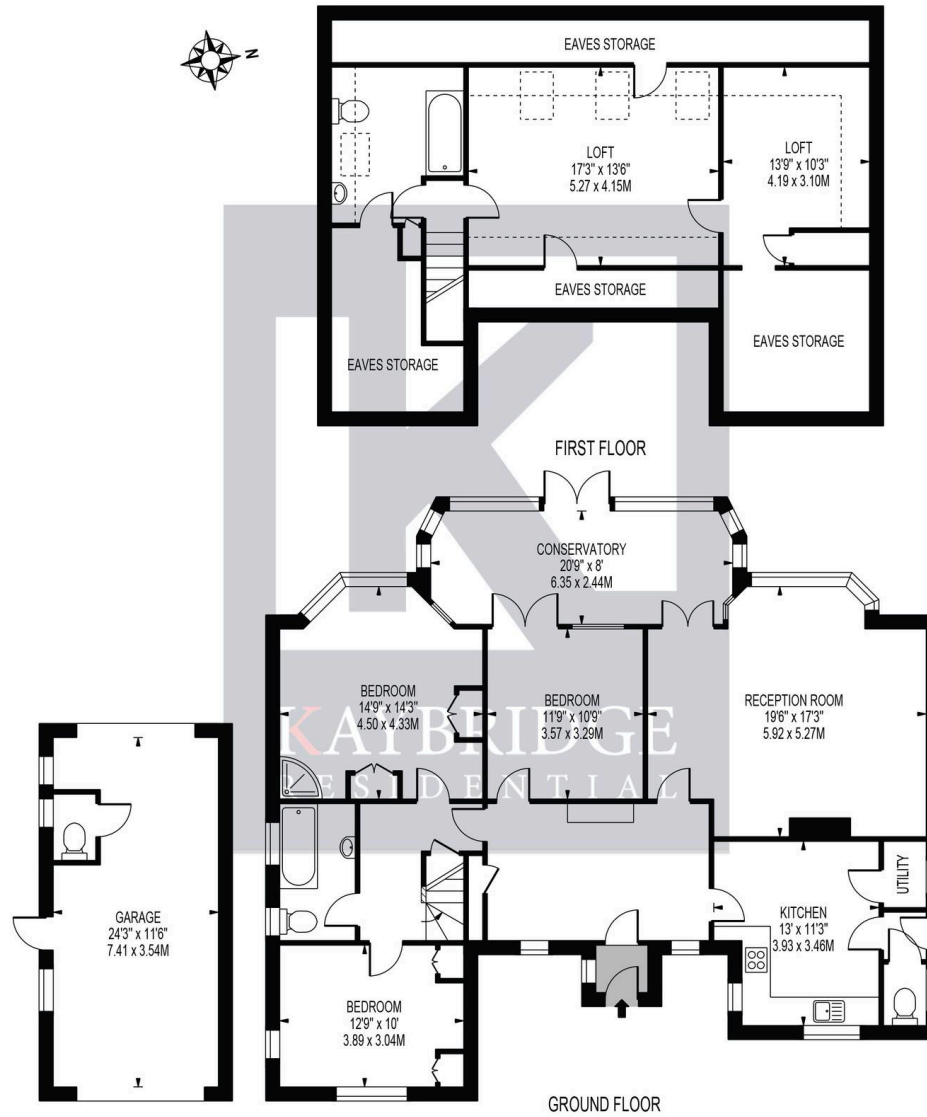
KINGSMEAD AVENUE

APPROXIMATE GROSS INTERNAL FLOOR AREA: 2298 SQ FT - 213.52 SQ M

(INCLUDING EAVES STORAGE, RESTRICTED HEIGHT AREA & EXCLUDING GARAGE)

APPROXIMATE GROSS INTERNAL FLOOR AREA OF EAVES STORAGE & RESTRICTED HEIGHT: 448 SQ FT - 41.58 SQ M

APPROXIMATE GROSS INTERNAL FLOOR AREA OF GARAGE: 282 SQ FT - 26.23 SQ M



FOR ILLUSTRATION PURPOSES ONLY

THIS FLOOR PLAN SHOULD BE USED AS A GENERAL OUTLINE FOR GUIDANCE ONLY AND DOES NOT CONSTITUTE IN WHOLE OR IN PART AN OFFER OR CONTRACT. ANY INTENDING PURCHASER OR LESSEE SHOULD SATISFY THEMSELVES BY INSPECTION, SEARCHES, ENQUIRIES AND FULL SURVEY AS TO THE CORRECTNESS OF EACH STATEMENT. ANY AREAS, MEASUREMENTS OR DISTANCES QUOTED ARE APPROXIMATE AND SHOULD NOT BE USED TO VALUE A PROPERTY OR BE THE BASIS OF ANY SALE OR LET.



Kaybridge Residential Estate Agents

Kaybridge Residential Estate Agents, 23 Stoneleigh Broadway - KT17 2JE

02080040474 • info@kbridge.co.uk • www.kaybridgeresidential.co.uk/

The information contained in this brochure is provided for general guidance and marketing purposes only. While every effort has been made to ensure the accuracy of the details provided, Kaybridge Residential cannot guarantee that all information is correct, complete, or up-to-date. Property Details: The descriptions, floor plans, dimensions, and photographs are intended to give a general overview of the property and may not represent its precise condition or layout. Prospective buyers are advised to