



King Street, Covent Garden, WC2E  
*£750 pw*

> 1 Bedroom > 1 Bathroom > Furnished

**TAVISTOCKBOW**  
RESIDENTIAL



- › One double bedroom
- › One shower room
- › Open plan kitchen reception room
- › Vaulted ceilings
- › Exceptional specification
- › Furnished
- › Available early September
- › 4th floor (walk up)
- › Lovely views to the church gardens
- › 24 hour security office minutes from the apartment

This stunning one bedroom apartment is situated on the fourth floor of a beautiful period building on King Street, just off the Piazza in central Covent Garden. Fully furnished and refurbished to an exceptional standard with a luxurious feel throughout, both the main living area and bedroom feature vaulted ceilings giving a great sense of space, volume and plenty of natural light. The

bedroom overlooks the tranquil gardens of St Paul's Church and the open plan reception room looks on to Kings Street and the lovely Petersham Nurseries. Available early September on a furnished basis, 1 to 3 year contract, straight or with a minimum 6 months mutual break clause as negotiated.

Council tax band F.

King Street is one of Covent Garden's most sought after addresses and benefits from being fully pedestrianised for 20 hours a day. Multiple transport options are within easy reach, including Covent Garden (Piccadilly line – 49 minutes to Heathrow), Leicester Square (Piccadilly and Northern lines) and Charing Cross (National Rail, Northern and Bakerloo lines) stations.





Leading directly on to the Piazza and historic Market Building, the street plays host to a variety of luxury retail brands including Ralph Lauren, Sandro and Hackett, with others such as Apple, Glossier, Chanel and Dior in the immediate vicinity. A choice of coffee shops and delis can be found within a 100m radius of the flat, along with award winning restaurants such as Clos Maggiore, La Goccia, Oystermen, Sushi Samba and Frenchie. There are also 5 gyms within a 5 minute walk.

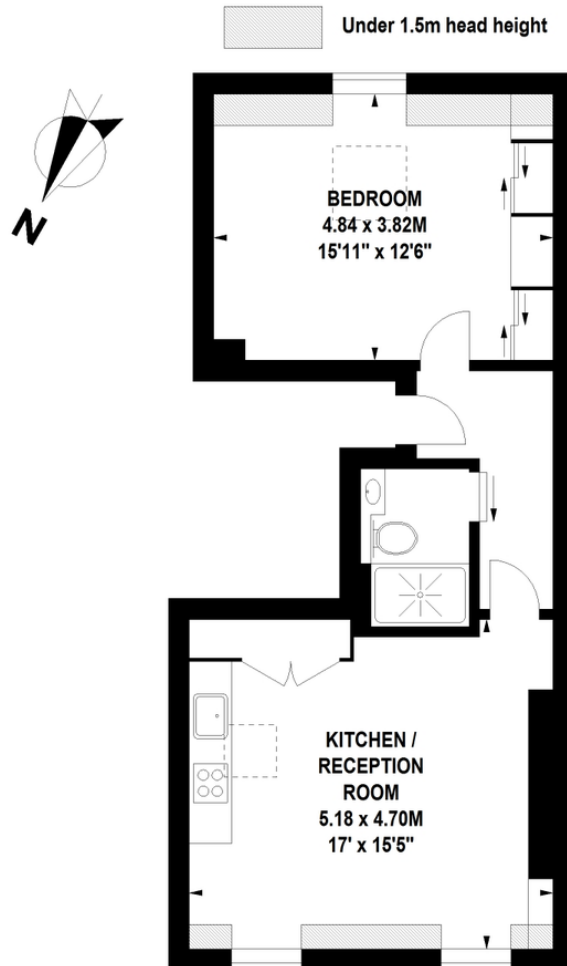
The Covent Garden Estate is a globally recognised destination situated in London's West End, within striking distance of Soho, Oxford Street and South Bank. Although in the heart of this vibrant part of central London, the Estate is pedestrianised for 20 hours a day, making it a clean, safe and inviting environment in which to live. Actively managed to a world class standard, all buildings on the Estate are maintained to the highest standard, both internally and externally, with particular care and attention given to the public realm and greening. This is all supported by an onsite team of cleaners, gardeners and 24 hour a day security, while the Estate facilities and property management teams are also based on site.

**WHAT WE LOVE:**

- Vaulted ceilings and a great sense of space
- Wonderful natural light
- Petersham Nurseries & Floral Court
- Legendary Burgers & Freakshakes at Maxwell's
- Views over St Pauls Church Gardens.

## King Street, WC2

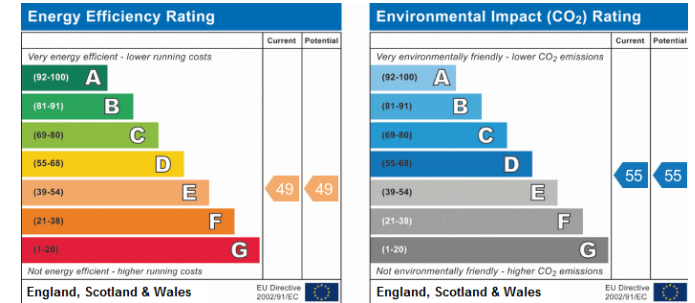
Approximate Gross Internal Area 52 sq m / 560 sq ft



Fourth Floor

Floor Plan produced for Tavistock Bow by Mays Floorplans © . Tel 020 3397 4594  
Illustration for identification purposes only, not to scale  
All measurements are maximum, and include wardrobes and window bays where applicable

## EPC



## About Us

Tavistock Bow is an independent residential agency based in Covent Garden. We are niche, boutique, creative, knowledgeable, professional and approachable. We love what we do and that's why we do it.

## Contact Us

- a.** 21 New Row, Covent Garden, WC2N 4LE
- t.** 020 7477 2177
- e.** hello@tavistockbow.com
- w.** tavistockbow.com

