



Offord Road, N1

£1,075,000

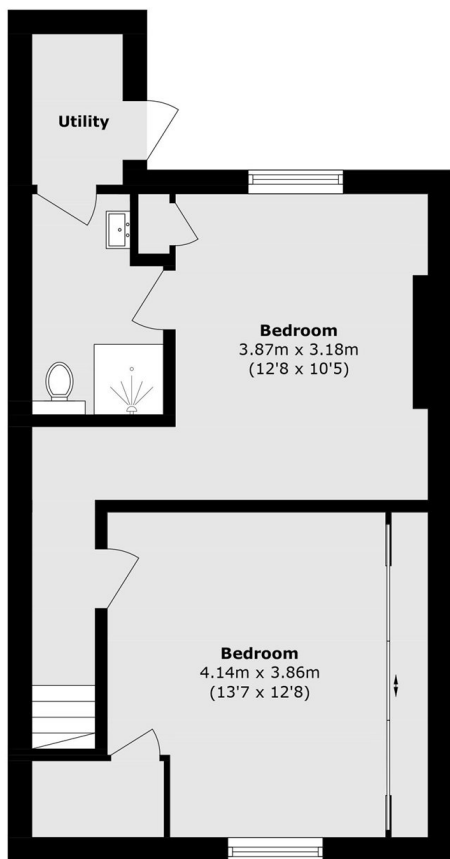
A two double bedroom, two bathroom period conversion with a private garden in the heart of Barnsbury. This split-level property has been recently refurbished throughout, benefits from an open-plan kitchen/living area.

Both Highbury & Islington and Caledonian Road & Barnsbury stations are less than half a mile away, providing access to the Victoria, overground and National Rail lines. The shops, bars and restaurants of Islington's Upper Street are also within easy reach.

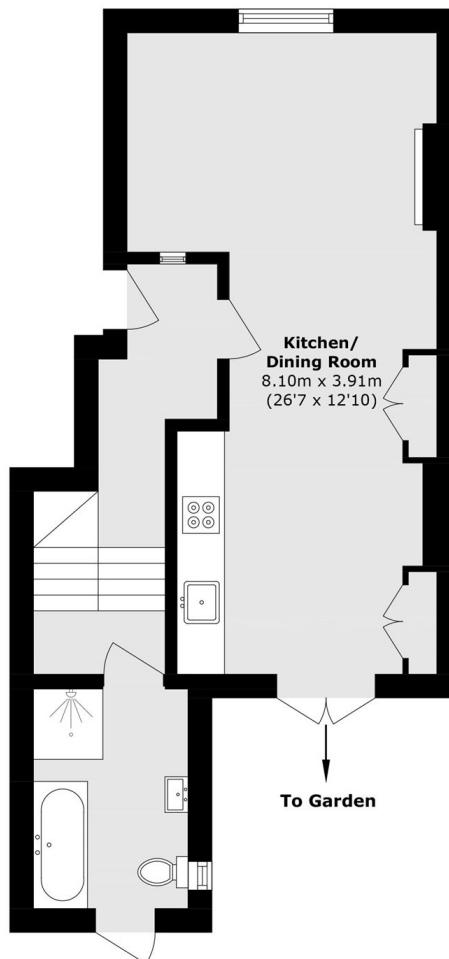
Features

- Share Of Freehold
- Two Double Bedrooms
- Two Bathrooms
- Open-Plan
- Split-Level
- Private Garden

Offord Road, London, N1



Lower Ground Floor



Ground Floor

Total area (approx.): 83.7 sq. m (900.9 sq. ft)