

**LONDON
VICTORIA
GROUPS** 



2 Cutter Lane

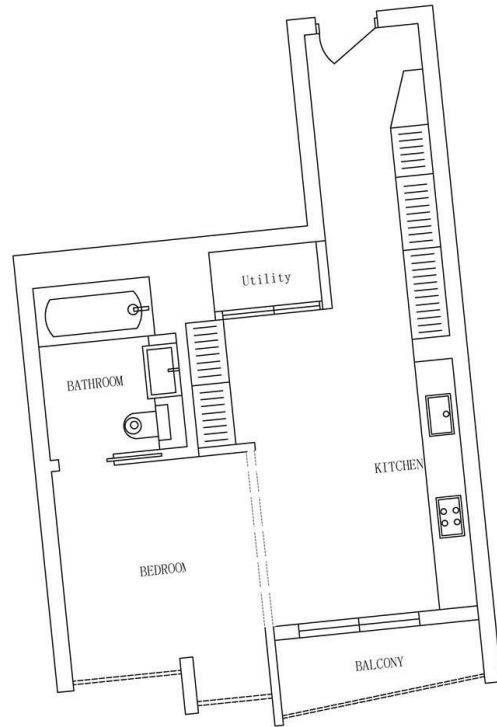
, London SE10 0ZT

- 24-hour concierge service
 - Indoor swimming pool
- Co-working and business spaces
 - Landscaped sky garden
 - EPC-B
- Fully equipped residents' gym
 - Private cinema room
 - Residents' lounge
 - North Greenwich
 - CTB-C

£2,200 Per Month



Local Authority **Greenwich**
Council Tax Band **C**
EPC Rating **B**



London Office Office
Spaces Victoria, 25 Wilton Road, Pimlico,
London, SW1V 1LW

Contact
020 3084 3094
XL@londonvictoriagroups.co.uk
www.londonvictoriagroups.co.uk

Agents Note: Whilst every care has been taken to prepare these particulars, they are for guidance purposes only. All measurements are approximate and for general guidance purposes only and whilst every care has been taken to ensure accuracy, they should not be relied upon and potential buyers/tenants are advised to recheck the measurements.