

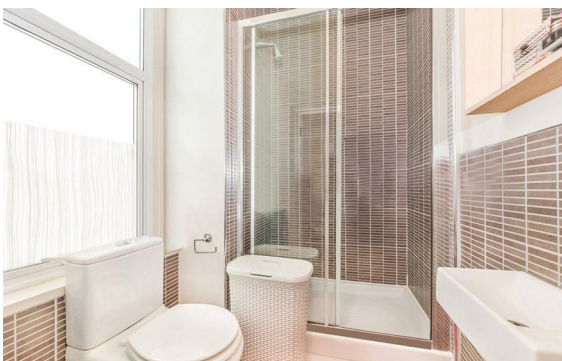
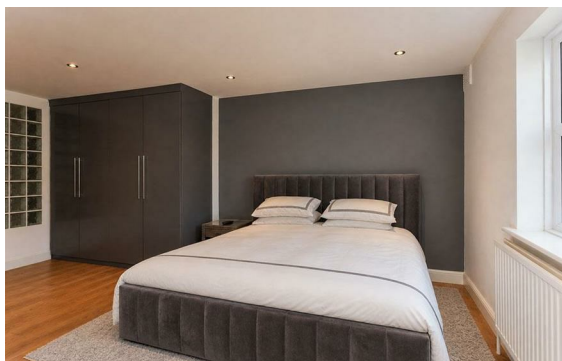


Harewood Avenue, Marylebone, London, NW1

Rent £1,000 Per Month

2 Bed | 2 Bath | 1 Reception

Please call us on 020 7724 2233 or email us info@newingtonstates.com to book a viewing.



A well-proportioned two-bedroom, two-bathroom apartment offering comfortable living space and a practical layout in a prime central London setting.

The property features a generous reception room, a separate fully fitted kitchen, and two well-sized bedrooms. The principal bedroom benefits from an en-suite bathroom, complemented by a second bathroom. Wooden flooring runs throughout, while a private balcony adds valuable outdoor space.

Ideally located in Marylebone, close to Marylebone Station and Baker Street Station, with Regent's Park and Marylebone High Street nearby.

EPC Rating: C

Energy Efficiency Rating: C

Agents Note: Whilst every care has been taken to prepare these particulars, they are for guidance purposes only. All measurements are approximate and are for general guidance purposes only and whilst every care has been taken to ensure their accuracy, they should not be relied upon and potential buyers/tenants are advised to recheck the measurements.

NEWINGTON
— ESTATES —

60 Upper Montagu Street

London

W1H 1SN

020 7724 2233

info@newingtonstates.com

<http://www.newingtonstates.com>