

Exeter Road, NW2

£575,000

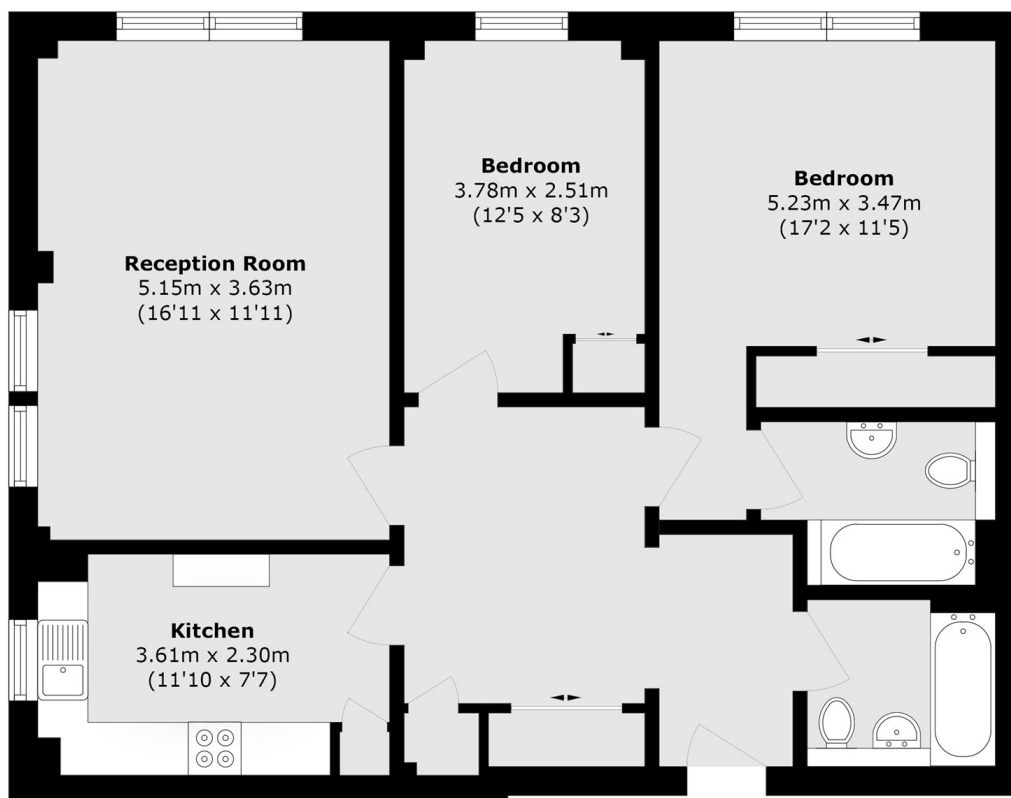
A bright and spacious two double bedroom, two bathroom apartment featuring a large reception room ideal for both relaxing and entertaining and a separate fully fitted kitchen. Further benefits include a 24 hour porter, leisure facilities, a share of freehold and no onward chain.

Exeter Road has exceptional transport links, including Kilburn station, Brondesbury Overground and bus routes into central London. It is also close to Kilburn High Road with its boutique cafés, restaurants and local amenities.

Features

- Two Bedrooms
- Two Bathrooms
- Share Of Freehold
- Secure Underground Parking
- Fantastic Amenities
- Chain Free

Exeter Road,
London, NW2



Total area (approx.): 74.4 sq. m (800.8 sq. ft)