



**7, Buttermere Crescent, Rainford, WA11 7LL**

**£195,000**

*David  
Davies* **D** *Collection*



## 7, Buttermere Crescent, Rainford, WA11 71 1

- EPC: D
- Council Tax Band: B - St Helens
- Freehold
- No Onward Chain
- Semi Detached Property
- Two Reception Rooms
- First Floor Family Bathroom
- Two Spacious Bedrooms
- Private Driveway
- Well Maintained Front And Rear Gardens

We are delighted to bring to market this lovely two-bedroom semi-detached home located on Buttermere Crescent in the ever-popular area of Rainford Junction. Offered with 'No Onward Chain', this property presents a fantastic opportunity for a first-time buyer, downsizer, or investor alike.

The property is ideally positioned within walking distance of Rainford Junction Train Station, providing excellent commuter links, and is surrounded by local amenities, countryside walks, and highly regarded schools.

Internally, the accommodation has been well maintained throughout and offers great potential. The ground floor comprises an entrance porch, welcoming hallway, and a spacious living room through to dining area, perfect for relaxing or entertaining. To the rear is a generously sized modern kitchen which could easily be opened up to create a stunning open-plan kitchen diner, should the buyer wish to modernise further.

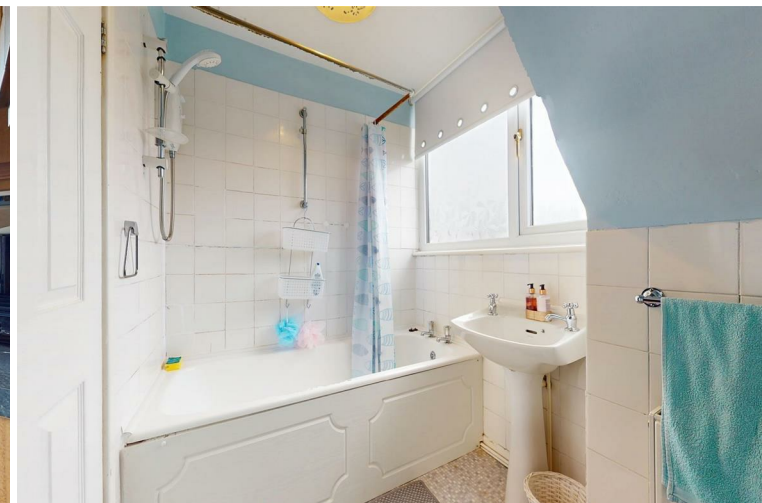
To the first floor are two well-proportioned bedrooms and a family bathroom.

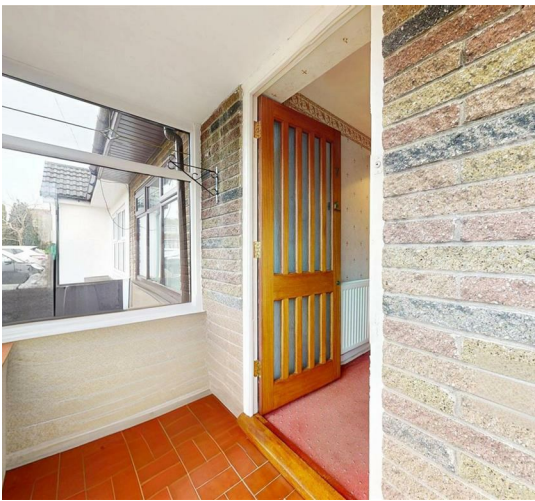
Externally, the property continues to impress with a driveway providing off-road parking for multiple vehicles and a detached garage. To the rear is a lovely, low-maintenance garden featuring flagged patio areas ideal for outdoor seating and a section of lawn adding greenery and charm.

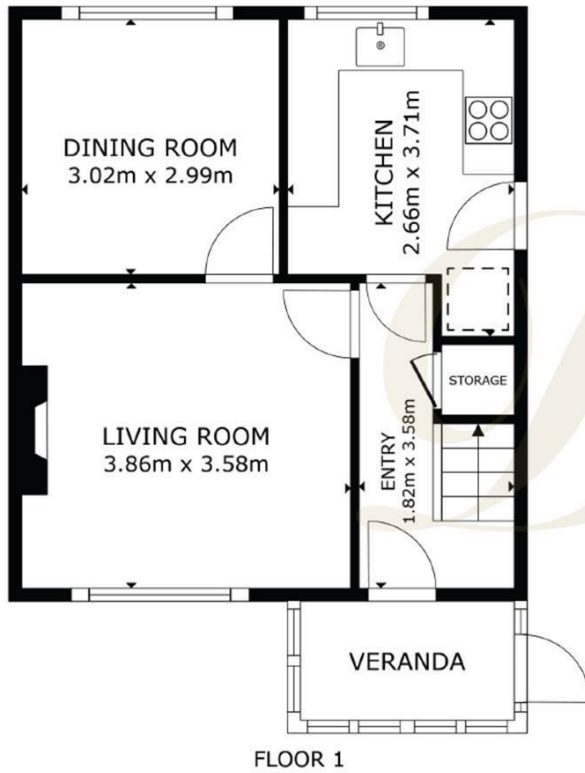
This is a property that offers great potential in a fantastic location, ready for someone to move in and make their own.

- \* Non Standard Construction Steel Frame \*
- \* Probate Has Been Granted\*

EPC: D







**David Davies**

Our family owned Independent Estate Agency was established in 1981 and provides a **refreshingly professional service** combining traditional values with a modern approach.

*David Paul Davies*

You may download, store and use the material for your own personal use and research. You may not republish, retransmit, redistribute or otherwise make the material available to any party or make the same available on any website, online service or bulletin board of your own or of any other party or make the same available in hard copy or in any other media without the website owner's express prior written consent. The website owner's copyright must remain on all reproductions of material taken from this website.

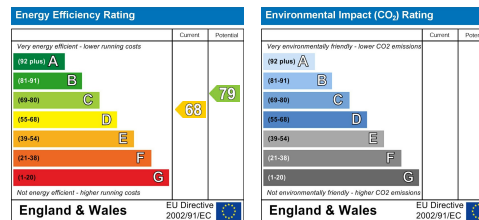
**ALLISONS**

For life's meaningful moments

A better **mortgage deal** made a good deal easier

Talk to our independent mortgage specialists on **01744 885555** or visit **allisonsfinancial.com**

Allisons Financial Planning Ltd is authorised and regulated by the Financial Conduct Authority.



Information on tenant permitted fee's can be accessed via the link below [www.daviddaviesestateagent.co.uk/tenant](http://www.daviddaviesestateagent.co.uk/tenant)

**22 Church Road, Rainford, St Helens, WA11 8HE**  
**T: 01744 885753**  
**sales@daviddaviesestateagent.co.uk**  
**lettings@daviddaviesestateagent.co.uk**  
**www.daviddaviesestateagent.co.uk**