



Sunnydale Road, SE12

£550,000

A well-presented three-bedroom mid-terrace home, ideally situated on the popular Courtlands Estate, enjoying attractive views over the park. The property offers a spacious reception room, a bright and well-appointed kitchen dinner, and the added benefit of a ground floor bathroom. To the rear, there is a private enclosed garden, perfect for relaxing, entertaining, or family use. Further benefits include a private garage. This home is ideal for families, offering three spacious bedrooms and conveniently located close to local amenities, transport connections, and nearby green open spaces.

Features

- Mid Terrace Home
- Three Bedrooms
- Two Bathrooms
- Spacious Lounge
- Garage
- Amazing Views Overlooking Sports fields

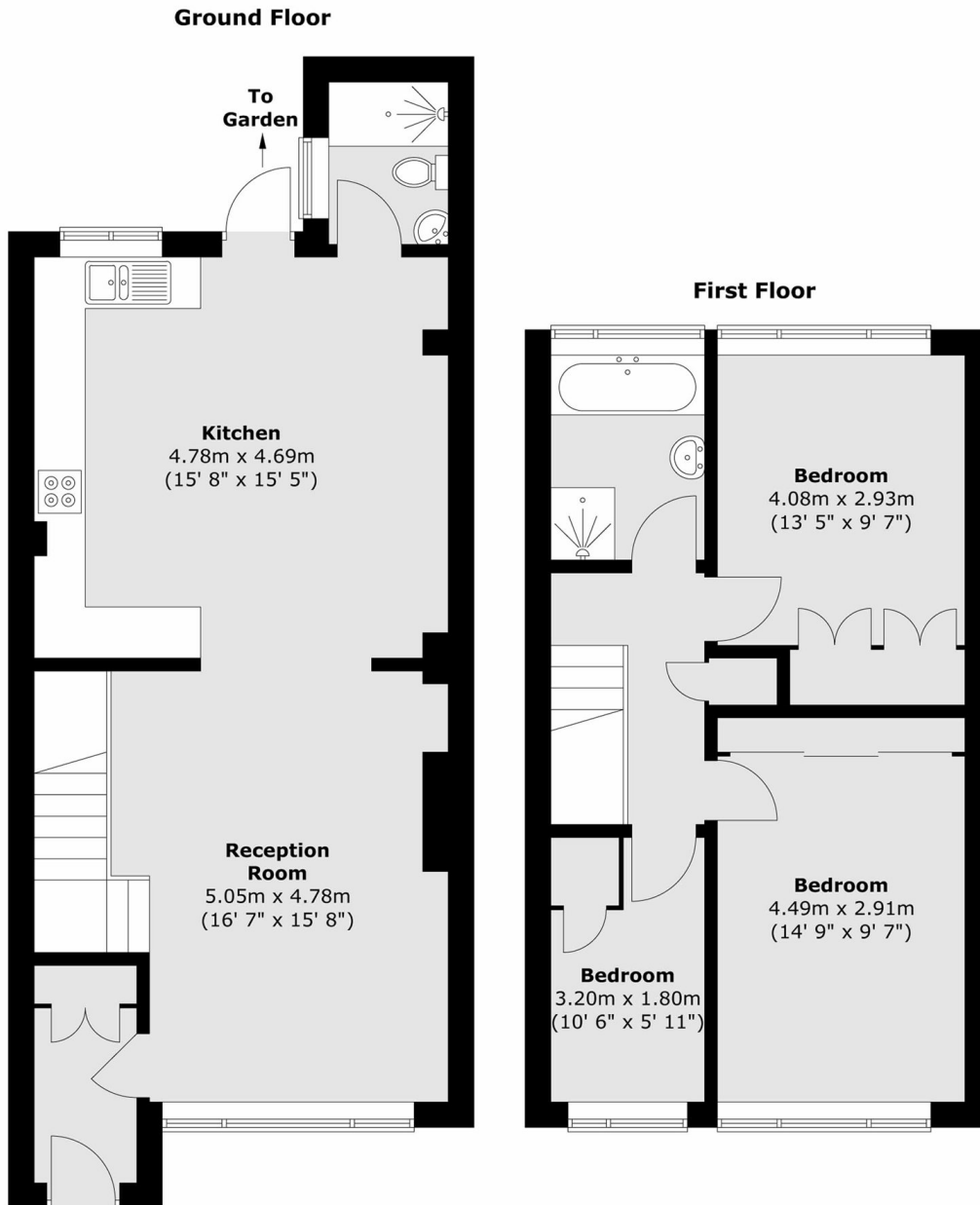


Sunnydale Road, SE12

Situated on the popular Courtlands development, Kidbrooke Village and train station are within half a mile, and Lee train station and Blackheath Village with its variety of cafes, restaurants and boutique shops are within a mile radius. Viewing highly recommended.



Sunnydale Road,
London, SE12



Total area (approx.) : 94.8 sq. m (1020 sq. ft)