



463 Lyveden Way

Corby, Northamptonshire NN18 8RU



Simpson West

Located in the popular Oakley Vale area, this deceptively spacious detached home offers generous accommodation throughout and is perfectly suited to family living. The property opens with a striking reception hall, giving access to a cloakroom/WC, a sizeable living room with patio doors opening to rear garden, a separate dining room and a well-equipped kitchen/breakfast room.

Upstairs, you will find four double bedrooms. The master bedroom benefits from its own en-suite and a dedicated dressing area fitted with space for wardrobes on both sides. A four piece family bathroom serves the remaining bedrooms. The enclosed rear garden is of a good size and mainly laid to lawn, complemented by a decked patio area and a selection of mature trees and greenery. At the front, a driveway provides off-road parking and leads to the garage. Energy Rating: C. Council Tax Band: E

£329,950



4

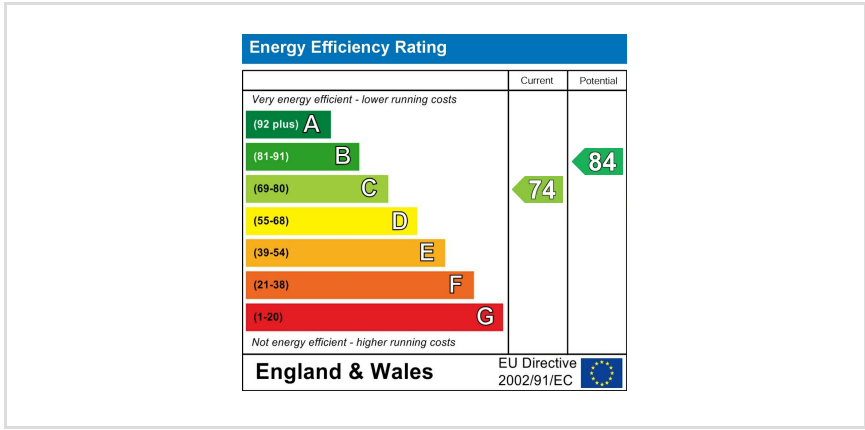
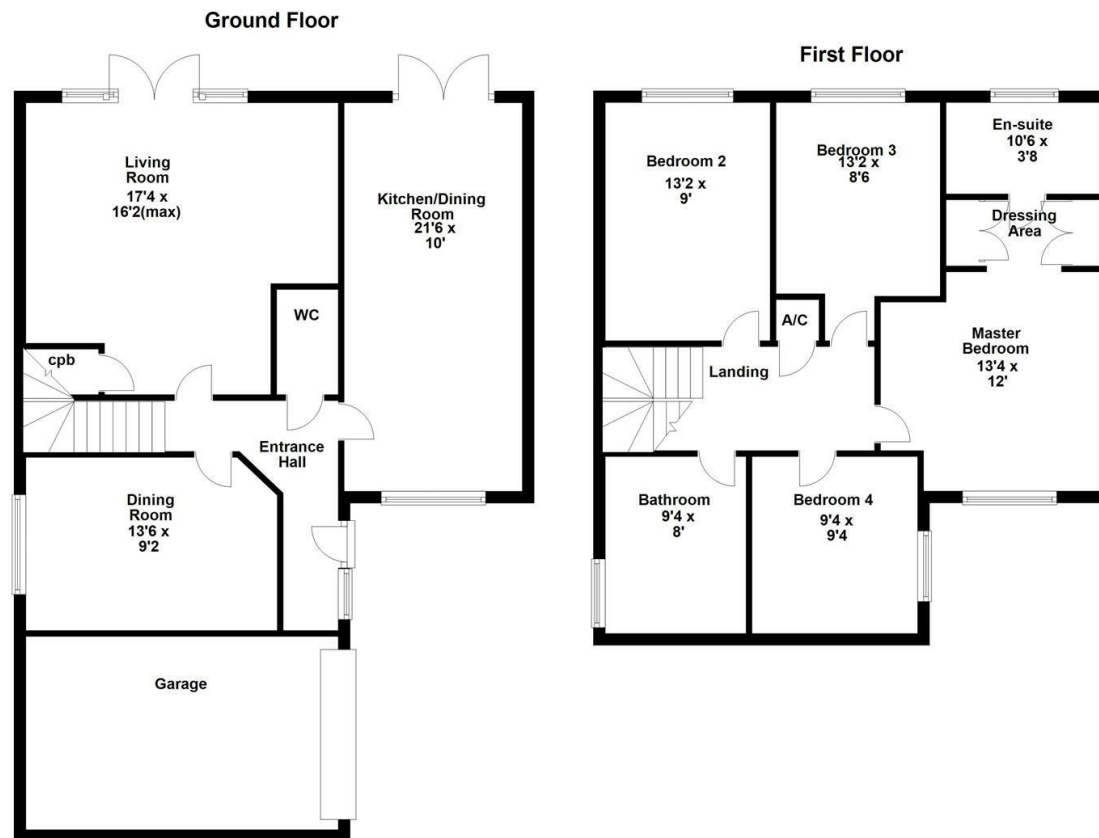


2



1





When you buy with Simpson West, you know **you'll be in safe hands**. From the moment you walk through our doors, we'll make you **feel truly welcome**. Our sales consultants and financial advisors will take you through **every step of the process**, offering **free expert advice** along the way, from help choosing the right mortgage and insurance through to finding your conveyancer. And if you need help selling your home too, **with over 20 years of local experience, you can trust us to get you moving**.



**Simpson
West**

Making Every
Journey Personal



01536 202007

info@simpsonwest.co.uk

<https://www.simpsonwest.co.uk/>

64 Corporation Street, Corby, Northants, NN17 1NH