



## Astwood Mews, SW7

£1,175,000

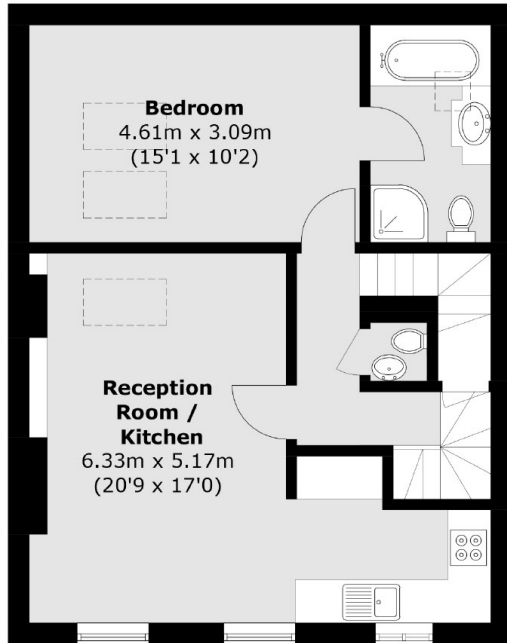
Well-proportioned throughout, this lovely two-bedroom maisonette offers generously sized rooms, a bright and spacious reception area, a modern and well-equipped kitchen, and a superb location. Perfectly suited for comfortable living and entertaining, the property combines contemporary features with a welcoming layout, further benefits are abundance of storage space throughout the property.

Located close to Gloucester Road making this the perfect opportunity for commuters with the property being a short walk away from the property.

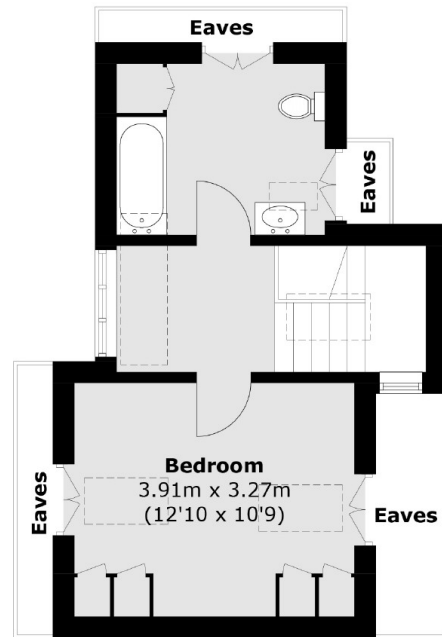
### Features

- Two Bedrooms
- Own Entrance
- Excellent Location
- 900+ Year Lease
- Low Maintenance Costs
- Cul-De-Sac Location

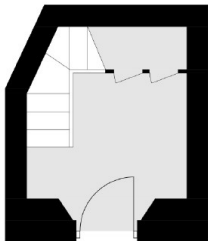
# Astwood Mews, London, SW7



**First Floor**



**Second Floor**



**Ground Floor**

Total area (approx.): 88.3 sq. m (950.4 sq. ft)  
(Excluding Eaves)