

OVER 60?

Secure this property
for up to **59% less!**



Guide Price

£800,000

Freehold

4x  3x  4x 

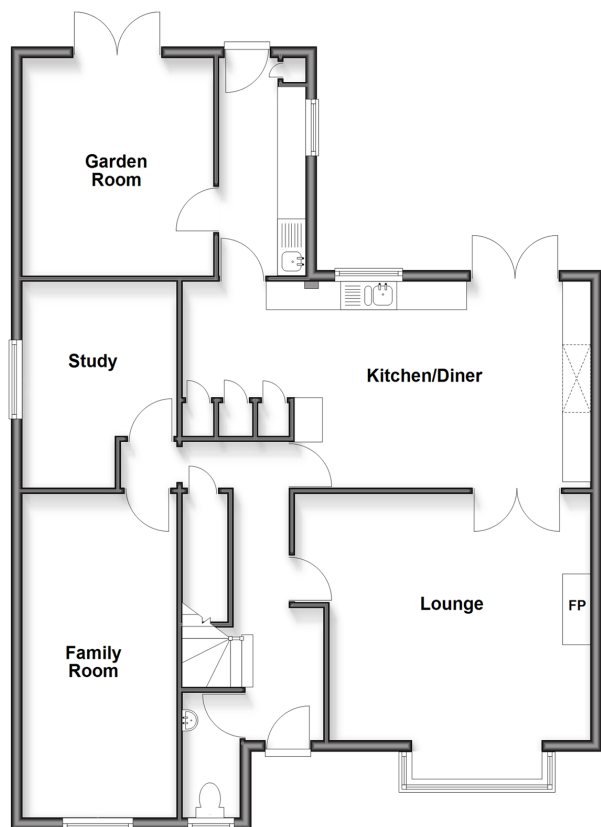
Cobblestones, Hempstead, Kent, ME7

Wards

Helping you move forwards

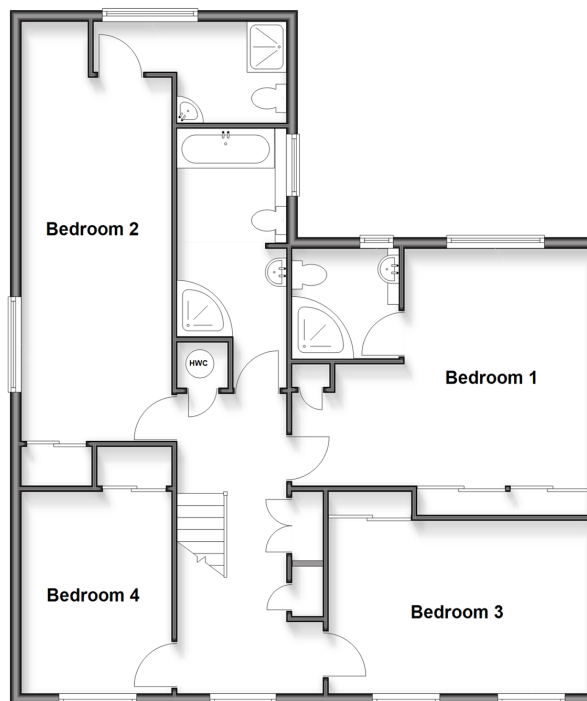
Ground Floor

Approx. 108.2 sq. metres (1164.7 sq. feet)



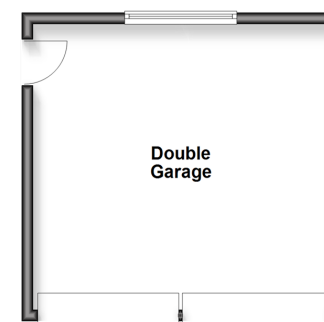
First Floor

Approx. 98.6 sq. metres (1061.5 sq. feet)



Outbuilding

Approx. 26.8 sq. metres (288.5 sq. feet)



Accommodation

GROUND FLOOR

Entrance Hall
Downstairs Cloakroom
Family Room : 16'9 x 8'9 (5.11m x 2.67m)
Study: 12'8 x 8'9 (3.86m x 2.67m)
Garden Room: 11'3 x 10'8 (3.43m x 3.25m)
Lounge : 17'1 x 13'8 (5.21m x 4.17m)
Kitchen/Diner: 26'3 x 12'4 (8.01m x 3.76m)
Utility Room: 8'9 x 5'6 (2.67m x 1.68m)

FIRST FLOOR

Landing
Bedroom 1 : 17'2 x 13'7 (5.24m x 4.14m)
En-Suite Shower Room
Bedroom 2 : 24'3 x 10'0 (7.40m x 3.05m)
En-Suite Shower Room
Bedroom 3 : 15'2 x 9'9 (4.63m x 2.97m)
Bedroom 4 : 16'2 x 9'2 (4.93m x 2.80m)
Bathroom

OUTBUILDING

Double Garage : 17'5 x 16'8 (5.31m x 5.08m)

OUTSIDE

Front Garden
Rear Garden
Driveway



Main features

- Outstanding Wards built family home
- Extended at first floor level
- Large double garage and extensive driveway
- Close to Hempstead Valley Shopping Centre
- No onward chain



Nearest Schools

Primary Schools: Hempstead Junior School, Fairview Community Primary, Deanwood Primary Education Technology School
Secondary Schools: Rainham School for Girls, The Howard School, Greenacre School, Rainham Mark Grammar



Transport Information

Train Stations: Rainham 2.2 miles, Gillingham 2.7 miles, Chatham 3.0 miles



Address

Cobblestones, Hempstead, Kent, ME7



Directions

For directions to this property please contact us.



Wards
Helping you move forwards

Call Rainham Branch 01634 373531 ■ wardsofkent.co.uk



■ If buying to rent, please check if Local Authority licensing schemes apply before proceeding

■ Through a Homewise Home For Life Plan people aged 60+ can secure this property for up to 59% less, by purchasing a Lifetime Lease

EPC RATING

CURRENT: D(65) POTENTIAL: C(74)

11300UCI/20260521/CW/GG