



**5 Dorset Green**  
Swindon

**£245,000**



## 5 Dorset Green

Swindon, Swindon

Well-proportioned three-bedroom terraced home with dining room, spacious lounge, fitted kitchen, family bathroom, front and rear gardens. Great scope to modernise. Popular North Swindon location.

Council Tax band: TBD

EPC Energy Efficiency Rating: C

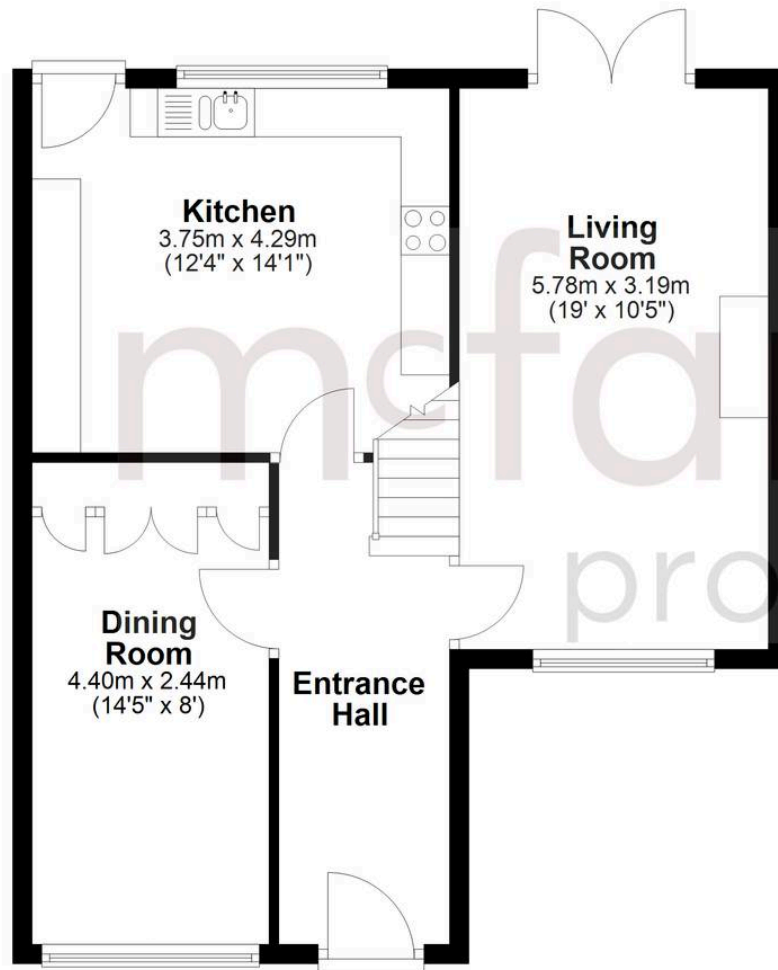
EPC Environmental Impact Rating: D

- Three-bedroom terraced house
- Separate living room with fireplace and French doors
- Fitted kitchen with ample storage
- Enclosed rear garden with patio and lawn
- Front garden with pathway access
- Popular residential location in North Swindon
- Excellent scope to modernise and add value



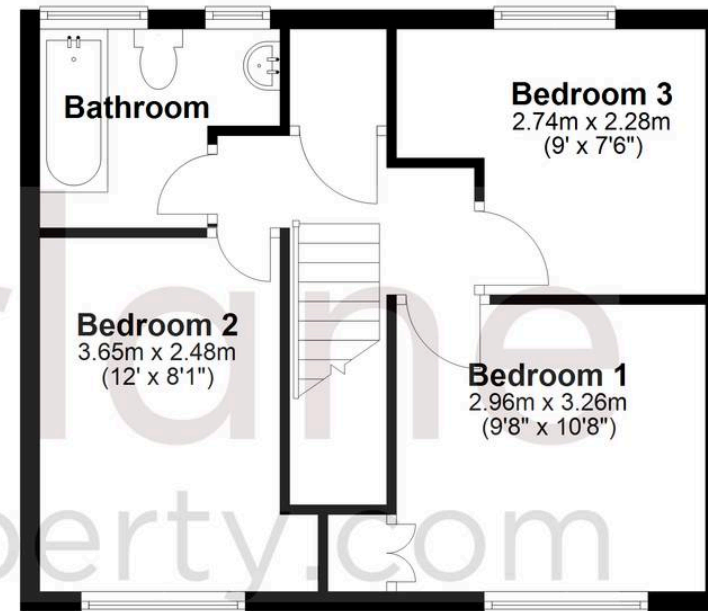
## Ground Floor

Approx. 56.9 sq. metres (612.1 sq. feet)



## First Floor

Approx. 39.7 sq. metres (427.0 sq. feet)



Total area: approx. 96.5 sq. metres (1039.1 sq. feet)

## McFarlane Sales & Lettings

North Swindon, Redhouse Village Centre, Swindon - SN25 2FW

01793 296600 • [swindon@mcfarlaneproperty.com](mailto:swindon@mcfarlaneproperty.com) • [www.mcfarlaneproperty.com/](http://www.mcfarlaneproperty.com/)