

28 Cyclamen Close, Branston, DE14 3FJ

£945 PCM







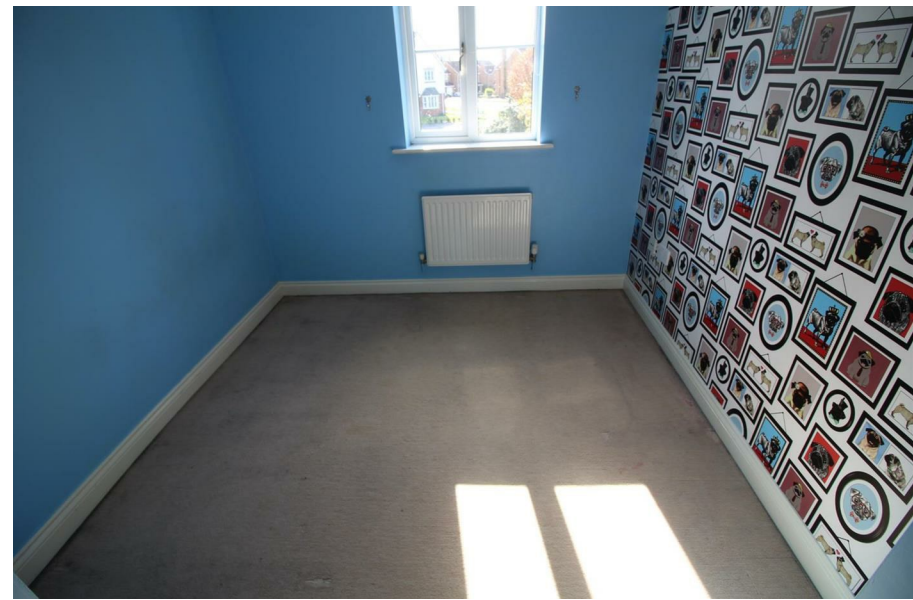
ABODE are delighted to present this attractive three-bedroom semi-detached home, situated in the highly sought-after village of Branston. The property offers two generous double bedrooms along with a well-proportioned single bedroom, making it ideal for families or professionals alike.

The accommodation features a spacious living area with access to the rear of the property, providing a bright and welcoming space for relaxation and entertaining. The kitchen is positioned to the front aspect, offering a practical and well-laid-out cooking area.

Additional benefits include allocated parking to the front of the property.





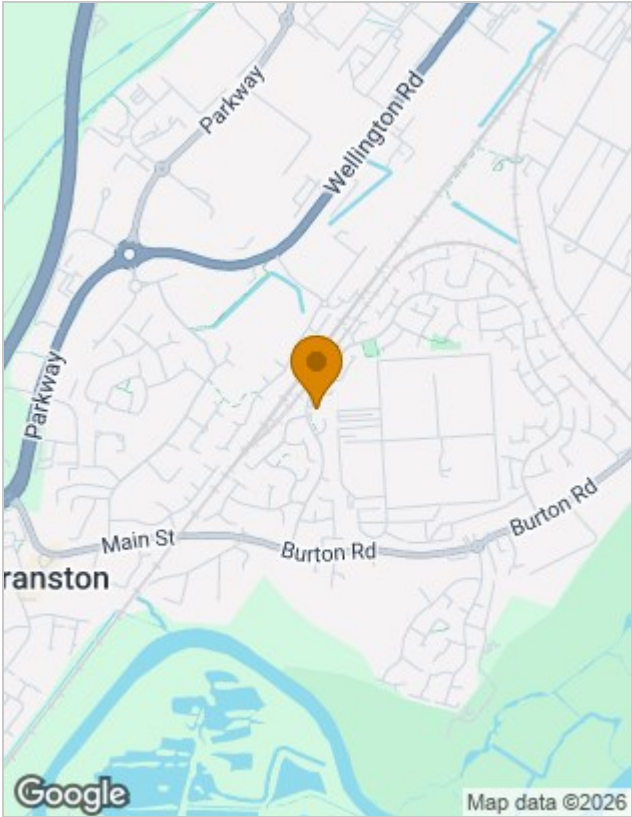




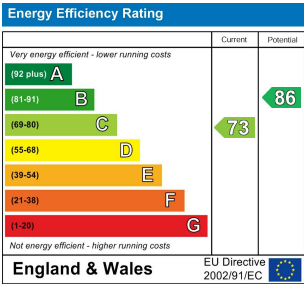
Floor Plans



Location Map



Energy Performance Graph



Please contact our Burton Lettings Office on 01283 845888 if you wish to arrange a viewing appointment for this property or require further information.

The particulars are set out as a general outline only for the guidance of intended purchasers or lessees, and do not constitute, any part of a contract. Nothing in these particulars shall be deemed to be a statement that the property is in good structural condition or otherwise nor that any of the services, appliances, equipment or facilities are in good working order. Purchasers should satisfy themselves of this prior to purchasing.