



**Main Street, Scarborough**

, YO11 3UD

**By Auction £690,000**



6



5



3



E

**HUNTERS<sup>®</sup>**  
EXCLUSIVE

# Main Street, Scarborough

## DESCRIPTION

END DATE: 4TH JUNE

This property is for sale by the Modern Method of Auction, meaning the buyer and seller are to Complete within 56 days (the "Reservation Period"). Interested parties personal data will be shared with the Auctioneer (iamsold).

If considering buying with a mortgage, inspect and consider the property carefully with your lender before bidding.

A Buyer Information Pack is provided. The winning bidder will pay £349.00 including VAT for this pack which you must view before bidding.

The buyer signs a Reservation Agreement and makes payment of a non-refundable Reservation Fee of 4.5% of the purchase price including VAT, subject to a minimum of £6,600.00 including VAT. This is paid to reserve the property to the buyer during the Reservation Period and is paid in addition to the purchase price. This is considered within calculations for Stamp Duty Land Tax.

Services may be recommended by the Agent or Auctioneer in which they will receive payment from the service provider if the service is taken. Any payment that will be received by the Agent or Auctioneer will be confirmed to you in writing before services are taken. Services are optional.

Mellin is an impressive detached residence set within a generous private plot on the outskirts of the sought-after village of Flixton. Offering versatile accommodation with four to six bedrooms, this substantial home is ideal for multi-generational living or home working. The property features spacious reception rooms, a large kitchen/diner, conservatory, snooker room, and a superb leisure suite with heated indoor swimming pool, gym area, and integral garage access. Externally, there is gated parking, mature gardens, and a detached two-bedroom log cabin with its own kitchen, bathroom, driveway, and private garden. Positioned between Filey and Scarborough, Flixton offers a peaceful village setting surrounded by countryside while remaining close to local amenities and transport links. Internal viewing is highly recommended.





**HUNTERS**<sup>®</sup>  
EXCLUSIVE



**HUNTERS**<sup>®</sup>  
EXCLUSIVE



**HUNTERS**<sup>®</sup>  
EXCLUSIVE



**HUNTERS**<sup>®</sup>  
EXCLUSIVE

**HUNTERS**<sup>®</sup>  
EXCLUSIVE



This floor plan is for illustrative purposes only. It is not drawn to scale. Any measurements, floor areas (including any total floor area), openings and orientations are approximate. No details are guaranteed, they cannot be relied upon for any purpose and do not form any part of any agreement. No liability is taken for any error, omission or misstatement. A party must rely upon its own inspection(s). Powered by [www.Propertybox.io](http://www.Propertybox.io)



HUNTERS<sup>®</sup>  
EXCLUSIVE



## ENERGY PERFORMANCE CERTIFICATE

Energy Efficiency Rating		
	Current	Potential
<i>Very energy efficient - lower running costs</i>		
(92 plus) <b>A</b>		
(81-91) <b>B</b>		
(69-80) <b>C</b>		<b>77</b>
(55-68) <b>D</b>		
(39-54) <b>E</b>	<b>46</b>	
(21-38) <b>F</b>		
(1-20) <b>G</b>		
<i>Not energy efficient - higher running costs</i>		
<b>England &amp; Wales</b>	EU Directive	

### Thinking of Selling?

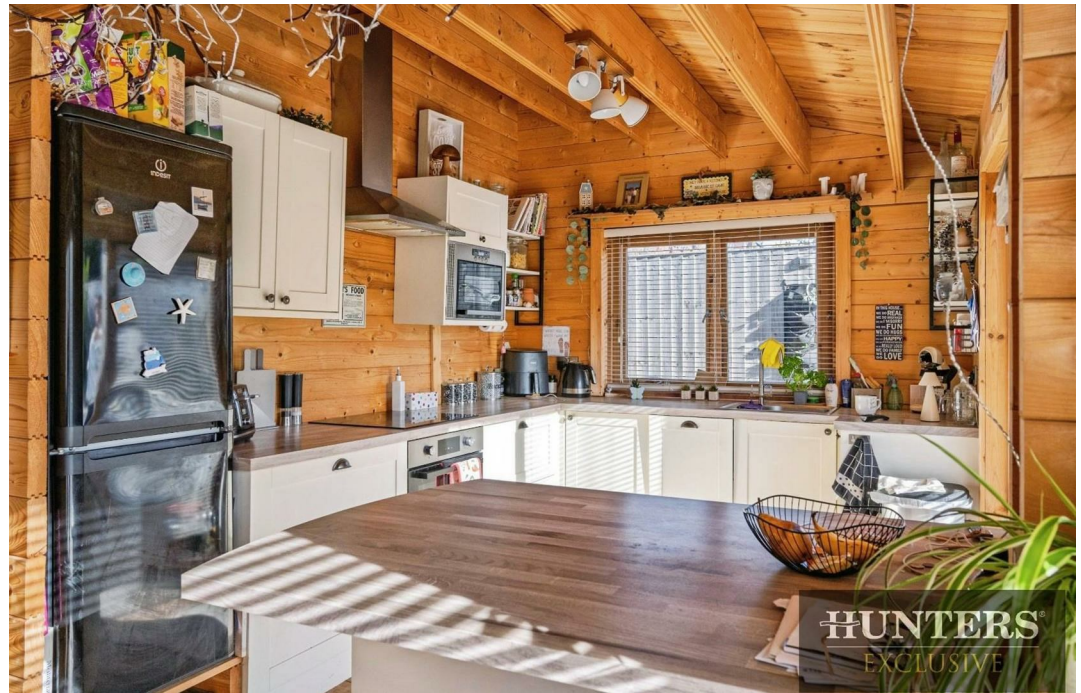
If you are thinking of selling your home or just curious to discover the value of your property, Hunters would be pleased to provide free, no obligation sales and marketing advice. Even if your home is outside the area covered by our local offices we can arrange a Market Appraisal through our national network of Hunters estate agents.

**33 Huntriss Row, Scarborough, YO11 2ED | 01723 336760 | [scarborough@hunters.com](mailto:scarborough@hunters.com)**





HUNTERS<sup>®</sup>  
EXCLUSIVE



HUNTERS<sup>®</sup>  
EXCLUSIVE



HUNTERS<sup>®</sup>  
EXCLUSIVE



HUNTERS<sup>®</sup>  
EXCLUSIVE

HUNTERS<sup>®</sup>  
EXCLUSIVE

