



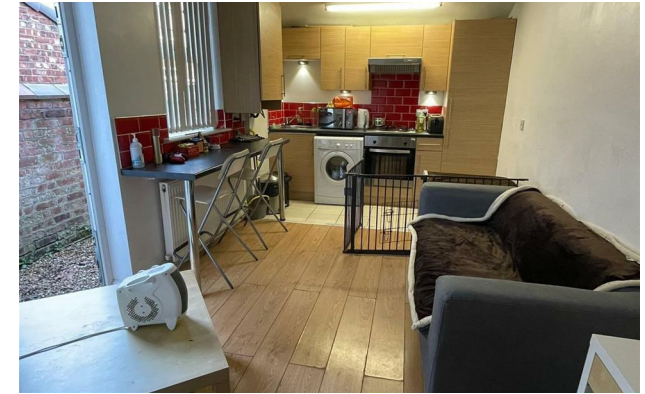
jordan fishwick

MANCHESTER
Platt Lane



Platt Lane, Manchester, M14 5WH

£1,200 Per Calendar Month



The Property

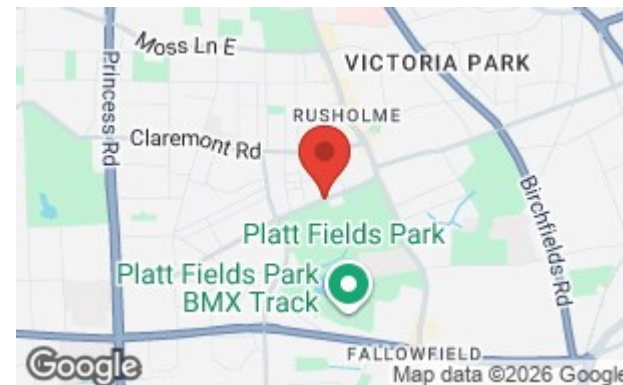
*** AVAILABLE NOW *** INTERNET INCLUDED *** ADDITIONAL BILLS PACKAGE AVAILABLE *** We have a beautifully presented student property in the heart of Fallowfield. Boasting two double bedrooms, bathroom and a separate second WC. Including high speed Internet. The property is a stones throw away from Platt Lane Sports Complex and Wilmslow Road. This Victorian terrace has been converted in to two self contained flats and this one has undergone some small refurbishments in recent years. The property is fully furnished and available to view now! Additional bills package available to include electricity, gas & water, however are capped at a rate per annum.

View our Virtual Tour Here - <https://youtu.be/sAnUMcc8DC0>

EPC Rating - C / Council Tax Band A

Directions

M14 5WH



- Available Now
- Two Double Bedrooms
- Bathroom & WC
- Recently Refurbished
- Internet Included in Rent
- Additional Bills Package, Capper Annually
- Fantastic Location
- Yard
- Council Tax Band A
- EPC Rating D

Postcode - M14 5WH

EPC Rating - D

Floor Area - sq ft

Local Authority - Manchester

Council Tax - A





These particulars are believed to be accurate but they are not guaranteed and do not form a contract. Neither Jordan Fishwick nor the vendor or lessor accept any responsibility in respect of these particulars, which are not intended to be statements or representations of fact and any intending purchaser or lessee must satisfy himself by inspection or otherwise as to the correctness of each of the statements contained in these particulars. Any floorplans on this brochure are for illustrative purposes only and are not necessarily to scale.

Offices also at: Wilmslow, Macclesfield, Hale, Sale, Chorlton, Glossop, Manchester & Salford

757-759 Wilmslow Road, Didsbury Village, Manchester

0161 445 4480

didsbury@jordanfishwick.co.uk
www.jordanfishwick.co.uk