



Chapel Hill, West Grimstead, Salisbury



A characterful and well-presented 2 bedroom semi-detached period cottage, set within a peaceful rural village.

The Property

Rose Cottage is a tastefully fitted semi-detached cottage offering a wealth of character and charm. The entrance hall opens into a sizable living/reception area, providing a welcoming and comfortable space. This leads into the kitchen which comes equipped with an electric oven, undercounter fridge and fitted cupboards.

The first floor comprises two comfortably sized bedrooms and a bathroom fitted with a shower over the bath. The main bedroom comes with a built-in wardrobe/walk-in storage, accompanied by further storage in the hallway and underneath the stairs.

Externally, the good-sized garden wraps around the house on three sides and is fully enclosed at the rear. There are two large storage rooms, one housing the gas boiler and plumbing for the washing machine. Accessed via a footpath from the end of the garden is a single garage with up & over door.

Rose Cottage, Chapel Hill, West Grimstead, Salisbury, SP5 3SG

Rent

£1,200 PCM



Features

- 2 bedroom semi-detached cottage
- Well presented
- Comfortable living/reception space
- Family bathroom with shower over
- Good sized garden
- Single garage
- Quiet village location

Tenancy & Restrictions

To be let on an Assured Periodic Tenancy, with a 12 month protected period, rolling monthly with requirement for a two month tenants' notice. No smokers.

EPC Rating

D (63)

Outgoings

Council Tax: Wiltshire £2,456.01 (2026/27) Band D

Size

669.00 sq ft

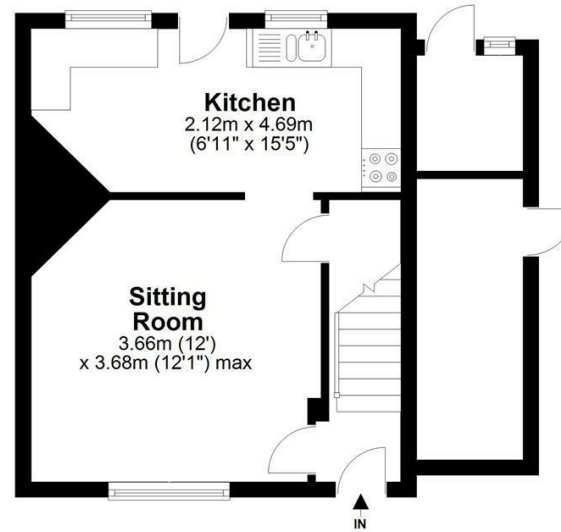
Location

West Grimstead is a quiet, sought-after village around 6 miles outside of the historic city of Salisbury, surrounded by woodland and open fields with great footpaths across the idyllic setting. The neighbouring village of Alderbury provides simple local amenities such as a convenience store, tennis club and a well-regarded primary school, and the short journey into the city of Salisbury boasts a fantastic range of shopping, leisure and educational facilities, as well as a mainline train station to London Waterloo (approximately 90 minutes).

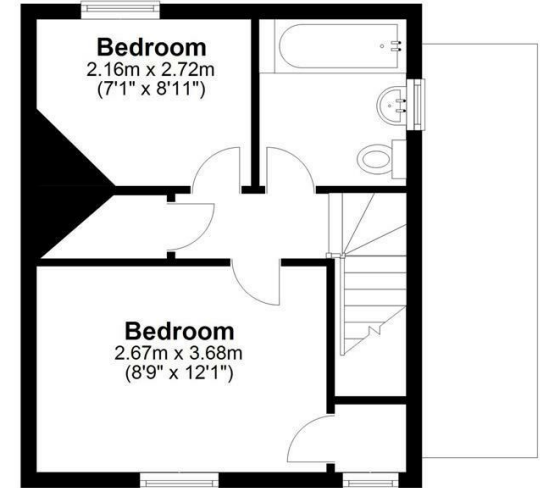




Ground Floor



First Floor



Total area: approx. 62.2 sq. metres (669.9 sq. feet)

FOR EXCLUSIVE USE BY MYDDELTON MAJOR ESTATE AGENTS
Plan for illustration only. Windows and doors are approximate. Whilst care is taken preparing this plan, please check details before making decisions reliant upon them. Measured and drawn to RICS guidelines
COPYRIGHT CLEARPLANZ

Disclaimer Notice Myddelton & Major and their clients give notice that:- i) they have no authority to make or give any representations or warranties in relation to the property, ii) these particulars do not form part of any offer or contract and must not be relied upon as statements or representations of fact. iii) any areas, measurements or distances are approximate. The text, photographs and plans are for guidance only and are not necessarily comprehensive. It should not be assumed that the property has all the necessary planning, Building Regulation or other consents, and any services, equipment or facilities have not been tested by the agent. iv) the purchaser must satisfy themselves by inspection or otherwise.