



Cottenham Park Road, SW20

£6,000 Per calendar month

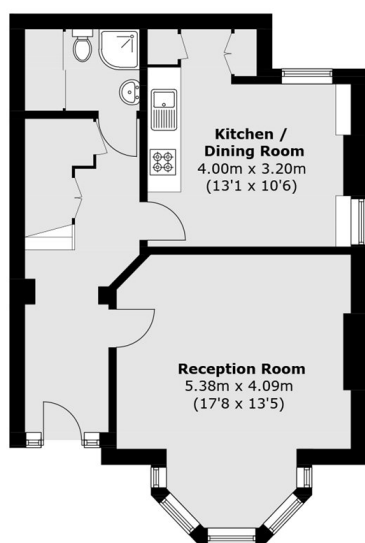
An exceptional newly refurbished five bedroom, five bathroom period home over three floors, located on the edge of Wimbledon Village. The property offers a dine-in kitchen along with private front garden.

Located on the edge of Wimbledon Village, within close proximity to Wimbledon Common and exceptional schools. Wimbledon Village has a host of boutique shops, delicious restaurants and a vibrant coffee culture.

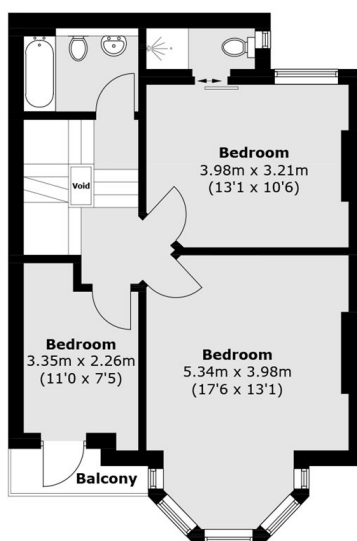
Features

- Five Bedrooms
- Five Bathroom
- Period Features
- Eat-In Kitchen
- Newly Refurbished
- Unfurnished

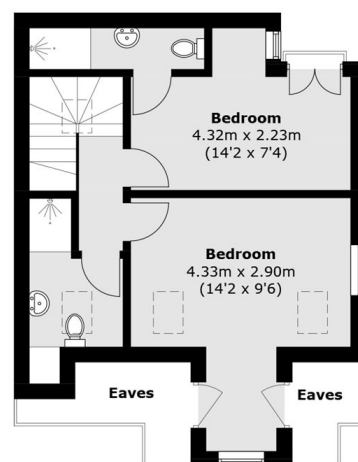
Cottenham Park Road, London, SW20



Ground Floor



First Floor



Second Floor

Total area (approx.): 149.4 sq. m (1,608.1 sq. ft)