



13 Fulmer Road, Sheffield, S11 8UF



13 Fulmer Road

Offers Around

£325,000

This absolutely stunning three bedroom terrace is a true gem, set in the ever popular and sought after Hunters Bar area. Immaculately presented throughout, the home offers bright, airy rooms and a stylish finish, perfect for first time buyers looking for a move in ready property on a quiet no through road, just moments from vibrant local amenities.

The property enjoys easy access to the lively Sharrow Vale and Ecclesall Road, renowned for their independent shops, cafés, bars and restaurants. You are also spoiled for choice when it comes to green space, with Endcliffe Park, Bingham Park and the Botanical Gardens all within close reach, ideal for weekend strolls, runs or picnics.

Inside, you are welcomed by a beautifully presented lounge with a charming gas log effect burner and bay window. The dining room flows effortlessly through French doors onto the garden, creating a wonderful indoor to outdoor feel. The fitted kitchen is a standout, complete with a Velux window that fills the space with natural light, a double oven, and continuous engineered oak flooring running through into the living room. A versatile basement room provides excellent additional space for storage and offers great potential, whether for hobbies, a home gym or conversion, as others on the street have done.

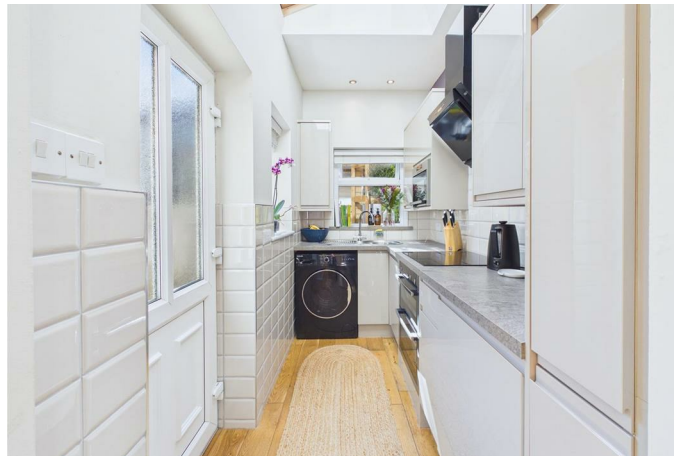
Upstairs, the first floor hosts two well proportioned bedrooms along with a modern family shower room. The impressive attic bedroom boasts a stunning Juliette style window with a frameless balustrade, flooding the room with light and offering lovely elevated views.

Outside, the delightful garden provides an inviting retreat with attractive planting and seating areas, along with the fantastic bonus of a garden room or office, perfect for remote working or creative projects.

A truly beautiful home in a prime location, early viewing is highly recommended.



- Stunning three bedroom terrace in the highly sought after Hunters Bar area
- Immaculately presented throughout with bright, airy rooms and stylish finishes
- Easy access to Sharrow Vale and Ecclesall Road with shops, cafés, bars and restaurants
- Close to Endcliffe Park, Bingham Park and the Botanical Gardens
- Summerhouse which could be used as a hobby space or home office. Complete with power and countertop
- Wonderful no through road location
- Versatile basement room offering excellent storage or conversion potential
- Roof redone in 2019
- Worcester boiler installed in November 2024 with 10-year guarantee







Floor -1 Building 1



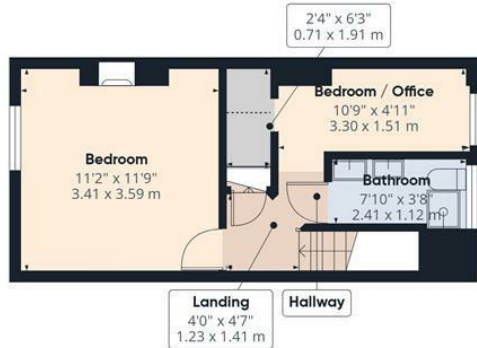
Ground Floor Building 1

Approximate total area⁽¹⁾

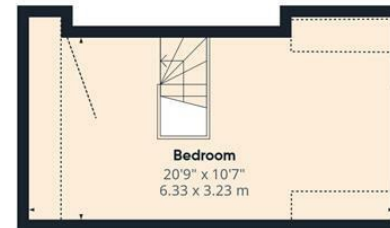
922 ft²
85.9 m²

Reduced headroom

47 ft²
4.4 m²



Floor 1 Building 1



Floor 2 Building 1

(1) Excluding balconies and terraces

Reduced headroom

..... Below 5 ft/1.5 m

Calculations reference the RICS IPMS 3C standard. Measurements are approximate and not to scale. This floor plan is intended for illustration only.

GIRAFFE360

While we endeavour to make our sales particulars fair, accurate and reliable, they are only a general guide to the property and, accordingly, if there is any point, which is of particular importance to you, please contact the relevant office. The Agents have not tested any apparatus, equipment, fittings or services and so cannot verify they are in working order. The buyer is advised to obtain verification. Please note all the measurement details are approximate and should not be relied upon as exact. All plans, floor plans and maps are for guidance purposes only and are not to scale. Under no circumstances should they be relied upon as exact or for use in planning carpets and other such fixtures, fittings or furnishings. YOUR HOME IS AT RISK IF YOU DO NOT KEEP UP REPAYMENTS ON A MORTGAGE OR OTHER LOAN SECURED ON IT. 'A Life Assurance policy may be requested.' 'Written Quotations of credit terms available on request.'

Banner Cross
T: 0114 268 3241
E: bannercross@saxtonmee.co.uk
www.saxtonmee.co.uk

Hathersage
T: 01433 650009
E: hathersage@saxtonmee.co.uk

Bakewell
T: 01629 815307
E: bakewell@saxtonmee.co.uk

Matlock
T: 01629 828250
E: matlock@saxtonmee.co.uk

