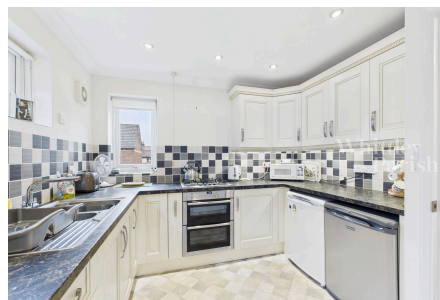


St Mary's Court, Diss, IP22 4DR

Guide Price £105,000 - £115,000

1 1 1



No onward chain - A well-presented one bedroom first floor flat with a stair lift in the popular retirement development of St Marys Court in Diss.

Key Features

- Guide Price £105,000 - £115,000
- Modern kitchen with Neff appliances
- Balcony from both lounge & bedroom
- Option to keep the stair lift
- Approximately 0.1 of a mile to the town centre Well-kept communal gardens
- Off road parking
- Leasehold
- Council Tax band A
- EPC Rating C

