



SOUL ESTATES

SALES & LETTINGS

TO LET - 2 BEDROOM HOUSE (PART-FURNISHED)

White Road, Smethwick, B67 7PQ

£1,100 PCM

Soul Estates are proud to present this well-presented 2-bedroom End-terraced house, part furnished to Let. This perfect family home is situated in a very popular area of Smethwick, with Outstanding and Good Ofsted rated schools situated close by. The house is close to Smethwick High Street, Devonshire Infant & Junior Academy, Holly Lodge High School, and Smethwick Galton Bridge Train Station.

The property offers an entrance porch with rooms going off to the spacious first reception room followed by the second reception, a kitchen, and a family bathroom to the rear. A family kitchen with a range of wall and base units to match, splashback tiling, and a gas hob and electric oven.

Stairs lead to the first-floor landing, leading to two good-sized double bedrooms. Bedrooms include beds, mattresses, and wardrobes. The property also benefits from gas central heating and double glazing, a low maintenance front and rear garden with ample on-street parking.

✓ **END-TERRACED FAMILY HOME**

✓ **PART-FURNISHED PROPERTY**

✓ **TWO GOOD SIZE BEDROOMS**

✓ **TWO RECEPTION ROOMS**









SOUL ESTATES

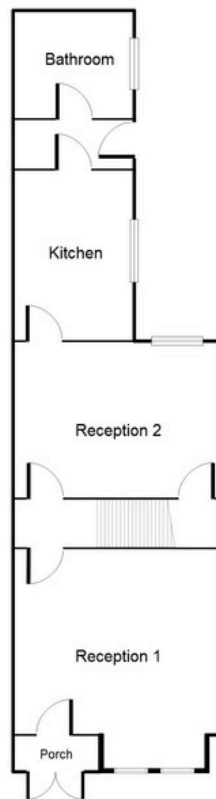
SALES & LETTINGS

TO LET - 2 BEDROOM HOUSE (PART-FURNISHED)

White Road, Smethwick, B67 7PQ

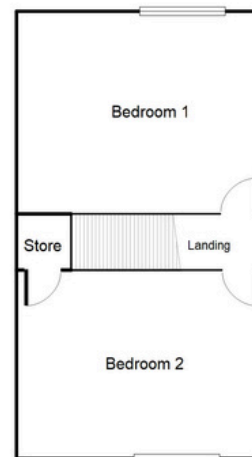
£1,100 PCM

Ground Floor



This floorplan is just an example, this is not to scale. Please see description for exact room sizes.
(c) Soul Estates

First Floor



This floorplan is just an example, this is not to scale. Please see description for exact room sizes.
(c) Soul Estates

Reception 1

11' 0" x 12' 1" (3.35m x 3.68m)

Reception 2

12' 3" x 12' 2" (3.73m x 3.71m)

Kitchen

9' 10" x 6' 9" (2.99m x 2.06m)

Bathroom

6' 3" x 6' 9" (1.90m x 2.06m)

Bedroom 1

12' 4" x 14' 2" (3.76m x 4.31m)

Bedroom 2

11' 1" x 14' 2" (3.38m x 4.31m)



SOUL ESTATES

SALES & LETTINGS

CONTACT US

Soul Estates
20 Great Bridge
Tipton
DY4 7HA

0121 647 6779

www.soulestates.co.uk

WWW.SOULESTATES.CO.UK | 0121 647 6779